

*Winter 2002*

# INSIDE ESF

*The magazine of the SUNY  
College of Environmental Science and Forestry*

*Honor Roll of Donors  
2000-2001*



Inside ESF is published four times each year for alumni and friends of the SUNY College of Environmental Science and Forestry.

SUNY-ESF  
1 Forestry Drive  
Syracuse, NY 13210-2778  
www.esf.edu

*President:*  
Cornelius B. Murphy, Jr.

*Vice President for Administration:*  
Connie S. Webb

*Editor:*  
Jeri Lynn Smith  
Director of News and Publications  
jls@esf.edu

*Graphic Designer:*  
Wendy P. Osborne  
News and Publications

*Photo Credits:*  
Pages 3 and 4, Wendy P. Osborne; pages 6, 7, 13 and 16, Dave Revette; page 12, Office of Student Life; page 19, Ranger School; and page 20, USGS Landsat 7 ETM+ image.

*Additional Assistance:*  
Kathleen A. Ciereck  
Cynthia A. Gamage

Office of News & Publications  
122 Bray Hall  
315-470-6644  
www.esf.edu/newspubs

## IN THIS ISSUE

### 4 CAMPUS PROFILE

Rick and Lonny Watro devised the best way to remember their fun-loving friend, John Clark.

### 5 CAMPUS UPDATE

ESF Now in 11 High Schools  
Fellowship Honors Michael Szwarc; Polymer Institute Renamed  
ESF Hosts CELA 2002

### 6 HONOR ROLL OF DONORS: JULY 1, 2000 TO JUNE 30, 2001

### ON THE COVER

Winter greetings from ESF, captured on the quad by Graphic Designer Wendy P. Osborne.

The State University of New York College of Environmental Science and Forestry offers a diverse range of accredited programs and degree options in chemistry, construction management and wood products engineering, environmental and forest biology, environmental resources and forest engineering, environmental studies, forest resources management, forest technology, landscape architecture, and paper science and engineering.

The College's mission is to be a world leader in instruction, research, and public service related to: understanding the structure and function of the world's ecosystems; developing, managing,

and using renewable natural resources; improving outdoor environments ranging from wilderness, to managed forests, to urban landscapes; and maintaining and enhancing biological diversity, environmental quality, and resource options. As such, ESF has maintained its unique status within 64-campus system as one of only five specialized colleges and one of only eight doctoral-granting institutions.

ESF takes affirmative action to provide equal opportunity for all people and to build a campus community that reflects a wealth of diversity.

*Printed on recycled paper.*



## These Words We Give to You

by Daniel J. Zuniga

*"The story goes that a farmer took some of his corn to the State Fair and won the blue ribbon, for the best corn. A reporter asked him what he was going to do with the prized ears of grain he was holding. He said that he would share the seed with his neighbors. The reporter was visibly surprised and asked, "Why would you want to do that?" The farmer calmly answered that his corn was only as good as his neighbors. "Why sir," said the farmer, "didn't you know? The wind picks up pollen from the ripening corn and swirls it from field to field. If my neighbors grow inferior corn, cross-pollination will steadily degrade the quality of my corn. If I am to grow good corn, I must help my neighbors grow good corn."*

*An excerpt from "Smile!"  
by Kevin Eikenberry*

I have been assigned a daunting task. In these few words I must convey the gratitude of 1,800 individuals whose lives have all been touched by the generosity of those listed in these pages. I don't have the right words to fully explain it, or the space in which to fully justify our thanks, but each student here owes more than we can repay. And each of us is aware of this reality. As I read the lists from previous years it occurred to me that these names are not just black print on a white page — they are people and organizations that have shared a lot, or a little, and helped shape the future of many students. I borrow words from a well-known author of fables, Aesop, in an attempt to conceptualize the contributions of those we wish to honor in this publication: "No act of kindness, no matter how small, is ever wasted." These words we give to you.

Each day is better because of the generosity of those who have helped me. I am a student, and so still learning, but there are certain truths I have already discovered. First, I owe everything to those who guide me, thank you Mom and Dad, and every teacher I have had. Second, when I am in special need, unexpected help is usually given by someone on whom I have no claim, thanks to all those listed herein. And third, you can obtain success when you believe in yourself, but you can harness greatness when others believe as well. ESF embodies this concept, and the students attempt to live it. We believe we can make a difference, our faculty and staff believe, and every person listed believes. But you acted on this belief, and that makes each one of you special. With your help we have obtained success, and because you believe, we will each of us strive to obtain greatness, for the betterment of our community and our Earth.

A friend of mine is the first recipient of the Whaley Scholarship. Heather Conway is now a sophomore chemistry major at ESF. Besides always being bright and friendly, Heather has contributed to our campus through volunteering. I had the privilege of being an orientation leader with Heather at the beginning of this past fall semester, and she is also a member of our recently reborn chemistry club. Heather's contributions have enriched our campus, and her presence is a direct result of the scholarship she receives. Heather is only one example of how the generosity of people like you has brought great students to our college. When I asked Heather if the scholarship had affected her attitude toward school, she replied, "I have always challenged myself, always thought I pushed myself harder than anyone else. After receiving the scholarship, I was proud of my accomplishments, and excited about the new challenges I would face in college. The idea that someone else wants to see me succeed has inspired me to work harder, so that I can live up to this honor."

*Zuniga, a junior chemistry major, is president of the Undergraduate Student Association.*

## Remembering John P. Clark

by Claire B. Dunn

Back in the early 1980s, a cadre of young engineers who were starting their careers at a paper mill in western Maryland spent long hours working in the mill together, and more long hours unwinding on their own time.

At the end of their work week, they headed to a tavern called Moran's, where they clowned around, munched on beer nuts, and developed their own, unique bonding rite.

"We had this strange ritual of ripping off shirt pockets," said Rick Watro, PSE '78. "I don't know why we did it. If you went in there on Friday night with a pocket on your shirt, you probably left without one. But you'd go home with somebody else's pocket."

Twenty years later, according to Bill Hoffman, PSE '82, that group of engineers is a little older and a bit more staid. "We don't get out and party like we used to," he said.

But they still constitute a tight-knit group of ESF alumni at the Westvaco Corporation mill in Luke, Md. And one of the cornerstones of their continuing friendship is the annual J.P. Clark Memorial Golf Tournament, held in honor of deceased ESF alumnus and Westvaco engineer John P. Clark.

Clark, who graduated from ESF in 1977, was killed in an accident at the mill Jan. 30, 1987. He died when a pulp storage tank collapsed as he was beneath it.

Clark had started work at the mill shortly after graduation as a project engineer. When he died at age 31, he was working as a bleached pulp production supervisor.

The John P. Clark Scholarship Fund was established immediately after his death. It provides tuition assistance for deserving students in the Faculty of Paper Science and Engineering, based on academic achievement and financial need.

In the 15 years since it was established, the scholarship fund has grown to more than \$320,000, said Brenda Greenfield, executive director of the ESF College Foundation Inc., which oversees the college's fund-raising efforts.

"The Clark scholarship has become an important means of attracting talented students to ESF," Greenfield said. "The tournament is a fund-raiser that enjoys unusually strong support each year, probably because John Clark was so well-liked, by both the people he met while he was a student at ESF and by his colleagues at Westvaco."

The 2001 tournament, held Oct. 6 at Cumberland Country Club in Cumberland, Md., raised approximately \$18,000 for the scholarship fund. The tournament's main organizers are Watro and his wife, Lonny.



Lonny and Rick Watro

"It's a personal means of keeping that individual in your thoughts," Rick Watro said. "I'm not saying I want to remember the accident. I want to remember the person."

Those who were close to Clark remember him as a sociable outdoorsman who worked hard and enjoyed his time off. "He was an easy-going, fun-loving type of person who could be serious at work, then leave and immediately enjoy life outside," Watro said. "Nothing seemed to bother him."

Clark lived alone in a house on Deep Creek Lake, in the far western corner of Maryland. It was a great place for boating and fishing, and Clark's home served as a gathering spot for his friends.

"His house was where we seemed to end up after being out on the weekends," Hoffman said. "Sometimes a bunch of us would end up spending the night there. Then we'd get up and be out on the lake the next day."

Hoffman and Watro remain part of the ESF contingent at Westvaco. Watro is superintendent of the pulp mill and power recovery operation; Hoffman is assistant pulp mill superintendent.

"There are quite a few of us at Westvaco who went to ESF because that's one of the schools we recruit from," Hoffman said.

The tournament typically draws up to 140 golfers. Sixty to 70 Westvaco employees usually participate, paying \$55 each. The company donates \$1.50 for each dollar paid by an employee. Vendors pay \$600 and may have two golfers participate.

"Rick and Lonny make it work. I give them all the credit in the world for what they've done," said Steve Dayton, a former Westvaco employee who was one of Clark's best friends.

"Rick does all the work," Hoffman said. "He really works the vendors hard as they visit through the year, encouraging them to participate. If it wasn't for Rick, it wouldn't happen."

## *ESF Now in 11 High Schools*

ESF's educational outreach program for high schools is expanding.

New agreements finalized this fall with the Syracuse City School District, the Beaver River Central Schools, the Liverpool School District and two Board of Cooperative Educational Services (BOCES) districts will bring the number of schools participating in the ESF in the High School program to more than 10.

The program allows qualified students to earn college credits for Global Environment or Writing and the Environment. These courses are taught by resident high school teachers mentored by ESF faculty.

DeRuyter, Skaneateles and Marcellus high schools have participated in a pilot program for the Global Environment course since 1999.

Onondaga-Cortland-Madison and Cayuga-Onondaga BOCES will offer the ESF courses as part of their "New Vision" Environmental Science programs. New Vision curriculums are interdisciplinary immersion programs on a central theme. Classes are held daily for up to four hours. OCM BOCES' New Vision will be taught on the ESF campus.

"We've been working hard to develop a continuing, collaborative relationship with all of our partner schools," said Dr. Richard E. Beal, ESF's educational outreach associate. In addition to training the

teachers, he said, the college has developed a mentoring committee that will continue to work with the individuals. The high school teachers also will be invited to participate in a number of faculty development activities on campus.

"We believe this is a dynamic cooperative effort that will benefit both the high schools and ESF," Beal said.

## *Fellowship Honors Michael Szwarc; Polymer Institute Renamed*

The family of Michael M. Szwarc has established a \$100,000 endowment to fund a graduate fellowship in physical chemistry.

Ralph Szwarc and his wife, Iris; Meira Penchina and her husband, Claude; and Rina Szwarc — the children of Michael and Marysia Szwarc — established the endowment in memory of their father, who died in August 2000. He was 91.

Szwarc taught at ESF for 27 years beginning in 1952 and established the college's Polymer Research Institute.

"Michael Szwarc was among the college's most distinguished scientists," said ESF President Cornelius B. Murphy, Jr. "We are grateful to have had him as part of this great institution. We also are tremendously thankful for his family's continuing interest in contributing to the betterment of our college."

Szwarc founded new fields of polymer science and made possible a host of new materials with indispensable applications in a broad array of industries today.

In recognition of his accomplishments, the ESF Board of Trustees voted to rename the Polymer Research Institute at its May 2001 meeting. The facility now is called the Michael M. Szwarc Polymer Research Institute at SUNY-ESF.

## *ESF Hosts CELA 2002*

ESF will host the national Council of Educators in Landscape Architecture conference Sept. 25-28.

The Faculty of Landscape Architecture is planning the conference, titled "Groundwork," expected to draw academics and landscape practitioners from throughout the U.S. to campus.

"We're really honored to be the hosts for this year's conference," said Richard S. Hawks, LA chair. "We're looking forward to some interesting presentations about the broad range of foundational activities being pursued in the field of landscape architecture."

Hawks also said he hoped landscape architecture alumni would take the opportunity presented by CELA to come back and visit campus.

Additional information may be found at the CELA conference Web site at <http://cela2002.esf.edu>.

## *Campus Profile continued*

Rick Watro, in turn, dishes off much of the credit to his wife. "I put her in charge of selling \$10 mulligans," he said, referring to the practice of selling golfers the opportunity to take a shot over again. "With 140 golfers in a tournament, you can generate quite a bit of money that way. Lonny does very well convincing people they need to spend that extra money."

The tournament, Watro and Hoffman said, is not about birdies and low handicaps.

"The tournament isn't designed for people to win awards," Watro said. "We don't have 140 real golfers. We have 140 participants. When they hit those shots off the tee, they go in every possible direction. In some cases, it's hard to find the best ball."

Said Hoffman: "I'm not a golfer. I don't even enjoy golf. I drive the beverage cart."

Dayton and Rick Watro were the winning team when the tournament celebrated its 10th anniversary.

Dayton graduated from Miami University in Ohio. After a few years with Westvaco, he took a job with Metso Paper. He is now the company's sales manager in the southeastern United States. He makes the trip from his home in Atlanta to the tournament in Maryland nearly every year.

"John was a very fun-loving person," Dayton said. "That guy was a boater, a fisherman, a snow skier, a jogger, a golfer, you name it. He liked outdoor activities. He worked so he could live. He worked so that he could go out and do the things he liked to do."

Dayton said Clark's love of the outdoors makes the tournament a fitting tribute. "We're doing what he would have done with his life: Go out and have fun."

## Honor Roll of Donors 2000-2001

ESF's honor roll of donors acknowledges all individuals and corporations who supported the college with a financial contribution during the period July 1, 2000, through June 30, 2001.

The honor roll recognizes contributions made to the ESF College Foundation, the Syracuse Pulp and Paper Foundation, the ESF Alumni Association and the Ranger School Alumni Association.

Contributors are listed in alphabetical order within various donor categories. These categories are: alumni, corporations, faculty and staff, foundations, friends, organizations, parents, and trustees and directors. Alumni additionally are listed by class year.

Within these broad groups, donors are further classified by giving level. These giving levels are:

|                  |                                    |
|------------------|------------------------------------|
| Founder's Club   | lifetime gifts of \$25,000 or more |
| President's Club | gifts of \$1,000 or more           |
| Leader           | gifts of \$500 to \$999            |
| Pacesetter       | gifts of \$250 to \$499            |
| Centurion        | gifts of \$100 to \$249            |
| Pioneer          | gifts of up to \$99                |

### Founder's Club

|                                      |                                     |                              |
|--------------------------------------|-------------------------------------|------------------------------|
| Maurice M. Alexander '40             | Richard H. '60 & Patricia Gustafson | Charles E. Pound '41         |
| Domenico Annese '41                  | William Harmon '50                  | Jerome Prigoff               |
| Anonymous                            | The Estate of Robert E. Hensel '48  | Alec C. Proskine '36         |
| Curtis H. Bauer '50                  | Morris Hirsch '38                   | Carl H. Rise '39*            |
| Cathrine C. Baxter                   | Edwin C. Jahn '25*                  | Robert M. Sand '50           |
| Olin D. '51 & Grace Bockes           | Yun J. Jen '51                      | Richard C. Saunders '50      |
| Frank Buholtz '47*                   | Dale & Vera Johnson                 | Harriet Schwarzer            |
| Gabriel F. '51 & Kay Buschle         | Alfred E. Komar '50                 | Walter A. Sherman '37        |
| Daniel & Nancy Cameron               | The Estate of Maurice Landberge '33 | John B. & Henrietta Simeone  |
| Ann Castagnozzi                      | George W. Lee '47                   | Raymond M. Smith '52         |
| Frederick W. & Zena Celke            | George W. Lee Jr.                   | Walter P. Smith '54          |
| Lee B. Chamberlaine '63*             | John D. & Candace Marsellus         | Elmer K. Stilbert '39        |
| Daniel P. Cooke '55                  | Marion W. Meyer                     | Virginia L. Townsend         |
| Carlton W. Dence '47                 | Edward K. Mullen '47                | M.J. Van Witsen              |
| Frances J. Farnsworth*               | Burton Perry III                    | Richard J. '78 & Lonny Watro |
| Richard D. Greenfield                |                                     | Louise Wendel                |
| The Estate of Joseph E. Gurvitch '36 |                                     | Chin S. Yang '84             |

\* Recently Deceased

Employer matching gifts are not included in the total of an individual's gift. Employers are listed separately along with other corporate donors.

Individual gift totals are cumulative for the year if more than one gift was made, regardless of the purpose of the gift. For example, an alumnus who made a gift of \$250 to the Annual Fund and another gift of \$250 to the Syracuse Pulp and Paper Foundation would be listed once in the "Leader" category.

Alumni Association annual dues are not included in this honor roll. Dues are not considered by the Internal Revenue Service to be tax deductible, in contrast to gifts to the Annual Fund or other charitable programs.

We have made every effort to ensure this list is comprehensive and accurate. Any errors of omission or fact should be reported in writing or by telephone at 315-470-6683.

Office of Development  
204 Bray Hall  
SUNY-ESF  
1 Forestry Drive  
Syracuse, NY 13210



### Academic Quality

The SUNY College of Environmental Science and Forestry was listed among the nation's top universities in *U.S. News and World Report's* 2002 rankings of America's best colleges released Sept. 6, 2001. The college was also ranked 39th on the list of top public national universities offering doctoral degrees and as 50th on the list of best value public and private national universities offering doctoral degrees.

ESF graduates are demonstrating marked success in securing work related to their fields of study. Undergraduates who received degrees in December 1999 and May and August 2000 were surveyed to ascertain their current employment status. Of the 78 percent responding, 70 percent were employed in a field related to their course major; 7 percent were employed outside their field of study; 19 percent were pursuing advanced degrees; and 4 percent were available for employment. Careers include: urban forester, landscape designer, paper engineer, chemist, zookeeper, marine resources technician, firefighter and environmental conservation officer.

## Alumni



### Advanced Technology

During the past year, the college made a significant investment in instructional technology.

Multimedia teaching stations and projection units were permanently installed in nine classrooms/laboratories. The stations are fully integrated to access video, audio, computers, and the Internet, allowing faculty to use whatever media necessary to bring information to students.

Investments have also been made in multimedia distance learning and in television production and satellite acquisition facilities. Technological improvements also have been incorporated in renovations to Baker Laboratory. These enhancements include three new public computer clusters and distance-learning facilities.

### 1929

#### Centurion

Michael A. Salato  
Joseph J. Truncer

### 1930

#### Centurion

Clarence Petty

#### Pioneer

Herbert H. Cutler

### 1931

#### Pacesetter

Zigmond A. Zasada

#### Centurion

Horace G. Harris  
Irving H. Isenberg

### 1932

#### Pioneer

George A. Turner

### 1933

#### Founder's Club

The Estate of  
Maurice Landberge

#### Pioneer

Gerald G. Hill

### 1933

#### Pioneer

John H. Rich

### 1934

#### Centurion

Michael P. Lavigna

#### Pioneer

Bruce S. Arnold  
Paul F. Callison

### 1935

#### Leader

Robert E. Richards

#### Centurion

George M. Judson  
Samuel R. Servis

#### Pioneer

Charles P. Brown  
Arthur M. Davies

### 1936

#### Founder's Club

The Estate of Joseph  
E. Gurvitch  
Alec C. Proskine

#### President's Club

Richard E. Griffith  
Malcolm G. Lyon

#### Centurion

Jerome H. Freeman

#### Pioneer

H. Clayton Holbrook  
Royal L. O'Day  
D. Donald Page

### 1937

#### Founder's Club

Walter A. Sherman

#### President's Club

Harry A. Sachaklian

#### Pacesetter

Lawrence J. Borger

#### Centurion

Theodore P. Hipkens  
Leslie Robinette

#### Pioneer

Howard William  
Bartlett  
Robert H. Loweth  
William Mazoff

### 1938

#### Founder's Club

Morris Hirsch

#### Leader

Samuel Grober

#### Centurion

Charles W. Barney  
Neil Croom  
Charles H. Dengrove  
Elmer E. Fisk  
Samuel N. McCain  
Robert Byron  
Williams

#### Pioneer

Gordon S. Bowen  
James V. Martin  
Hartley K. Phinney  
John B. Woodruff

### 1939

#### Founder's Club

Elmer K. Stilbert

#### Leader

Howard E. Ball

#### Pacesetter

Samuel Perry

#### Centurion

Richard B. Bateman  
Hobart L. Geer  
Nathan B. Golub  
Frederick P. Heil  
Samuel A. Newman  
Donald E. Ryan  
Bradford G. Sears  
Jack B. Weinger

#### Pioneer

J. Milton Cowle  
Conrad E. Hermsted  
Helmuth E. Hoerner  
William V. Meyerholz  
George M. Renner

### 1940

#### Founder's Club

Maurice M. Alexander

#### President's Club

Hugh E. Wilcox

#### Leader

William B. Cubby

#### Centurion

James P. Caufield  
Willard F. Schroeder  
Ralph J. Stettner  
Darrell D. Temple

#### Pioneer

Frank B. Barick  
Julien O. Boesinger  
Leon L. Gallin  
Clarence A. Lankton  
Roderic E. Palmer  
Samuel R. Parmelee  
Walter M. Schall  
Charles R. Wardwell  
Herbert J. Widger

### 1941

#### Founder's Club

Domenico Annese  
Charles E. Pound

#### Pacesetter

Foster W. Berry

#### Centurion

The Estate of  
Harry S. Burry  
Norman S. Eppell  
Walter J. Graver  
George D. James Jr.  
Victor Kates  
Frank J. Kovarik  
Zygmund Lenchert

Howard C. Miller  
Robert H. Vernooy

#### Pioneer

Allan E. Anderson  
Ralph J. Bartholomew  
Milton J. Gordon  
Burton E. Helberg  
George N. Hilfinger  
James Ingalls  
Leonid Michelson  
Sidney Mintzer  
John Oram  
Albert W. Roberts Jr.

### 1942

#### President's Club

Edward F. Littlehales

#### Leader

John Fedkiw

#### Pacesetter

John M. Yavorsky

#### Centurion

John H. Farrell  
Solomon H. Krasney  
Robert W. Miller  
Ben Seplowin  
Neil J. Stout  
William Voigt

#### Pioneer

Charles M. Armour  
Howard J. Dean  
Carlton T. Dodge  
Francis H. Felts  
Robert B. Hotaling  
Donald E. Jameson  
George J. Kohout  
Lawrence Leney  
Benjamin A. Morey  
Robert R. Morrow  
Robert L. Schueler  
Charles J. Witter

### 1943

#### Pacesetter

Charles H. Chapman

#### Centurion

James M. Early  
Bernard Fradin  
Keith G. Hine  
Leon Kruth  
John C. Parsell

#### Pioneer

Anthony J. Bellucci  
Richard M. Berry

*Alumni continued*

Clifford Curtis Booth  
 W. Michael Cofnuk  
 John R. Lavigne  
 Chauncey R. Nichols Jr.  
 George E. Prokupek  
 Robert J. Roggie  
 John H. Schumacher  
 Herbert Seidel  
 Robert R. Unterberger  
 Richard F. Watt

**1944**

*Centurion*  
 Robert C. Aldrich  
 Charles J. Berger  
 George Kitazawa  
 Stanford Perry

*Pioneer*

Robert S. Kellar

**1945**

*Centurion*  
 Robert L. Youngs

*Pioneer*

Donald C. Urban

**1946**

*Centurion*  
 George B. Fillian

*Pioneer*

Stanton G. Ernst  
 Robert A. Holcombe  
 Henry M. Kashiwa  
 John R. Martz  
 Floyd W. Olcott

**1947**

*Founder's Club*  
 Carlton W. Dence  
 George W. Lee  
 Edward K. Mullen

*President's Club*

Leo Wiener  
 Robert E. Wolf

*Centurion*

Robert F. Bangert  
 James P. Brogan  
 David M. Hickok  
 Warner T. May  
 George A. Oechsle Jr.  
 Robert Wall

*Pioneer*

Willis C. Dickerman  
 Kenneth G. Haight  
 Burton M. Hesselson  
 Gould J. Hoyt Jr.

William M.  
 Hrushesky  
 George P. Katibah

**1948**

*Founder's Club*

The Estate of Robert  
 E. Hensel

*Centurion*

Daniel M. Baris  
 Lawrence H. Brown  
 Arnold T. Drooz  
 Alexander E. Holstein  
 Thomas J. Luddy  
 James B. Sisson  
 Wayne E. Steele  
 Gabriel T. Turula  
 Clarence W.  
 Vanorman  
 Robert W.  
 Wangenstein  
 Barbara H. Wortley  
 Harold J. Zimmerman

*Pioneer*

Stuart I. Bergman  
 David L. Born  
 John A. Buchanan  
 Lionel Chaffey  
 Donald F. Everett  
 Willard V. Fichtel  
 John D. Hankey  
 K. Ram Malhotra  
 John J. Matthews  
 Bradford E. Monk  
 Gordon L. Newhouse  
 Arthur R. Perrin Jr.  
 Chandler P. St. John  
 Lawrence A.  
 Schimerman  
 Francis J. Stoecker  
 Anthony S. Taormina  
 William R. Taylor  
 Paul Tobler

**1949**

*Leader*

Donald C. McNeill  
 William C. Tierson Jr.

*Pacesetter*

Robert T. Shone

*Centurion*

George R. Armstrong  
 George L. Booth  
 Charles D. Doris  
 Robert R. Eastment  
 Victor J. Jarm

Fred L. Johnson  
 Edwin H. Ketchledge  
 Meyer Laskin  
 J. Kenneth McIntosh  
 Edward K. Nissen  
 Robert F. Reiske  
 Thomas E. Rider  
 Walton B. Sabin  
 Roger W. Strauss  
 Bruce H. Tynan  
 Malcolm S. White

*Pioneer*

Russell S. Andres  
 Alfred P. Coha  
 Harold A. Core  
 John I. Green  
 William J. Hall  
 Ward C. Hitchings  
 Gerald W. Hough  
 Charles R. Innes  
 Leslie W. Kick  
 Charles N. Lee  
 Richard J. Lloyd  
 Francis R. Meduna  
 John J. Morris  
 Richard J. O'Brien  
 C. Erwin Rice  
 Herbert Schnipper  
 George N. Semmens  
 Philip L. Thornton  
 R. Scott Withers

**1950**

*Founder's Club*

Curtis H. Bauer  
 William Harmon  
 Alfred E. Komar  
 Robert M. Sand  
 Richard C. Saunders

*President's Club*

Harrison H. Payne  
 Arne I. Thomsson

*Leader*

David G. Anderson  
 R. Wesley Fuller Jr.  
 Arthur H. Lambert Jr.  
 Arthur P. Nishball  
 Frederick J. Slater Jr.

*Pacesetter*

Kenneth R. Havens Jr.  
 Joseph H.  
 Shuttleworth

*Centurion*

William Anderson  
 Louis G. Catalanotto  
 William S. Dunn

Wilson F. Edinger  
 Amby S. Emmick  
 Arthur R. Eschner  
 Lawrence W. Hill  
 Henry F. Janssen  
 Frank J. Mack  
 Walter R. McAllester  
 Leslie G. McCowan  
 James O'Keefe  
 Walter S. Riley  
 George Roberts  
 Rhoades F. Sawyer  
 Glenn Storms  
 Edward A. Thuesen  
 Howard F. Thurman  
 Kenneth M. Watson  
 John S. Wenzel  
 Aubrey E. Wylie  
 Harold F. Zigmund

*Pioneer*

Richard E. Benton  
 C. Otto Berggren  
 John M. Brown  
 George B. Burton  
 Charles J. Carome  
 Carlton M. Church  
 Sidney Diamond  
 Donald E. Dorn  
 Julius J. Eckert  
 Floyd H. Farrington  
 James A. Geryal  
 Russell C. Grimshaw  
 Dean Harding  
 Duncan A. Harkin  
 David E. Heldt  
 Joseph A. Hill  
 George P. Howard Jr.  
 Ralph B. Johnson  
 Edward J. Kornmeyer  
 John F. Kraus  
 Richard J. Krueger  
 Paul C. Lambert Jr.  
 Albert C. Lawrence  
 Robert W. Lewis  
 Raymond J.  
 Malkiewicz  
 Joseph K. Murphy  
 Leonard E. Partelow  
 James D. Pelkey  
 Donald E. Peterson  
 James O. Preston  
 Edward H. Rickels  
 Robert J. Ruch  
 Robert L. Schreiner  
 Elmer G. Shafer  
 Richard B. Steere

Wesley N. Stickel  
 Gerald W. Van Gilst  
 Robert F. Verity  
 Christen Yang

**1951**

*Founder's Club*

Olin D. Bockes  
 Gabriel F. Buschle  
 Yun J. Jen

*President's Club*

L. Richard Hornbeck

*Pacesetter*

Gilbert P. Cameron  
 Carl A. Miller

*Centurion*

Roy C. Beckwith  
 C.D. Coates  
 John T. Early  
 Donald M. Gilmore  
 George A. Hermans  
 Albert C. Jensen  
 Francis J. Kohring  
 Frank W. Lara  
 William B. Lowe  
 Richard E.A. Lyon  
 Robert A. Reyneke  
 Paul W. Ryan  
 William C. Vernam  
 George A. Vossler

*Pioneer*

H. Gere Beecher  
 William D. Boyer  
 Phillip C. Capone  
 John G. Casagrande  
 Howard F. Cromwell  
 Donald H. Fry  
 Francis B. Gallagher  
 Joseph S. Gawron  
 David L. Hadley  
 Malcolm S. Ingison  
 Jack J. Karnig  
 Thomas A.  
 McCartney  
 Winfield L. McGrath  
 J. Paul Owens  
 James G. Patsos  
 Donald R. Patten  
 Robert R. Peck  
 Gerald F. Prange  
 Calvin F. Reynolds  
 William E. Richoll  
 Fred D. Richter  
 James S. Sabin Jr.  
 John B. Sandner Jr.  
 Joseph A. Slattery

Richard C. Tarr  
 Robert B. Upper  
 Robert C. Van Etten  
 Robert C. Whitney  
 Kenneth L. Woodcock  
 Frank M. Yasinski

**1952**

*Founder's Club*

Raymond M. Smith

*President's Club*

John W. Brooks  
 James D. Seaman

*Leader*

Olin V. Hyde  
 Edwin A. Vonderheide

*Pacesetter*

Robert B. Johnson

*Centurion*

William A. Cowan  
 James G. Crowley  
 John H. Cunningham  
 Albert H.  
 Frankenbach  
 Richard P. Hamilton  
 James M. Heinike  
 Charles F. Horton  
 Stuart E. Hosler  
 William G. Hughes  
 John R. Knapp  
 Harry J.  
 L'Hommedieu  
 Charles L. Noble  
 John S. Porter  
 John E. Ring  
 Walter G. Robillard  
 Howard S. Rothe  
 Robert J. Shimer  
 Raymond W. Snyder  
 Henry D. Struve  
 Charles S. Sweitzer  
 Donald G. Ward  
 Merrill B. Wish  
 David L. Wood

*Pioneer*

Joseph Abelson  
 Stanley L. Becker  
 Edward R. Berman  
 Ira L. Bray  
 Robert C. Brewer  
 Robert D. Burgess  
 Joseph L. Camarda  
 William T. Gladstone  
 Warren L. Hartman  
 Jay G. Hutchinson  
 Ronald M. Lanner



*Alumni continued*

Arnold L. Larsen  
Robert Levine  
Roy V. McCready  
Arthur McKee  
Irving Miller  
Wayne J. Smith  
Lloyd T. Soule  
James W. Stewart

**1953***President's Club*

Robert W. Young

*Leader*

David G. Anderson  
Robert W. Frevert  
Robert L. Smuts

*Pacesetter*

William S. Anderson Jr.  
George W. Nile

*Centurion*

John W. Barrett  
Robert A. Clark  
Stephen B. Coulthart  
Carl O. Hansen  
Edward P. Kohler  
Stanley J. Marks  
William P. Nagel  
Harold E. Schumm  
John P. Vimmerstedt  
Sydney J. Walker

*Pioneer*

William F. Aloisi Jr.  
Wilbur H. Carey  
E. Douglas  
Cruckshank  
Emlen H. Faerber  
Bernard J. Galvin  
Herbert A. Hoffman  
Walter Jarck  
Edgar A. Kupillas  
William B. Leak  
Walter Lobotsky  
Robert L. Lyon  
Charles L. Mahoney  
Gordon Roy Nielsen  
Dickinson H. Pellissier  
Robert J. Purick  
Wilson J. Schumaker  
William C. Skillman  
Philip Suters  
Guenther K. Weidle  
Henry P. Wilhelmi  
Lawrence G. Wilke

**1954***Founder's Club*

Walter P. Smith

*Pacesetter*

Ellis B. Cowling

*Pacesetter*

George Sears

*Centurion*

Phillip D. Case  
Robert D. Crossley  
Gordon C. Deangelo  
William C. Fessel Jr.  
Thomas L. Havill  
Robert M. Hick  
Richard M. McEvoy  
Robert G. Reimann  
Ernest A. Schwab  
Peter J. Schwartz Jr.  
William J.  
Shaughnessy  
Gerard T. Sowinski  
Murray F. Valentine

*Pioneer*

Robert W. Bradbury  
Nelson F. Button  
Robert W. Carpenter  
W. McKay Carson  
Robert F. Caswell Jr.  
Philip C. Clark  
Charles Eager  
James R. Field  
Stan Geda  
Gerard G. Glasser  
James F. Hern  
David H. Kimbrell  
William A. Kissam Jr.  
George T. Lambe  
Trygve C. Lucken  
Charles H. Mayhood Jr.  
George H. Rosenfield  
Richard Silliman  
Hawley L.  
Woolschlager

Malcolm L. Young  
Robert H. Zulch

**1955***Founder's Club*

Daniel P. Cooke

*President's Club*

William H. Trice

*Leader*

Arthur P. Rowsell

*Pacesetter*

Robert W. Ingham

*Centurion*

John R. Ackermann  
Robert L. Bailey  
Roger E. Barlow  
Robert W. Bernhardt  
Deane H. Brink  
Gary F. Buckingham  
George R. Cataldo  
James F. Connelly  
Robert G. Cross  
James B. Goodwin  
John E. Grammel  
Henry M. Greenhouse  
Lawrence R. Hawkins  
David W. Humphrey  
William C.  
Kratzenstein  
Dieter F.A. Kutsch  
Edwin F. Loch  
Dan Meyer  
William P. Petro  
Richard G. Serino  
Robert W. Steller  
Edward H. Stone II  
Nicholas G. Walsh

*Pioneer*

Gene E. Allen  
Robert Barker  
Howard W. Burnett  
Barry S. Colassard  
Sergi L. Demchuk  
George C. Finck  
James M. Harper  
Larry Isaacson  
Keith B. Johnson  
Thomas C. Luche  
Daniel J. O'Reardon  
Daniel B. Place  
Douglas W. Scharbach  
Donald A. Schultz  
Robert T. Steinholtz  
Carl M. Van Husen  
Peter J. Zullo

**1956***President's Club*

Gino P. Biasi  
Donald L. Ferlow

*Pacesetter*

Emmanuel T. Van  
Nierop

*Centurion*

William B. Ayars  
Charles R. Knight  
George E. Watson Jr.

*Pioneer*

Roger M. Baker Jr.  
Frank W. Bassett  
George S. Braman  
Richard L. Carpenter  
James J. Curley  
John E. English  
John W. Follis Jr.  
Barton C. Green  
Thomas W. Hodges  
William J. Hohns  
Jack E. Lukins  
Robert E. Metzger  
Zenon Prusas  
Richard O. Reed  
Walter B. Sullivan Jr.  
Robert L. Talerico

**1957***President's Club*

Herbert G. Arlt Jr.

*Centurion*

Karl K. Blixt  
Harold A. Boyle  
John R. Greene  
Richard M.  
Klingaman  
Robert E. Manning  
Richard H. Miller  
Ralph F. Mumme  
George Y. Nishimoto  
Richard D. Parker  
Norman A. Richards  
Wesley M. Rickard  
Paul R. Sand  
Johannes Smid  
Terry L. Towner  
Walter F. Yamrick

*Pioneer*

John M. Ackerman  
Richard G. Allen  
Paul H. Arndt  
Rodney Allen Barber  
John C. Burton  
Bernard M. Crossman  
Robert F. Denny  
Jeffrey V. Freeman  
Stanley I. Goldsmith  
Scott K. Gray III  
Edward D. Holmes  
Allen F. Horn Jr.  
Evert W. Johnson  
Ralph I. Jurgensen  
Robert C. Margiloff  
Joel A. Miller  
John A. Pitcher  
Charles E. Rogers

Frank C. Smith  
Fortunato Stanziale  
J. Alfred Stringham  
Willard G. Ulmer

**1958***President's Club*

Donald R. Heady  
David W.  
Woodmansee

*Leader*

Philip J. Kohlbrenner

*Pacesetter*

Richard T. Brewster  
Paul G. Bucklin  
Roswell K. Miller  
Charles P. Mowatt  
William S. Smeltzer

*Centurion*

Friedrich J.  
Aufschlager  
Herbert D. Belknap  
Robert M. Bownes  
Wilfred A. Cote Jr.  
Joseph R. Haug  
Otto W. Kratzenberg  
Richard J. Patrick  
James F. Ring  
William S. Ringwall  
Clyde D. Robbins  
John R. Stell  
Roger A. Swanson

*Pioneer*

Gordon L. Adams  
Robert M. Bauer  
William L. Betts  
Geoffrey P. Conine Sr.  
Donald R. Cowles  
Thomas K. Daughtrey  
David Deretchin  
Robert A. Dykes  
Henry P. Gore  
Peter T. Gregory  
William L. Maine  
Edward D. Morrison  
Richard L. Neu  
Karl E. Nisoff  
George S. Petrie  
Eric P. Rasmussen  
George E. Raynor Jr.  
Kenneth E. Reymers Jr.  
Richard J. Roberts  
Alfred Schainholz  
Timothy M. Smith  
Frederick H.  
Thompson

George Treier  
Curtis A. Wilksen  
Alan D. Wilm  
Karl E. Wolter

**1959***President's Club*

Ronald W. Becker

*Leader*

Edward A. Karsch

*Pacesetter*

Michael H. Jones

*Centurion*

Frank W. Bulsiewicz  
John H. Dean  
Richard E. Garrett  
Edward H. Gleason Jr.  
James C. Hamer  
Frederick S. Hopkins  
David T. Landers  
Robert C. Nowack  
David E. White  
John F. Wixted

*Pioneer*

James H. Allen  
Charles F. Brooks  
David E. Clark  
Bruce R. Dayton  
Charles W. Donner Jr.  
Charles H. Frommer  
Fred J. Fuller  
Royal C. Garlock III  
Anthony W. Kotz  
Richard W. Perkins Jr.  
Harry W. Porter Jr.  
Jerome M. Rose  
John M. Roubie  
Richard G.

Rounseville

Salvins Strods  
Robert A. Ulbrich  
John A. Winieski  
Robert W. Wright

**1960***Founder's Club*

Richard H. Gustafson

*President's Club*

Frank C. Shirley

*Leader*

Alan W. Larson  
Leroy Z. Page II  
Kenneth L. Williams

*Pacesetter*

Bruce F. Hearn

*Alumni continued**Centurion*

Clyde M. Hunt  
Ronald V. Volk  
Richard G. Ward  
Joseph A. Wray

*Pioneer*

Peter Bergh  
Richard H. Gustafson  
John Hauptman  
James R. Hillis  
Roger W. Hutchinson  
Philip W. Kennedy  
Joseph L. Landino  
Mark J. Marquisee  
John M. McSweeney  
George L. Momberger  
George W. Noble  
Warren A. Richardson Jr.  
John A. Satkowski  
George J. Schmitt  
David M. Sharpe  
Olof E. Swanson  
Gerhard R. Tegeder  
J. Daniel Wojcik

**1961***Pacesetter*

James M. Giffune

*Centurion*

Howard R. Ecker  
Michael Gritz  
Lewis T. Hendricks  
Raymond J. Kordish  
John A. McShane  
Tom L. Ryan  
Wayne A. Smetanka  
Lester L. Straw

*Pioneer*

Raymond D. Bourdeau  
F. Joseph Brang  
Robert L. Demeree  
Stetson C. Edmunds Jr.  
Robert C. Ferguson  
Alan H. Hartig  
Douglas K. Lehmann  
David D. Parker  
Rodney J. Reining  
John E. Tiffany  
Larry E. Weeks

**1962***Centurion*

Christopher L. Murphy  
Daniel C. Walton

*Pioneer*

Gordon D. Cook  
Robert W.H. Gunther  
Peter J. Kirk  
W. David Klemperer  
Kenneth B. Laffend  
John A. Lewicki  
Daniel L. Marlatt  
Robert A. Patsiga  
John M. Radosta  
Anthony P. Rizzio  
Horace M. Smith  
John E. Tripp  
Eugene A. Truderung  
Gerald R. Yocum

**1963***Pacesetter*

Donald U. Peet  
Hermann E. Welm

*Centurion*

Terry L. Amburgey  
Alan H. Barbour  
Joseph J. Batelka  
David E. Butler  
Lester J. Lee  
David L. Van Schaick  
Stephen G. Weatherly  
Gerald W. Zimmer

*Pioneer*

Douglas L. Bartow Jr.  
Keith A. Butters  
Frederick J. Gerty Jr.  
Lawrence S. Gordon  
Richard M. Gray  
David L. Hathway  
Carl G. Heinz  
Daniel B. Houston  
Stephanie H. Labumbard  
Melvin A. Lipson  
Eugene M. Litz  
John A. Locke  
Edward J. Olinger  
Ithamar E. Pollak  
William L. Quartz  
Colin A. Rabe  
Charles A. Rapp  
Curtis A. Reese  
William P. Stevens  
David J. Zlomek

**1964***President's Club*

Susan Mead Hughson  
Raymond J. Nozynski  
Carl E. Vogt

*Leader*

Harold G. Brotzman  
Alan C. Eachus

*Pacesetter*

Harry A. Barber  
Harold E. Burghart  
James M. Colby  
Chad E. Covey  
Alan B. Kubarek  
Thomas E. Okoniewski  
Garth L. Wilkes  
Louis N. Wood Jr.

*Centurion*

Bruce R. Brownell  
Glenn M. Cole  
Richard G. Croop  
H. Jesse Dubin  
Gerald F. Haver  
Donald Hennig  
Geoffrey W. Laidman  
Chi Long Lee  
James H. Northway  
Robert V. Patrick Jr.  
Sue M. Rosenstrauch  
Donald E. Wirth

*Pioneer*

Robert H. Bathrick  
Stephen W. Buechner  
Richard J. Cipperly  
Richard L. Coalson  
Lawrence R. Cohen  
George D. Dohn  
Carl S. Golas  
William T. Hauck  
Philip W. Larson  
Donald Y. Noda  
Bruce R. Ohara  
Richard J. Okun  
Ronald Raineri  
Andrew D. Root  
William J. Schell  
Herman F. Schulz  
James C. Stansbury  
Maximillian Winkler

**1965***Pacesetter*

James E. Cheesman

*Centurion*

Daniel E. Chappelle  
Robert Lee Edmonds  
David W. Hulse  
William M. Larmon  
Keizo Okamura  
James W. Tinney Jr.  
Krishna P. Vemuri

*Pioneer*

Norman E. Bell  
Anthony J. Cardwell  
Richard A. Cunningham  
Robert G. Fowler  
Thomas Horbett  
Anthony N. Jeric  
Bruce A. Martin  
Anthony J. Muraca  
Donald E. Neuroth  
Hugh T. Putnam Jr.  
Michael S. Rizzio  
Earle H. Sherrod  
John B. Slater

**1966***President's Club*

Donald Fraser Behrend  
Corleen J. Thompson

*Pacesetter*

William F. Derouchie  
Donald E. Koten  
David C. Randall

*Centurion*

Peter D. Aller  
Robert S. Bond  
Raymond E. Davis  
Jeffrey A. Gebrian  
George W. Hebard Jr.  
David M. Norris  
Jock Robie  
Richard W. Sage, Jr.  
Anatole Sarko  
James R. Tremlett

*Pioneer*

Paul H. Amidon  
Frank C. Basile  
Robert W. Beraud  
Steven P. Clark  
Ronald T. Collins  
Malcolm W. Coulter  
Terry J. Dailey  
Michael G. Dinunzio  
David L. Franke  
Matthew J. Giordono  
Walter P. Gould  
John J. Keefe  
Dwayne K. Klossner  
Duncan J. Mackey  
Paul Menge  
M. Gill Petri  
Thomas R. Pigage  
Reginald C. Prouty  
Walter V. Purnell Jr.  
Neil A. Redding  
Erwin R. Ruckel

Lee D. Salber  
Walter G. Sall  
Robert Y.T. Suen  
Robert M. Ungerer  
David C. Wagner  
Norman K. Wagner

**1967***Pacesetter*

Paul F. Ebersbach  
Richard L. Gray

*Centurion*

Joan K. Chia  
Jon R. Crofoot  
Michael J. George  
David P. Jones  
William B. Kuhl  
Douglas C. Myers  
Henry M. Ortmann  
Edward P. Racht  
Robert W. Sauer  
David A. Vredenburgh  
Mikio Zinbo

*Pioneer*

Terry A. Beerman  
William J. Bertrand  
Donald M. Boone  
Dana C. Chapman  
Richard W. Elliott  
Richard W. Hatheway Jr.  
Gregory A. Hill  
John F. Jones  
Edward J. Lengyel  
Joseph H. Nalbach  
Clarence M. Putman  
Gary F. Regan  
Frank T. Rose  
R. Stephen Shauger  
Daniel A. Sulitka  
Paul L. Sutton  
John E. Torpy II  
David P. Tousignant  
David L. Tyler  
Gary J. Vajay  
Leslie R. Wedge  
Thomas A. White  
Griffin W. Wilsey

**1969***Leader*

Walter L. Cook Jr.

*Centurion*

Lloyd B. Adams  
Ann M. Carey  
Richard R. Curran  
R. Allen Falls  
Jeffrey M. Frohn  
Michael J. Geiss  
Ronald N. Hill  
Michael C. McCloskey  
William P. Metzgar  
James M. Rausa  
Timothy P. Roberts

*Centurion*

Paul J. Budris

*Alumni continued**Pioneer*

James L. Bartlett  
 Dennis A. Bauder  
 T. Anath Bhaskaran  
 Peter K. Bosch  
 Robert P. Burnett  
 Robert A. Bye Jr.  
 John J. Cesar  
 James A. Clay  
 David Clough  
 David M. Crans  
 Thomas M. Cutter  
 Michael F. Cyr  
 David Duclos  
 Patrick Fenn  
 Kenneth E. Finch  
 Dwight D. Folts  
 Nicholas E. Gardinier  
 Frederic A. Gros  
 Peter W. Grupe  
 James A. Hill  
 Samuel J. Ippolito  
 Wayne W. Jones  
 David L. Kosboth  
 Richard P. Lewis  
 George W. McBride  
 Georgiana M. Norton  
 Gene L. Padgham  
 Daniel J. Pihlblad  
 Bruce D. Reid  
 Robert G. Salisbury Jr.  
 Richard A. Schwab  
 John W. Schwandt  
 Paul A. Schwonke  
 Eric Valentino  
 Carl P. Wiedemann  
 David J. Wohlbach

**1970***Leader*

Daniel C. Wightman

*Centurion*

David M. Atwood  
 Len C. Carey  
 James A. Dills  
 Mark K. Levanway  
 Stuart H. Sachs  
 Robin D. Worcester

*Pioneer*

Sidney E. Balch  
 James A. Beil  
 David L. Bleyle  
 Richard P. Copp  
 Donald L. Cranston  
 John F. Daly Jr.  
 William R. Diedrichs

Richard T. Doyle  
 Robert J. Dunn  
 William G. Ebersbach  
 John C. Farrar  
 Robert F. Faunce  
 Dennis S. Fellows  
 Brian Fenlon  
 Knowlton C. Foote  
 Gordon M. Heisler  
 Frederick J. Holman  
 Robert E. Howard  
 John F. Huyck  
 Richard D. Jarvis  
 Robert P. Jones  
 James R. Keenan  
 Jack R. Kingsley  
 Lawrence F. McGrail  
 Grady S. McMurtry  
 Dennis R. Parent  
 Russell A. Parham  
 Richard T.  
 Rickenbrode  
 William J. Schneider  
 Bruce C. Shelley  
 Dennis R. Sibley  
 James J. Smith  
 Jamieson R. Steele  
 Wesley B. Stiles  
 David A. Szurley  
 Gary B. Will  
 Stephen C. Yorton

**1971***President's Club*

Nancy A. Mayer

*Pacesetter*

Barry F. Burton  
 Geoffrey K.  
 Cummings  
 John D. Fey  
 David R. Mele  
 James M. Wheeler

*Centurion*

Linda M. Bergin  
 Werner R. Burkat  
 Richard E. Craig  
 James Deines  
 Kevin T. McLoughlin  
 Lloyd E. Peterson  
 James W. Rack  
 Ronald F. Reed  
 Wayne H. Schacher

*Pioneer*

William H. Ashley  
 Fred C. Ballantyne  
 Michael D. Bamberger

Jeffrey O. Barnes  
 David A. Bowman  
 Frederick R. Branton  
 John F. Brennan  
 Joseph J. Buschynski  
 Robert M. Carr  
 Douglas G. Cerretani  
 Jeffrey G. Crary  
 E. Michael Ermer  
 Kenneth A. Gifford  
 D. Clayton Grove  
 Gregory H. Hart  
 Michael J. Hasenstab  
 Samuel S. Hirschey  
 William V. Hubbard Jr.  
 Thomas E. Kelley  
 Michael Kudish  
 Paul J. Kulick Jr.  
 Roman S. Kulik  
 J. Edward Langwig  
 Edwin S. Malesky  
 Richard H. Mider  
 Peter A. Mikolaitis  
 Thayer A. Miller  
 Walter G. Neuhauser  
 Frederick M.  
 Noetscher  
 Philip Richard  
 Opdycke  
 John L. Osinski  
 Richard H. Powell  
 Richard J. Roberts  
 David H. Robinson  
 Peter J. Rzasa  
 Lynn A. Selden  
 Steven R. Shraeder  
 Howard A. Simonin  
 Gary W. Smith  
 Vito J. Sparace  
 John M. Thornton  
 Gary L. Tompkins  
 James R. Urban  
 Thomas H. Wahl  
 George J. Walter  
 Leonard A. Zigment

**1972***Leader*

Jeffrey H. Booher

*Pacesetter*

John A. Thonet

*Centurion*

Andrew S. Bell  
 Daniel M.  
 Birmingham  
 James V. Breuer

Edward J. Hogan  
 Donald C. Keefer  
 Terence L. Nyman  
 Lawrence A. Rathman  
 David F. Witschi

*Pioneer*

Lewis P. Allen  
 William A. Ames  
 James H. Barden  
 William F. Bones Jr.  
 Wilfred A. Cote III  
 Steven M. Dauber  
 Claire Titcomb Ders  
 Dennis A. Gigliotti  
 James Goulet  
 Sharon P. Hart  
 Fran D. Hershfield  
 Gregory G. Hoer  
 Roy D. Hopke  
 Donald L. Hosenfeld  
 Paul A. Ignatz  
 Ken J. Kasprzyk  
 Robert E. Lamoy  
 John F. Lepkowski  
 John L. Litzenberger Jr.  
 Paul W. Lock Jr.  
 Paul G. MacDonald  
 David A. Molloy  
 Ross Morgan  
 Darrell C. Osterhoudt  
 R. Bruce Oswald  
 James R. Patnode  
 David J. Peckham  
 Thomas E. Rodencal  
 John E. Turner  
 Ross A. Virginia  
 Scott E. Webster  
 Victor F. Wehnau  
 Thomas L. Wendt  
 William A. White  
 Charles H. Youmell

**1973***President's Club*

Robert F. Thaisz

*Leader*

Douglas W. Charles

*Centurion*

Randall P. Blass  
 Robert F. Cerza  
 Justin F. Culkowski  
 John S. Gasiorowski Jr.  
 Douglas H. Greiner  
 Christian C. Heins  
 John H. Mruz  
 Robert E. Rood

Theodore P. Wagner

*Pioneer*

Edward A. Arnold  
 Richard C. Bailey  
 Thomas A. Barba  
 Eudell C. Bivens  
 Richard T. Brantigan  
 Michael D. Bryan  
 David A. Bush  
 Geoffrey A. Christoff  
 Dale A. Demler  
 William J. Doran  
 Carl W. Eller  
 Thomas E. Fake  
 James A. Foster  
 David J. Francescotti  
 Preston S. Gilbert  
 Michael T. Girvin  
 Albert Gomolka Jr.  
 James W. Hornbeck  
 Walter D. Hubbell  
 William R. Jacobi  
 Robert W. Jutton  
 Larry E. Kahn  
 John T. Kavanaugh  
 William A. Keefer III  
 Susan B. Klossner  
 Gregory A. Knowlton  
 Gerald A. Kostyk  
 William K. Kropelin  
 Kenneth D. Kugel  
 Jack V. Kuney  
 Edward C. Landau  
 Thomas D. Lee  
 Thomas J. Lynch  
 James B. Marean  
 Christopher A. Miller  
 Thomas G. Miller  
 Melvin L. Moore  
 Edward F. Neuhauser  
 Ray M. Oram  
 William S. Ostaff  
 Roberta L. Pickert  
 William L. Pryor  
 Barbara S. Raffaldi  
 Paul A. Ray  
 Michael  
 Schneggenburger  
 Nelson B. Shaw  
 James C. Shearer  
 Victoria Miles Smith  
 Craig R. Smithgall  
 Nancy E. Smithgall  
 Robert R. Stevens  
 Arnold E. Talgo  
 Frederick M. Teigler

Christian D. Tetz  
 William S. Todaro  
 Michael H. Townsend  
 Peter J. Trowbridge  
 DeLancey D. Wayne  
 Alan J. Will  
 John T. Woolever

**1974***President's Club*

Richard J. Ahearn

*Leader*

Alan M. Gordon

*Centurion*

James T. Christensen  
 Margaret G.  
 Culkowski  
 Richard T. Dabruzzo  
 Arthur G. Dillon  
 Mark E. Hansen  
 George R. Hoffman  
 Philip M. Juravel  
 Deborah Kapfer  
 M. Jane Stinson

*Pioneer*

Robert T. Bailly  
 Jeffrey E. Barnes  
 Christine Barone  
 David F. Barone  
 Arthur F. Bonitz Jr.  
 Dennis T. Brown  
 Randal M. Brown  
 Thomas P. Burns  
 William M. Burry  
 David A. Byers  
 Stephen J. Byrne  
 James R. Cain  
 Richard D. Cannon  
 Edward B. Clark  
 Tim L. Coates  
 Stephen E. Coupal  
 Thomas F. Cuffney  
 Weston J. Davis  
 Joseph A. Detor  
 Ralph B. Edwards  
 David R. Ellis  
 Edward S. Engelman  
 Patrick S.A. Flood  
 Judy G. Gilpatric  
 Paul R. Glowienka  
 Anthony B. Greene  
 Thomas J. Hill  
 Dennis Hlavac  
 Deborah A. Howe  
 Theodore I. Jerrett  
 J. Michael Kennedy

*Alumni continued*

Matthew P. Killeen  
 Roger L. Klaus  
 Stanley P. Koenig  
 William C. Kohler  
 Robert W. Loveless  
 John D. Macmillan  
 Michael L. May  
 David H. Nelkin  
 Jeffrey D. Palmerton  
 Richard G. Pancoe  
 Charles E. Pound Jr.  
 David M. Rieger  
 Craig L. Rosenbloom  
 Stephen K. Ruoff  
 Richard M. Rybinski  
 Donald P. Schaufler  
 Alan J. Schellhamer  
 Robert A. Schrader  
 David K. Seim  
 Jean Shaback  
 Arthur J. Stipanovic  
 Michael D. Strutz  
 Stanley D. Swierz  
 Scott W. Tirrell  
 Theodore S. Torpy  
 Kathleen Dougherty  
 Tusa  
 Martin Vandergrinten  
 Diane J. Walter  
 John P. Warneck  
 Warren L. Westlake  
 William T. Wike  
 Stephen M. Young

**1975**

*Leader*

Keshar M. Bajracharya  
 George H. Ellis  
 Robert R. Quinn

*Pacesetter*

James H. Culbert  
 Moira B. Glaccum  
 Michael B. Maloney  
 Harry D. Stobie Jr.

*Centurion*

Edward F. Carter  
 Bov B. Eav  
 Peter J. Frawley  
 Stephen D. Goodman  
 James D. Parker  
 Richard C. Pedersen Jr.  
 Patricia Clark Visser

*Pioneer*

Frederick W. Adriance Jr.  
 Jonathan D. Babcock

David I. Blaushild  
 Gary W. Brown  
 Russell E. Carlson  
 Dennis B. Carmichael  
 Gregory A. Chase  
 Anne S. Cumella  
 Robert S. Cumella  
 Donald R. Dixon  
 Stephen Drown  
 John E. Ferrell  
 Robin C. Foss  
 Allen J. Frishman  
 Stephen L. Fuller  
 Warren J. Goercke  
 Steven W. Haerter  
 Ted Oliver Hale  
 Deborah R. Hancock  
 Donald M. Hancock  
 Michael R. Harnett  
 Judith A. Henningson  
 David W. Hicks  
 George F. Howlett Jr.  
 Spencer G. Jarrett  
 Scott J. Josiah  
 Timothy M. Kean  
 Kevin J. Kehoe  
 B. Thomas Kenna  
 Edward H. Klass  
 Mary C. Kropelin  
 James P. Lawler  
 Paul W. Leuzzi  
 Charles K. Likel  
 David F. Linehan  
 Daniel R. Mahns  
 David F. Majewicz  
 William L. Mayo Jr.  
 Jan E. McCarthy  
 Russell D.  
 McCullough  
 Thomas A. Migdalski  
 Brant N. Miller  
 George H. Moeller  
 Kathleen E. Moore  
 Jean Pierre Moreau  
 John H. Murray  
 John M. Raich  
 Daniel L. Schallmo  
 Gary R. Schoonmaker  
 Robert L. Slavicek  
 William A. Snyder  
 Steven G. Streitell  
 Robert T. Strong  
 Carey E. Vasey  
 Roland R. Vosburgh  
 Francis J. Walton  
 David A. Warne

Elizabeth M. Warner  
 Robert C. Webster Jr.  
 Thomas M. Zelker

**1976**

*President's Club*

Jan J. Chizzonite  
 Paul R. Waldner  
 Christine Wendel

*Pacesetter*

Richard M. Baskin  
 Robert R. Evans  
 David R. Hill

*Centurion*

Betsy J. Boyce  
 Marion S. Burry  
 Alan B. Cady  
 Michael H. Clapper  
 Robert S. Danskin Jr.  
 Susan J. Ficarro  
 Gary Mastroeni  
 Donald E. Moore III  
 Robert J. Quesada  
 Alan M. Rhodes  
 Donald A. Salvesen  
 George J. Steele  
 David L. VanTress

*Pioneer*

Steven R. Alm  
 Cheryl B. Arnold  
 William L. Bohn  
 Robert L. Bridge  
 David J. Dimmick  
 Stephen D. Dragone  
 Laurie H. Duncan  
 Richard S. Feldman  
 Michael P. Fullam  
 Bruce A. Gilman  
 Carol S. Glenister  
 Steven H. Golden  
 Gene Goundrey  
 David Hackworth  
 Sandra J. Halbritter  
 Charlene M.  
 Hamiwka  
 Gerald D. Hansen III  
 Sarah R. Haskett  
 Richard J. Heppeler  
 Bruce R. Hoskins  
 Douglas C. Jones  
 Jeanne Laplante  
 Kavinski  
 Mark W. Keister  
 Charles J. Klein  
 Thomas A. Kuekes

Theodore E. Lauve  
 Bruce Loverock  
 Willard M. Mayo  
 Joseph M. McManus  
 Linda M. Michels  
 Alfred V. Mollitor  
 James D. Murray  
 A. Neil Newman  
 Glenn T. Pearce  
 John P. Pearson  
 Charles K. Porter  
 Roger A. Post  
 Linda Anderson  
 Robinson  
 John E. Roth  
 Paul L. Schwartz  
 Michael D. Selender  
 David C. Spanganberg  
 Dana Sparhawk  
 Edwin J. Steck  
 Thomas E. Stewart  
 Robert A. Turton  
 Gregory J. Westfall  
 David H. Yerton

**1977**

*Leader*

Dennis P. Flanagan  
 Marcus F. Van Eck

*Pacesetter*

Patsy Popoli  
 Russell F. Seus  
 Mark T. Watkins

*Centurion*

David J. Allen  
 Charles T. Beatty  
 Susan Briggs  
 Richard H.  
 Chamberlain Jr.  
 William C. Dennis  
 Alma I. Hix  
 Scott D. Kalb  
 Pat Martz  
 Frederick D.  
 McCandless Jr.  
 Douglas E. Meisner  
 Robert M. Nuzzo  
 Scott T. Saroff  
 Allen T. Stehle  
 James E. Sutherland  
 Jeffrey H. Ten Eyck  
 Robert R. Throssell  
 Brian R. Todd  
 Glenn A. Turner  
 Donald J. Turton  
 Carol Yasukawa



*Student Engagement*

At ESF we endeavor to engage our students in a variety of learning experiences from the classroom, the field, and the community. We believe well-rounded students develop into productive citizens.

High ratings received in the “National Survey of Student Engagement,” a study of how colleges encourage student learning, confirm this. ESF was listed among the “Strong Performers: Academic Challenge.” Our senior-level students rated the challenge of their coursework among the highest of the doctoral-intensive institutions in the study.

“Think globally; act locally” is more than a bumper sticker phrase at ESF — it is a way of life. One-third of our students are involved in some form of community service outside their college activities.

Student service projects include maintaining trails in the Adirondacks, tutoring elementary school students, volunteering at local soup kitchens, and an Earth Week cleanup operation.

The fall 2000 semester saw the advent of the ESF Learning Community, which provided a unifying theme or experience for first-year students by dynamically linking their residence and academic activities.

The success of the inaugural learning community has given way to the addition of a second learning community for 2001-2002.

*Alumni continued**Sponsored Research*

Since 1911, ESF has attracted a worldwide clientele of industrial, governmental and professional groups.

Major sponsored research projects include:

“East of Hudson Terrestrial Process Studies,” sponsored by the New York City Department of Environmental Protection, is evaluating the effectiveness of various practices to minimize the contribution of pollutants to the reservoirs.

“Biomass Power for Rural Development,” sponsored by the U.S. Department of Energy, the U.S. Department of Agriculture and the NYS Energy Research and Development Authority via Niagara Mohawk Power Corporation, is developing a model enterprise to produce biomass for sustainable power generation.

“American Chestnut Research and Restoration,” sponsored by the state Legislature and the American Chestnut Association's New York chapter, has ESF researchers working to genetically engineer a blight-resistant American chestnut in an effort to restore the tree, which was decimated by blight in the early 1900s.

*Pioneer*

Ronald G. Abraham  
Michael L. Anderson  
Anne Henderson  
Arzapalo  
Catherine Rigge  
Baranello  
Timothy L. Barnard  
Alan J. Bauch  
Lewis R. Becker Jr.  
Paul L. Belanger  
Terry A. Boos  
Michael E. Borghard  
John W. Bovet  
Kenneth P. Brown  
James H. Cane  
Marc Richard Caufield  
William H. Chamberlain  
David M. Champagne  
Michael J. Ethier  
Richard Barr  
Fitzgerald  
Gerald E. Franz  
William Hamersky  
David R. Hampson  
Harold C. Heintz  
Eugene J. Hogan Jr.  
Melvin T. Hotaling  
Thomas M. Hulchanski  
Steven F. Jaffe  
Joyce Kelly-Reif  
Steven M. Kelly-Reif  
Karen J. Kirkman  
Kenneth L. Kogut  
James E. Kundell  
Kevin K. Kyhos  
Robert G. Lacolla  
Kim Lloyd Mann  
April K. Maron  
Paul J. Martin  
Cheryl L. Mayrsohn  
David K. Meixell  
Dennis M. Merkel  
Daniel Molloy  
Edward G. Morris  
William F. Morse  
Steve F. Nikulich  
David W. Norton  
Gary S. Ott  
John W. Ozard  
David P. Paradowski  
Carol A. Person  
James W. Pierson Jr.  
Robert G. Popp  
David R. Rogemoser  
Susan M. Rogers

Mark D. Rosenthal  
Robert A. Schiller  
Ronald B. Skinner  
Salvatore Spuches  
Patrick J. Stokes  
Richard H. Tillman  
Robert Van Steen  
Joan M. Vertigan  
Laurence R. Wagner  
Paul J. Wenner  
David M. Wheeler  
Harry J. Wilber  
James R. Woehr  
Peter F. Woodward  
William E. Young  
Nick Yuschak Jr.  
Marc A. Zepetello  
Michael Zilnik  
David N. Ziska

**1978***Founder's Club*

Richard J. Watro

*President's Club*

Patricia D. Morrell

*Leader*

Jeffrey Mark Biasuzzi

*Centurion*

Michael P. Arsit  
Kraig M. Brigham  
Dennis E. Bryers  
David Thomas Ercolano  
James F. Gallagher  
Michael K. Gooden  
John W. Goodfellow  
Richard William Hansen  
Andrew D. Leonard  
Linda T. Newell  
James R. Piedmonte  
Matthew M. Saxe  
Glenn T. Ticehurst  
Kenneth J. Tiss  
David S. Wells

*Pioneer*

James Edward Bagley  
Mark E. Bakeman  
Randolph S. Baker  
Kenneth Walter Balling  
Archie T. Bernardi  
James R. Betar  
William L. Bradford  
George D. Braman  
Edward Albert Bregman

Jean M. Brown  
Richard M. Burke  
John David Butler  
James O. Calderwood  
Paul J. Carter  
Marianne J. Cirrito  
Diane M. Dale  
James J. Darragh  
Kevin F. Delaughter  
David V. Dobreski  
Joseph F. Dockwiler III  
William R. Dodge  
Peter Dunleavy  
Eugene Eusano  
Joyce Despard Feltz  
Peter R. Fernandez  
William E. Foxenberg  
John C. Gamble  
Jonathan D. Georges  
Frederick C. Gliesing  
Susan B. Gliesing  
Mark E. Grasman  
Peter H. Grill  
Michael R. Grumm  
Paul D. Hamann  
Josef E. Hansen  
Janice A. Hardin  
Robert W. Hargrove  
Francis M. Heffernan Jr.  
Philip G. Hembdt  
Thomas G. Herendeen III  
Philip J. Hertzog  
Victoria Drake Hibbard  
Karst R. Hoogeboom  
Anne M. Johnson  
Bruce R. Kaplan  
Joseph W. Kearney  
Gregory J. Kidd  
Janice LaChausse  
Walter W. Linck  
Michael M. Lutjen  
Bernard F. Maloy  
Charles R. Marcus  
David M. Mathien  
Yousuf A. Mehter  
Andrew W. Molodetz  
Karen Page  
Michael C. Patell Jr.  
Timothy P. Pepper  
Whitney F. Pettersen  
D. Andrew Pitz  
Dennis G. Rice  
Robert K. Rice  
Maria T. Rossi

Donald R. Ruch  
Keith W. Ryan  
Jack G. Saltes  
Daniel E. Schiffhauer  
Richard F. Scibior  
Anne Marie P. Sebesta  
Timothy P. Seeling  
Thomas D. Shearer  
Thomas R. Sheil  
Michael Walter Sherman  
Russell H. Storozow  
Laurie Sutherland-Nehring  
Tracey Reed Szajgin  
John T. Walkowiak  
Celeste Welty  
Tonda Thering West  
Wynn E. Witthans  
Linda S. Zaleon  
Mark A. Zawada

**1979***Leader*

Mark Bronon Bahosh  
Todd K. Parmington

*Pacesetter*

Douglas F. Brown  
Jesse M. Fink

*Centurion*

Dana A. Batley  
Michael P. Bontje  
Matthew J. Callahan  
William A. Carpenter  
Kenneth E. Coombs  
Dennis V. Jud  
Maryann Kaczmarek  
John Gridley King  
Ronald P. Kuracina  
Theresa A. Kuracina  
Teresa Novak Laundon  
Robert Maimone  
Peter M. Marchese  
Paul W. Maue  
Caroline S. Mercury  
Keith B. Reitter  
Mark R. Rosiek  
Daniel J. Stitzel

*Pioneer*

James R. Adams  
Nancy H. Allaire  
Stuart D. Appel  
James E. Bansbach  
Jeffrey L. Bernard  
Diane M. Bliss  
Margaret P. Bohn

*Alumni continued*

Peggy A. Brown  
 Jeff Buckley  
 Frank B. Burggraf  
 Robert F. Cassidy Jr.  
 Kevin B. Cavaioli  
 Todd Cedarholm  
 Robert W. Clement  
 Karen D. Coffey  
 Michael A. Corsello  
 Samuel P. Crane  
 Jeffery Donald Crook  
 Julie I. Eldridge  
 Frank M. Flack  
 Thomas R. Folts  
 Edward J. Frankoski  
 Geoffrey B. Gillett  
 Gary R. Goff  
 Frank F. Gordnier Jr.  
 David S. Hamling  
 Daniel J. Hansen  
 Dwight A. Harrienger  
 Gary R. Hilderbrand  
 Ann Kenny Iannettoni  
 Wendy Jo Johnson  
 Mary O'Leary  
 Kiernan  
 Russell Lea  
 Christopher J. Luley  
 Kathy L. Lyons-Burke  
 Thomas A. Maleike  
 Andrea G. Martin  
 David E. Milne  
 William B. Moore Jr.  
 Fred Munk  
 James Christian  
 Nielsen  
 Charles T. Nightingale  
 Celia Petersen  
 M. Keith Redenbaugh  
 Robert Rieger  
 Robert R. Rooney  
 William G. Schwartz  
 Frederick Scott Seely  
 Pamela J. Sevy  
 Katherine Ann Sise  
 Robert G. Sliwinski  
 Karen Greene  
 Swensen  
 Linda F. Tambini  
 Ronald C. Tetelman  
 Matthew G. Titus  
 Stephanie Ann Wald  
 William F. Wilson  
 Roberta Needham  
 Woodburn  
 Clifford C. Wray Jr.

**1980***Pacesetter*

James C. Richburg  
 Margaret L. Shavaliar

*Centurion*

Stephen William  
 Anagnost  
 Lynn Erla Beegle  
 Richard Russell Cain  
 Timothy Nelson  
 Delorm  
 Tara M. Goldberg  
 Janet W. Jackowski  
 James Michael Jonza  
 Regina Watson  
 Loewenstein  
 Elizabeth Lonoff  
 Margaret G.  
 Redinbaugh  
 John R. Roman  
 Christopher L. Simard  
 Robert S. Stegemann  
 Peter H. Triandafillou  
 Theresa Triandafillou

*Pioneer*

Stephen J. Aiken  
 Kristin Andres  
 Marc D. Ankerud  
 Mark Paul Austin  
 William Berliner  
 Darrell R. Bird  
 Daniel L. Bishop  
 Richard T. Blackford  
 Eva F. Briggs  
 Kristin R. Brodie  
 Clarissa A. Caccavano  
 Lawrence M.  
 Callander  
 Robert J. Canora  
 Kathleen Leonard  
 Capella  
 Kenneth D. Carlson  
 Camille Louise Cesari  
 Laurence A. Clement Jr.  
 James L. Contino  
 August J. Cook Jr  
 Charles E. Coonley  
 Gary J. Couch  
 Clifford D. Davis  
 Robert J. Dee  
 Anne Elizabeth  
 Dorrance  
 Andrea Dawn Fish  
 David M. Flynn  
 Stephen Francis  
 Galloway

Judith Ann Ghosin  
 A. Eric Gross Jr.  
 Paul M. Gugg  
 Michael Emery  
 Hanscom  
 David A. Harding  
 John P. Hayden  
 Barbara Baranauskas  
 Hoefs  
 Matthew William  
 Jacobs  
 John P. Kane  
 Jonathan Kanter  
 Timothy S. Kelly  
 Stuart Kitain  
 Moira A. Laughlin  
 David Brian Lavine  
 Frank David Lehman  
 Barbara Holter  
 Maguire  
 Kenneth R. Markert  
 Keith Richard  
 Maurice  
 Douglas C. McCord  
 Timothy Maurice  
 McFarland  
 Elizabeth A. McGrath  
 David Kenneth  
 Munson  
 Nicholas Nicholsky  
 Raymond John Nolan  
 Irene Marx Olson  
 Michael J. Palumbo  
 Ralph E. Parkes Jr.  
 Walter Peter  
 Pawlowski  
 Mark Edward Ramos  
 Debra H. Rogers  
 Gail Gmoser Romano  
 Thomas Gordon  
 Rozwod  
 Virginia Maria  
 Scheffer  
 Joseph R. Scudlark  
 John Thomas Shields  
 Alan Philip Smithling  
 Michael Elliot Spitzer  
 Michael Joel Stein  
 Joseph R. Taormina  
 Wayne Alan Tripp  
 Douglas Arthur Tusch  
 Mary Beth Wolff  
 Alison F. Wood  
 Roy P. Zahnleuter

**1981***President's Club*

Louis Charles Fusco  
 Jeffrey J. Morrell

*Leader*

Jeffrey Taber McGrew

*Pacesetter*

Joan M. Brennan  
 John R. Merten  
 Timothy Spry

*Centurion*

Bruce William  
 Bandorick  
 Jerry Collins  
 Susan A. Coroneos  
 Brian L. Cypher  
 Robert Danoff  
 Stephen E. Duesler  
 Daniel T. Fitts  
 Patricia Mason Fritz  
 Steven W. Katz  
 Manfred Owe  
 Debra Catlin Pagano  
 James R. Raydo  
 Joseph A. Rittberg  
 Josephine A. Scalia

*Pioneer*

David L. Anderson  
 John P. Ashworth  
 Paul David Baird  
 Bruce Walter Ball  
 Jeffrey Walter Beeman  
 Donald John Belger  
 Jack Berte  
 Steven D. Booth  
 Rodney Leon Brown  
 Ellen Roth Campbell  
 Lisa Marie  
 Cannellos-Weber  
 Lee Gradischer  
 Carbonneau  
 Charles John Carter  
 Brian David Chipman  
 Ann E. Cohn  
 Kathleen M. Collins  
 Charles Douglas  
 Cranston  
 Ferdinand A.  
 Del Rosario  
 Daniel Joseph Derleth  
 Philip Destefano  
 Leonard C. Ditomaso  
 Karl W. Doerner  
 Martin John Duffany  
 Steven M. Faigen  
 Kristine Fabbiosi Fay  
 William M. Ferretti  
 James C. Flint  
 Margaret A. Fusco  
 James T. Gebhardt  
 Barry J. Greenberg  
 Rebecca Shedd  
 Greenberg  
 Michael Grizenko  
 John S. Haederle  
 Thomas Francis Hart Jr.  
 Martin R. Hartmann  
 Thomas P. Harvey  
 Stephen F. Hoffmann  
 W. j15  
 Elliott Horner  
 Tim H. Hsu  
 Sheng Hsin Hu  
 Richard K. Hubbard  
 Charles William  
 Jackowski  
 Ralph Thomas  
 Keating  
 Edward L. Kern  
 Lawrence Michael  
 Kroon  
 Andrea Daquila  
 Langhauser  
 Nancy Anne Lenz  
 Susan Dinero  
 Lockwood  
 Alton Perry  
 MacDonald Jr.  
 Joseph J. Martens  
 Jane Elizabeth  
 Mudano  
 Tim J. Murphy  
 Julie Vasbinder Nelson  
 Joan B. Nichols  
 Harold Edward Oot  
 Liz O'Rourke  
 Raymon Douglas  
 Petrie  
 Thomas W. Phillips  
 Marian C. Poczobutt  
 Michael A. Principe  
 Brian Joseph Remus  
 Brian David Riley  
 Kelly Smith Rohrer  
 Alice M. Sikorski  
 Clifford Peter Smalley  
 Robert L. Stolz  
 Leslie Joann  
 Surprenant  
 Robert John Thieke  
 Mark David Thomson  
 David James Ulm

Timothy Martin  
 Wallmeyer  
 Michael T. Walsh  
 John Robert Werther  
 Henry Booth  
 Wightman III  
 Michael J. Wilke  
 Scott Alan Willis  
 Bonnie S. Young  
 Jon Eugene Zufelt

**1982***Leader*

Keith Morris

*Pacesetter*

John M. Adams  
 Stephan Timothy  
 Murphy  
 Scott J. Wheeler

*Centurion*

Eric N. Anderson  
 Susan Fitzgerald  
 Arling  
 David J. Civic  
 Mary W. Clements  
 Robert Edward  
 Deforest  
 Daryle H. Fish  
 Angela T. Flynn  
 David Brian Glick  
 Mike Benedict Gracz  
 William Francis  
 Hoffmann  
 Charles Powell  
 Robinson  
 John Todd Sarraf  
 Peter John Sinclair  
 David William Snyder  
 Sandra Ann Stage  
 Ruth M. Sundstrom  
 James Louis Thorsen  
 Thomas M. Toal  
 Cynthia Marie Wood

*Pioneer*

Susan E. Anagnost  
 Judy A. Arvan  
 Barry P. Baldigo  
 Michael S. Barr  
 John K. Bartow Jr.  
 Frank Gerard  
 Benenati  
 Dudley Clark Breed  
 Jeremiah B. Brophy  
 Donald C. Castor  
 Stephen Charles  
 Catherman

*Alumni continued*

|                          |                           |                       |                       |                         |                       |
|--------------------------|---------------------------|-----------------------|-----------------------|-------------------------|-----------------------|
| Nancy V. Cook            | Abby R. Rudin             | Peter James Jelinek   | <i>Pioneer</i>        | Robert Joseph           | Robert H. Jones       |
| Daniel Cornell           | Nancy Binder Selover      | William George Kent   | Lisa Ann Arbucci      | Company                 | Eric M. Kasper        |
| Susan Marie Cox          | Horace B. Shaw III        | Nelson Paul Kirchner  | Laurie Grosman        | Lorraine Carter         | Paul R. Knittel       |
| Gerardo L. Cumpiano      | Randall Stewart Slade     | Paul Joseph Klein     | Bailey                | Constance L. Coggins    | Gregory Francis       |
| Joseph Francis Dadey     | Kelly Wallace Stang       | Susan Amelia          | Paul Michael          | Suzanne Ackerman        | Krasnai               |
| Therese M. Dale          | Kenneth Jay Stein         | Koperczak             | Bensadoun             | Elmer                   | Mark Charles Kuehn    |
| Dawn R. Dana             | Dianne C. Stephan         | Peter Ross Krinsky    | Robert Michael        | James Joseph Galvin Jr. | Steve F. Lachacz      |
| William K. Darrow        | Dale J. Sweet             | Robin Viola Kruse     | Boland                | Elaine Gerber           | John C. Lachance      |
| Elizabeth Ann Daut       | David P. Tindall Jr.      | Willie J. Lau         | Robert B. Buerger     | David John Gitto        | David John Lee        |
| Ellen M. DeMaria         | Mark Stephen Ward         | Ellen Rom Manno       | Stephen John Capella  | Brad T. Gydesen         | Gary Anthony Lipp     |
| Thomas Gage              | Stephen Tim Webber        | Salvatore Anthony     | Jocelyn A.            | Ronald S. Headrick      | Brian Edward Maas     |
| Eselgroth                | Carol Cohen               | Masullo               | Cole-Calkins          | Jeffrey Andrew Kane     | John Patrick Martin   |
| Patrick John Eves        | Weitzman                  | John Edgar            | Mark Edward           | Patrick William         | Thomas J. Martin      |
| Jeffrey Alan Ferguson    | Diane M. Wheelock         | McIntosh III          | Culligan              | Keenan                  | Duane Roger           |
| Robert Urban Fischer Jr. | Gary Daniel Wilson        | Thomas Flynn Murray   | Lori Garbus Doscher   | Ann Elizabeth Knuth     | Palmateer             |
| Mark Flory               | <b>1983</b>               | Kenneth James         | Jeffrey Paul Ebert    | Mike S. Kruse           | Brian D. Peck         |
| Peter J. Gabrielsen      | <i>Leader</i>             | Nersesian             | James Michael Fogg    | Kevin Gerard Mangan     | Kathleen E. Quinn     |
| Suzanne Gaynor           | Sarah Wiles               | David Hugh            | William James         | Nelson C. Mount III     | Timothy J. Raichel    |
| Peter Bennett Gradoni    | <i>Centurion</i>          | O'Connor              | Giblin II             | C. David Niles          | Daniel Aaron Reeder   |
| Alan J. Grant            | Mark B. David             | Debra Vaine Oglesby   | Tracy A. Gingrich     | Christina C. Palmero    | Wendi M. Richards     |
| Kathryn J. Greenwald     | John Arthur Gibbs         | Charles Edward        | Mark B. Hickein       | Renee A. Parsons        | Elizabeth S. Rogan    |
| William R. Haines        | Holly Monica Harper       | Parkes Jr.            | Jeffrey Paul Horowitz | Elizabeth E. Pretel     | Joseph Alex Santonato |
| Kenneth T. Hart Jr.      | Maria Theresa             | Gregg Alan Rabasco    | Mark Anthony          | Michael Robert Ragan    | Kit Schwendler        |
| Richard F. Helm          | Lombardi                  | Ronald C. Rote        | Johnson               | Robert James Schug      | William C. Thayer     |
| Kenneth P. Hotopp        | Stephanie A.              | Susan L. Stout        | Eric J. Jokela        | Thomas Robert Shone     | Michael D. Wells      |
| Walter John              | Masaryk-Morris            | James E. Strick       | Eric John Lauber      | Laurance S. Torok       | Sandra G. Wheeler     |
| Hovendon                 | Alfred Miesemer           | William Lyle          | Sheila M. MacDuff     | Michael James Ward      | Christopher John Will |
| Charles D. Hyams         | Laurence Eric Miner       | Teamerson             | Andrea M. Maxson      | Jim H. Williams         | Jennifer A. Williams  |
| C. Michael Ingersoll     | Robert P. Rasmussen       | Richard M. Teck       | William J. Morrow     | Roger J. Wolfe          | Elaine Patricia       |
| Eric Campbell            | David H. Rockwood         | Eileen Marie Travis   | Daryl John Odhner     | <b>1986</b>             | Winslow               |
| Jespersen                | Joseph Anthony            | Teresa Brockett Tyoe  | Peter Andrew          | <i>Pacesetter</i>       | <b>1987</b>           |
| Christine Urda Kane      | Scarsella                 | Glenn Wallis          | Palmiotto             | Preston M. Bruenn       | <i>Leader</i>         |
| Mark J. Kopchak          | Stephen Tim Schantz       | David Glen Ward       | Doreen Peters         | David C. O'Donnell      | Jeannine Marie Walls  |
| Patricia D. Kot          | James M. Sheibley         | <b>1984</b>           | Gail Peterson Sack    | Karen A. Plumley        | <i>Pacesetter</i>     |
| Timothy Alan             | Susan L. Stout            | <i>Founder's Club</i> | James Eugene          | <i>Centurion</i>        | Karen Judith Maher    |
| Kruppenbacher            | <i>Pioneer</i>            | Chin S. Yang          | Skorulski             | Daniel W. Clayton       | <i>Centurion</i>      |
| Kurt M. Lannon           | Carol Wagstaff Adair      | <i>Leader</i>         | L. Stephen Wilklow    | Mario A. Fischetti      | Susan Ellen Brewster  |
| Alan David Lovejoy       | Iver M. Anderson          | James William         | David Tracy Winchell  | Charles Mason           | Steven Scott Burd     |
| William Edward Lupo      | John I. Anderson          | Jackowski             | Richard Andrew        | Gaffney                 | Robert E. Deyle       |
| William Burriss          | Scott W. Blakely          | Robert E. Unsworth    | Zalucki               | Debora Schwartz         | Paul C. Graver        |
| Mahony                   | Anthony L. Bonagura       | <i>Pacesetter</i>     | <b>1985</b>           | <i>Pioneer</i>          | Caroline M. Kiss      |
| James R. Mallette        | Paula Anne Caron          | Kenneth B. Adams      | <i>Leader</i>         | Donna L. Alker          | Joel M. Stopha        |
| Paul W. McCoy            | Frances Antonia           | <i>Centurion</i>      | Eric M. Van Rooy      | Deborah L. Carbin       | <i>Pioneer</i>        |
| Jane E. McIlvain         | Chester                   | Barbara B. Beall      | <i>Pacesetter</i>     | Anthony J. Carmeli      | Lee R. Bresmon        |
| Theresa M. Mercier       | Peter Raymond Daly        | Christopher J. Cawley | John Paul Haas        | Steven Robert Chaffee   | John M. Clancy        |
| Ronald R. Meyer          | Joanne O. Dickens         | David Dale Dreisbach  | Craig Arthur Miller   | Terrence Edward         | Susan Sullivan        |
| Gregory Owens            | Lois A. Eckstrom          | Nancy J. Ferlow       | Brian Wester          | Croad Jr.               | Dougherty             |
| Richard P. Pauli         | Daniel Joseph Empie       | Brian Thomas          | <i>Centurion</i>      | Christopher A. Dadd     | Diane M. Kuehn        |
| Rick Percoco             | Rodrick James Finley      | Fitzgerald            | Robert J. Weireter    | Charlotte L. Demers     | Barbara Anne Lancour  |
| Thomas J. Powers         | Katharine M. Follot-      | John A. Janson        | Robert Michael        | Jane Gregory            | Ron Leonard           |
| Karen Elizabeth          | Layton                    | Robert Cyrus Reville  | Zentner               | Frampton                | Jeffrey L. Nugent     |
| Rasmussen                | Adelaida Q. Garrett       | Carmen Dean Spara     | <i>Pioneer</i>        | Blake Weatherby         | Scott Edward Palmer   |
| Karl Martin Richard      | Kathryn Strickland        | Michael Charles       | Andrew P. Bader       | Fulton                  | Douglas R. Pearsall   |
| Mark D. Ricker           | Hanson                    | Squires               | David Joseph Ball     | Linda M. Garrett        | Rosetta Reid Railey   |
| Glen William Roberts     | Franklin John Hoerner Jr. | Holly Veix Williams   | Glenn Todd Bingham    | Linda I. Gibbs          | Nicole Mongeau Rudd   |
| Mark Dennis Rogers       | David John Jacobs         |                       | Kevin Terence Brady   | Scott Raymond Hall      | Anne Bregy Saltman    |
| Jane O. Rowan            |                           |                       |                       |                         |                       |

*Alumni continued*

Robert W. Scammell  
 Amelia Zamoiski  
 Swiernik  
 Ann M. Tarbet

**1988**

*Centurion*

Kimberly C. Bailey  
 Patrick J. Sullivan

*Pioneer*

Joanne B. Arany  
 Jeffery Leon Austin  
 Steven E. Barry  
 Keith Raymond  
 Beaver  
 Linda M. Burke  
 Clifford A. Conklin  
 Jacqueline Irene  
 Criddle  
 Caryn Ann Crook  
 Stephen Joseph Feeney  
 Timothy James  
 Fogarty  
 Paul J. Hess

Leeann Karen Huey  
 Daniel John Ingraham  
 Edward G. Keplinger  
 John M. Keyes  
 Mark C. Kozsan  
 Dina W. Li  
 Joseph M. Lukasik  
 James William Matzat  
 Richard Wayne  
 McCormick  
 David J. Nicholson Jr.  
 Ronald Edward Pfuhl  
 Kenneth J. Popino  
 Robert William  
 Ronnow  
 Todd D. Rothermel  
 Paul Richard  
 Ruschmeyer  
 David B. Shelmidine  
 Ellyn K. Tighe  
 Steven Michael  
 Tingley  
 Hollybeth K. Welsh

**1989**

*Pacesetter*

Robin Ann  
 Summerhill

*Centurion*

Peter Xavier  
 Boullianne  
 Jeffrey Joseph Dubis

Jonathan Edmans  
 Wieslaw W. Gondek  
 Jonathan G. Kennen  
 Gavin P.

Knickerbocker  
 Eric William Webster

*Pioneer*

Diana G. Carter  
 Deann Lynn  
 Cummings  
 Yadollah Delaviz  
 Kevin M. Draper  
 Stephen David Gettle  
 Jeffrey Alan Gratzner  
 John Mark Judge  
 Betsy Anne Keplinger  
 Alix V. Krueger  
 Tanya Dawn McIntire  
 Todd A. Sinander  
 Brent James Speicher  
 Lisa A. Truffelli  
 Eric Andrew  
 Valckenaere

**1990**

*Centurion*

Daniel J. Roock  
 Janet Faye Sager

*Pioneer*

James B. Alpin Jr.  
 Kris E. Anderson  
 Clyde H. Burnsworth  
 Karen Jeanne Cronk  
 Christina M. Fox  
 Christopher Hugh  
 Fritz  
 James Scott Ganter  
 Stephanie Renee Gash  
 Frederick G.

Goutremout Jr.  
 Richard E. Harrington  
 Andrew W. Hartman  
 David A. Hawke  
 Gene Ben Herskovics  
 Peter J. Jasak  
 James M. Kubiak  
 Rei Liu  
 Sean E. McGlynn  
 Peter D. Nicholas  
 Sandra Palmer  
 Michael P. Radner  
 Janine M. Saatman

Eugene John  
 Schwarzrock  
 Ken Tousley Jr.  
 Pollyanna L. Williams

Edward L. Young  
 Daniel M. Zajac

**1991**

*Centurion*

Matthew G. Barbalich  
 John M. Farrell  
 Joseph D. Nolan Jr.  
 Alan D. Rice

*Pioneer*

Ronald T. Aiello  
 Kenneth B. Bowman  
 Bridget E. Brown  
 Glynnis N. Collins  
 Mary Ellen DeForest  
 Tracy H.  
 Derrenbacher  
 Margaret Pasek  
 Engasser  
 Richard William  
 Evans Jr.  
 Robert Patrick Farrell  
 Caryl L. Fish  
 Andrew Peter  
 Geremski  
 Cynthia B. Kirby  
 William Gerard  
 Kuhne  
 Edward J. Marsh  
 Wilfred Ortiz  
 Taylor Hanks Sims  
 Steven C. Stedman  
 David Nichols Suarez  
 Jeanne A. Suttie  
 Clemente R. Toffolo  
 Rachel M.  
 Woodworth

**1992**

*President's Club*

Gloria Stone Plottel

*Leader*

Jeffrey M. Speich

*Centurion*

Tammi B. Aiken  
 Sandra E. Bonanno  
 John James La Gorga  
 Terry Alton Mundy  
 Laurence Joseph Rys  
 Stephen P. Tyksinski  
 Guangbin Zhou

*Pioneer*

Eric L. Ames  
 Robert Michael  
 Cherevko  
 John Charles De Feo

Curtis Alf Ecklund Jr.  
 Shawn Philip Gardner  
 Steven P. Holbrook  
 Sean S. Jancski  
 Thomas W. Karig  
 Lisa M. Lewis  
 Lydia M.

Lewis-Walsh  
 Michael H. Long  
 Sean N. Macnintch  
 James M. Mituzas  
 Dennis John O'Hagan  
 Alisa Mary Otteni  
 Michael J. Palenscar Jr.  
 Timothy H. Ramsey  
 Sharlene M.  
 Sanderson  
 Lewis J. Staats  
 Patricia B. Stock  
 Jeffrey W. Tanner  
 Steven M. Taylor  
 Michele Terando

**1993**

*Centurion*

Michael Robert  
 Emery

*Pioneer*

Peter Francis Auth  
 Jeanne Brutman-Faria  
 T. Patrick Burke  
 Chris H. Gardner  
 Douglas J. Grady  
 Scott D. Klopfer  
 William Christopher  
 LaRose  
 Michael Anthony  
 Lumbis  
 Dean Leonard Moore  
 Nanette S. Nelson  
 Theodore David  
 Otteni  
 James Anthony  
 Palumbo  
 Ronald Robert Pernisi  
 Heidi Rieckermann  
 Elizabeth J. Ross  
 Mark R. Scallion  
 Timothy Severance  
 David James Snyder  
 John D. Solan Jr.  
 Kal Szigeti

**1994**

*Centurion*

Patrick Wayne Frenyca



*Scholarships*

To ensure the tradition of academic excellence continues at ESF, the college must continue to attract dedicated students to our campus. One way this is done is through the numerous scholarships managed by the Foundation.

The college has 250 named scholarships that provide financial assistance to approximately 300 graduate and undergraduate students. More than \$400,000 in scholarships were awarded in 2000-2001.

The Foundation also provides financial support for lectureships, equipment and special activities at Moon Library. Last year, that backing totaled \$275,000.

This financial assistance enhances our students' college experiences ensuring they not only have the funds necessary to continue their education, but that when they arrive, they are met with state-of-the-art equipment, experts in various fields of study and an extensive collection of research materials at their disposal.



*Alumni continued*

|  |  |   |   |   |   |
|--|--|---|---|---|---|
| Michael Thomas<br>Goergen Jr.<br>Paul Joseph Gryga<br>Deborah Dawn<br>Schubach   | <b>1995</b><br><i>Leader</i><br>David Lee Ebberts<br><i>Centurion</i><br>Colin David<br>Henderson<br>Brenda McBride<br>Martin<br>Richard William Sage  | <b>1996</b><br><i>Pacesetter</i><br>Raymond H. Apy Jr.<br><i>Centurion</i><br>Rorie Coleen Doty<br>Timothy Patrick Lago<br>Brian Christopher<br>Lembke<br>Barbara Ann<br>O'Dwyer  | Jonathan Charles<br>Pawlak<br>Michael J. Reed<br>Peter Scott Smith<br>Bruce D. Willett  | <b>1998</b><br><i>Centurion</i><br>Lindi J. Quackenbush<br><i>Pioneer</i><br>Jill Havens<br>Marcy Ann Layman<br>Carolyn Pike<br>Tyrone Barrett<br>Rodriguez<br>Frank Patrick<br>Sidari III  | Katherine Day<br>Hargrave<br>Michael R. McHale<br>Brian Vincent<br>Monterosso<br>William Kalil<br>Nasser III<br>Tuan Anh Nguyen<br>Linda Diane Polin<br>Toni Marie Pugliano<br>Kevin David Riordan<br>Scott Michael<br>Sincebaugh<br>Jeremy Adrian Stidd<br>Jeffrey Jerome Sturek<br>John T. Tangen<br>Albert Robert Thalen<br>Benjamin Charles<br>Thomas |
| <i>Pioneer</i><br>James Burrows<br>Avallone<br>Sean Michael Brogan<br>Bernard R. Buff Jr.<br>Daniel Joseph<br>Costello<br>Jeanette Dadusc<br>Stefan George<br>Dirghalli<br>Kevin Patrick Hynes<br>Marcy A. Neville<br>Katherine Terry<br>Radomski<br>Steven Louis<br>Ragonese<br>Leah E. Reutlinger<br>Steven J. Rolfe<br>Jennifer Jean Schroeck<br>Jonathan Glen<br>Shoulta<br>David L. Sturges<br>Howard Weinberg<br>Rory Abbott<br>Woodmansee | <i>Pioneer</i><br>Christopher Gregg<br>Connelly<br>Jason Robert Dredger<br>Christine E. Earley<br>Craig C. Fauler<br>Dale Edmund Haas<br>Myrna H. Hall<br>Brian W. Hayduk<br>Jose Iribarne<br>Elizabeth Joerger<br>Barry Frank<br>Markowitz<br>Susan Morgan<br>Allison Jean Nygard<br>Daniel D. Powers<br>Gabriel Paul Roussere<br>Eric James Shaw<br>Randee Cheryl<br>Stewart<br>Jonathan Melvin<br>VanDelinder | <b>1997</b><br><i>Pacesetter</i><br>Stephanie Jean Gomon<br><i>Centurion</i><br>William Vincent<br>Benzel<br><i>Pioneer</i><br>Brett Klem<br>Armstrong<br>Kevin Brian Hutton<br>Keith Malcolm<br>Lewinter<br>Richard P. McDonald<br>Heather Anne<br>Moberly<br>Bonnie B. Parton<br>Katherine Susan<br>Pawlak<br>Gregory Paul Pulver<br>Jonathan David<br>Roppel<br>Christopher Michael<br>Scully<br>Sandra Ann Wetmiller<br>Ben Michael Zomer | <b>1997</b><br><i>Pacesetter</i><br>Stephanie Jean Gomon<br><i>Centurion</i><br>William Vincent<br>Benzel<br><i>Pioneer</i><br>Brett Klem<br>Armstrong<br>Kevin Brian Hutton<br>Keith Malcolm<br>Lewinter<br>Richard P. McDonald<br>Heather Anne<br>Moberly<br>Bonnie B. Parton<br>Katherine Susan<br>Pawlak<br>Gregory Paul Pulver<br>Jonathan David<br>Roppel<br>Christopher Michael<br>Scully<br>Sandra Ann Wetmiller<br>Ben Michael Zomer | <b>1999</b><br><i>Centurion</i><br>Dane Stefan<br>Kwiatkowski<br>Paul A. Yonge<br><i>Pioneer</i><br>Erica Marlene<br>Anderson<br>Kyle W. Buelow<br>Clark Eldon Burdick<br>Lynn M. Christenson<br>John F. Connor<br>Andrew Marc<br>DeMaio<br>Michael A. Farina<br>Katherine Marie Fell<br>Kerry Marie Foley<br>Christina Ann Francis | 2000<br><i>Pioneer</i><br>Aimee Delach<br>Brian Peter<br>Fitzgerald Jr.<br>Robert J. Hetzler<br>Rick Daniel Kriner<br>Paul Edward O'Neil Jr.<br>Scott Allen Tyler   |

*Corporations*

|   |   |   |   |
|---|---|---|---|
| <i>President's Club</i><br>ABB, Inc.<br>AES Engineered Systems<br>Albany International Corporation<br>Allied Paper Sales<br>American Tissue Corporation<br>Appleton Papers Inc.<br>Asten Johnson<br>Bay Pond Condominium<br>BE & K Inc.<br>Blasland, Bouck & Lee, Inc.<br>Bond, Schoeneck & King, LLP<br>Bowater, Incorporated<br>Bristol-Myers Squibb Company<br>Buckman Laboratories, Inc.<br>Burrows Paper Corporation<br>Central National-Gottesman Inc.<br>Dean Witter Reynolds, Inc.<br>The Dow Chemical Company<br>Foundation<br>Eastman Kodak Company | Engelhard Corporation<br>ENSR International<br>Garden State Paper Company<br>Geo Specialty Chemicals<br>Georgia-Pacific Corporation<br>Hancock & Estabrook, LLP<br>Hollingsworth & Vose Company<br>Honeywell Inc.<br>International Paper Company<br>Foundation<br>J.M. Huber Corporation<br>Jacobs Engineering<br>Marsellus Casket Company<br>Mead Corporation<br>The Merck Company Foundation<br>Metso Paper Inc.<br>Mohawk Paper Mills, Inc.<br>Nalco Chemical Company<br>National Starch & Chemical<br>Company<br>The Newark Group | The Niagara Mohawk Foundation<br>OMYA, Inc.<br>Price Waterhouse Coopers, LLP<br>The Prudential Foundation<br>Seaman Timber Company<br>Southern Container Corporation<br>Specialty Minerals<br>Voith Sulzer Paper Technology<br>Werner Company<br>Westvaco Foundation<br>Weyerhaeuser Company<br>Foundation<br><i>Leader</i><br>ABB Process Automation<br>Ahn Associates<br>Alloy Cladding Company Inc.<br>Alstom Power Inc.<br>American Home Products<br>Corporation<br>BASF Corporation<br>Beitzel Corporation | Carl Belt Inc.<br>Chase Manhattan Foundation<br>Equipment & Controls, Inc.<br>FMC Foundation<br>Frischkorn, Inc.<br>General Mills Foundation<br>GL&V Pulp and Paper Group<br>Industrial Pump Service of NC<br>J.P. Morgan & Co. Inc.<br>Jamesbury Corporation<br>McJunkin Corporation<br>Millennium Inorganic Chemicals<br>MPW Industrial Services<br>National Wire Fabric<br>SHW, Inc.<br>Smith Transportation Inc.<br>Sonoco Products Company<br>Source W<br>Sterling Pulp Chemicals Ltd.<br>US Bancorp<br>Valmet |
|---|---|---|---|

## Corporations continued

|                                     |                                       |                               |                                |
|-------------------------------------|---------------------------------------|-------------------------------|--------------------------------|
| Van Waters & Rogxers Inc.           | Eastern Research Services Inc.        | Textron, Inc.                 | Honeywell International        |
| Walter N. Yoder & Sons Inc.         | Equiva Services LLC                   | United Technologies           | HSBC Bank USA                  |
| <i>Pacesetter</i>                   | Ford Motor Company Fund               | Willamette Industries         | ITT Industries                 |
| Anheuser-Busch Companies            | GE Fund                               | <i>Pioneer</i>                | Johnson Controls Foundation    |
| The Johnson Corporation             | Georgia-Pacific Corporation           | Akzo Chemicals, America       | Monsanto Company               |
| Motion Industries, Inc.             | Intel Foundation                      | Amica Companies Foundation    | MONY Foundation                |
| The Sherwin-Williams Foundation     | Kimberly-Clark Corporation            | Armstrong World Industries    | Mutual of New York             |
| C.E. Thurston & Sons Inc.           | Kmart Corporation                     | AT&T Foundation               | Nortel Networks                |
| Tricon Metals & Service             | Lockheed Martin Corporation           | BP America, Inc.              | NYS Electric & Gas Corporation |
| <i>Centurion</i>                    | Max Capital                           | Buchanan Lumber Company       | Pfizer, Inc.                   |
| Adobe Systems Inc.                  | Minerals Technologies Inc.            | Compaq Computer Corporation   | Potlatch Foundation            |
| Alcoa Foundation                    | Mobil Foundation                      | Consolidated Edison Company   | PPG Industries Foundation      |
| Boeing Gift Matching Program        | Motorola Foundation                   | Consolidated Electrical       | The Quaker Oats Foundation     |
| C & W Sales, Inc.                   | NYSEG Corporation                     | Distributors, Inc.            | Rohm & Haas                    |
| Champion International Corporation  | P.H. Glatfelter Company               | Cooper Industries             | 3Com Corporation               |
| Consolidated Papers Foundation Inc. | The Procter & Gamble Fund             | GPU Service                   | Xerox Corporation              |
|                                     | Sealed Air Corporation                | Hallmark Corporate Foundation |                                |
|                                     | Swiss Reinsurance America Corporation | Hercules, Inc.                |                                |

## Faculty and Staff

|                                 |                          |                          |                         |                        |                              |
|---------------------------------|--------------------------|--------------------------|-------------------------|------------------------|------------------------------|
| <i>Founder's Club</i>           | James M. Heffernan       | Chad P. Dawson '83       | David L. VanTress '76   | Allan P. Drew          | Barbara L. Nelson            |
| Maurice M. Alexander '40        | Paul F. Hopkins '80      | Arthur R. Eschner '50    | John E. View            | Michael J. Duggin      | Roger L. Nissen Jr.          |
| Carlton W. Dence '47            | Robert T. LaLonde        | Mark P. Fennessy         | Daniel C. Walton '62    | Claire B. Dunn         | Flora Nyland                 |
| John B. Simeone                 | Jeri Lynn Smith          | James M. Hassett         | Robert G. Werner        | Theodore A. Endreny    | James F. Palmer              |
| <i>President's Club</i>         | <i>Pacesetter</i>        | Lee P. Herrington        | <i>Pioneer</i>          | Teri E. Frese          | Francine Perri               |
| William R. Bentley              | Cheryl S. Doble '86      | Mary O. Hooven           | Douglas C. Allen        | Myrna H. Hall '95      | William A. Powell            |
| Peter E. Black                  | Elizabeth A. Elkins      | Edwin H. Ketchledge '49  | Susan E. Anagnost '82   | Barbara Hasenstab      | Julie Rawls White            |
| Emanuel J. Carter Jr.           | Robert H. Frey           | Robert S. North          | Caroline B. Bailey      | John P. Hassett        | Dudley J. Raynal             |
| George W. Curry                 | Brenda T. Greenfield     | Mary C. O'Halloran       | Judy A. Barton          | Robin E. Hoffman '82   | Kevin J. Reynolds            |
| Allen R. Lewis                  | Eric J. Greenfield       | Lindi J. Quackenbush '98 | Jerome Brezner          | Reuben Hudson          | Daniel J. Robison '82        |
| Cornelius B. Murphy Jr.         | Robert C. Koepper        | Robert G. Reimann '54    | Robert H. Brock Jr. '58 | Dianne M. Juchimek     | Conrad Schuerch              |
| Harrison H. Payne '50           | George H. Kyanka         | Norman A. Richards '57   | William M. Burry '74    | D. Steven Keller '96   | Richard A. Schwab '69        |
| The Estate of Leroy C. Stegeman | Robert W. Malsheimer '86 | Richard W. Sage Jr. '66  | Hugh O. Canham '60      | David J. Kieber        | Horace B. Shaw III '82       |
| Chun J. Wang                    | Robert M. Silverstein    | Anatole Sarko '66        | Gary E. Colella         | Charles N. Kroll       | Arthur J. Stipanovic '74     |
| Ross S. Whaley                  | William B. Smith '76     | Thomas O. Slocum         | Christine J. Crysler    | Christine A. Langlois  | Deborah A. Storrings         |
| <i>Leader</i>                   | Connie S. Webb           | Lawrence B. Smart        | Douglas J. Daley '82    | Charles N. Lee '49     | Kathleen A. Stribley         |
| David G. Anderson '50           | <i>Centurion</i>         | Johannes Smid '57        | Craig J. Davis          | Garrison B. Lewis      | Stuart W. Tanenbaum          |
| Miklos A. Gratzner              | Wilfred A. Cote Jr. '58  | Kenneth J. Tiss '78      | Charlotte L. Demers '86 | Philip Luner           | Larry W. VanDruff            |
| Richard S. Hawks '72            | Justin F. Culkowski '73  | William P. Tully         | M. Elen Deming          | Valerie A. Luzadis '97 | Christopher L. Westbrook '73 |
|                                 |                          |                          | Danette J. Desimone     | Richard Mark '50       | Shirley L. Wilbur            |
|                                 |                          |                          |                         | Myron J. Mitchell      | Patricia D. Williams         |

## Organizations

|  |   |
|--|---|
| <i>President's Club</i>  | Central New York Region of the American Society for Photogrammetry & Remote Sensing |
| Allegheny Foothills Chapter of the New York Forest Owners' Association | Western Finger Lakes Chapter of the New York Forest Owners' Association             |
| ESF Alumni Association   | <i>Centurion</i>  |
| National Association of Paperstock Women                               | Onondaga Audubon Society  |
| <i>Leader</i>  | Tug Hill Resources (THRIFT)   |
| American Rock Art Research Association                                 | <i>Pioneer</i>  |
| ASLA, NY Upstate Chapter   | City View Garden Club   |
| Capital District Chapter of the New York Forest Owners' Association    |   |

## Other Foundations

|  |
|--|
| <i>President's Club</i>                        |
| Bartlett Tree Foundation, Inc.                 |
| Henry H. Buckley Foundation                    |
| Conservation, Food and Health Foundation, Inc. |
| William L. Cox Memorial Fund                   |
| The Walbridge Fund, Ltd.                       |
| <i>Centurion</i>                               |
| Atlantic States Legal Foundation               |
| First Union Foundation                         |
| C.D. Spangler Foundation, Inc.                 |

## Friends



### Capital Improvement

The college has undertaken a variety of capital improvement projects to enhance the students' learning experience. One of the most significant projects addressed by ESF's capital plan has been the renovation of Baker Laboratory.

When completed, the renovated laboratory will provide the college with a center for engineering and technology, and a new home for the college's Faculty of Environmental Resources and Forest Engineering, with its specialties in water resources, mapping sciences and geographical information systems. The building also contains faculty offices and laboratories for the college's Faculty of Construction Management and Wood Products Engineering.

In Marshall Hall, new data cabling was installed throughout the design studios, drafting tables were replaced with computer workstations, and a second computer teaching lab was added. The newly configured studios were used for the first time during the fall 2000 semester. This is a significant investment in keeping the college competitive with other landscape architecture programs across the country.

The rehabilitation of the Ranger School, the first major capital improvement project at the school in 40 years, began in spring 2001 and is scheduled to be completed in 2003.

#### Founder's Club

Cathrine C. Baxter  
Daniel Cameron  
Nancy Cameron  
Ann Castagnozzi  
Frederick W. Celke  
Zena A. Celke  
Richard D. Greenfield  
Patricia S. Gustafson  
Dale Johnson  
Vera Johnson  
George W. Lee Jr.  
Marion W. Meyer  
Burton Perry III  
Jerome Prigoff  
Harriet Schwarzer  
Virginia L. Townsend  
M.J. Van Witsen  
Louise Wendel

#### President's Club

John T. Chamberlaine  
Charles I. Hamilton  
Cheryl Hamilton  
Randolph D. Hamilton  
Jan V. Johnson  
Gratia Lowe  
Dr. Elizabeth H. Naumburg & Carl Hoffman  
Nettie Prosser  
Charles L. Rosenthal  
Renee Wolfe

#### Leader

Janette Burnett  
R. Eugene Cartledge  
Georgina L. Jordan  
George Marton  
H. Louise Colvin Vier  
Henry G. Williams

#### Pacesetter

Maureen A. Burke  
Donald W. Edwards  
David Emery  
Gregory Guy  
Robert A. Schmidt  
James T. Townsend  
Rita M. View

#### Centurion

Charles W. Acker  
Charles R. Bosley  
Franklin J. Bouvy  
Doris A. Darrone  
Michael Deseve  
Michael C. Diehl  
Thomas L. Fout  
Allen E. Galson  
Timothy F. Jackson  
Jan D. Klotz  
Clifford E. Knotts  
Richard P. Lehmann Jr.  
Barbara A. Lepley  
Ann W. Maltby  
George F. Martin  
Jeffrey J. McDonnell  
Michael A. Mele  
George Muller

David W. Owens  
Richard J. Roy  
Donald W. Shive  
Constance E. Stinemeyer  
Janet Kopp Tanner  
George Tasker  
John M. Thomas  
Maurice Connor Trust  
Grace Vredenburg

#### Pioneer

Allison-Claire Acker  
Paul P. Andrews Jr.  
Carson Barry  
Charles E. Bartlett  
Kermit E. Becker  
Dale Bielecki  
J. Kenneth Bourgon  
Francis T. Bradley  
Grace H. Burritt  
Isaac D. Butner  
Nicholas C. Chybinski  
Dennis Cook  
Robert W. Crocker  
John W. Draper  
Patrick J. Dwyer  
R. David Fazenbaker  
Roger N. Fazenbaker  
John H. Ferner  
Richard A. Forys  
Kathi L. Gares  
Herbert George  
Richard W. Grandstaff  
Willard E. Guthrie

John G. Hamilton  
Howard K. Herbert  
Thomas L. Hotchkiss  
Scott A. Igoe  
Andrew C. James  
Shirley K. James  
Brian K. Jenkins  
John Kelly  
Robert L. Kidwell  
Raymond D. Knepp  
John M. Koontz  
Henry Kulig  
Patricia M. Leach  
Charles R. Legge  
John C. Marini  
Michael L. McDowell  
Robert E. Moran  
Richard B. Murray  
William W. Naugle  
Peter Pamepinto  
Gerda Picco  
John F. Plocinik  
Frederick F. Pritts  
Kevin J. Robison  
Robert T. Shrout  
William B. Smith  
Richard A. Stewart  
Jack T. Tessier  
Kenneth A. Weir  
Robert A. Welsh  
Philip C. Whetstone  
Kenneth Hugh Wilcox

## Parents

#### Leader

John A. Thorne

#### Pacesetter

Thomas A. Davidheiser  
Karen K. Zumwalt

#### Centurion

Anne Marie Buss  
Dennis Claire  
Robert J. Craner  
Manuel DaSilva  
John & Linda Dickey  
Paul E. Doxey  
Bruce C. Duncan  
Michael J. Gabriel  
Donald F. Gerson  
James C. Ippolito  
Kenneth N. Jones

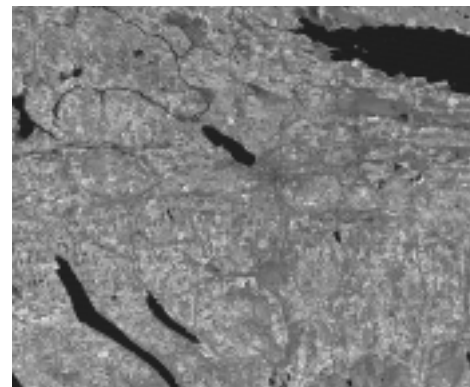
Barbara H. Kostick  
Jeffrey R. Kraus  
Chao-yu Kung  
Donna A. Luby  
John Lutz  
W. John Makarowski  
George McLean  
Michael Nicoll  
Thomas Nicoll  
Robert Ramage  
Michael G. Reilly  
Arcadio Ronquillo  
Alan Sacerdote  
Janet Sartori  
Robert G. Spahn  
Paul J. Sysak  
Joseph & Beryl Szwed

Nicholas Viscio  
Robert C. Wood  
Carlos H. Yoc  
*Pioneer*  
Kathleen M. Adragna  
Charity I. Akujuo  
John S. Alberts  
Catherine M. Albunio  
Sonia Allen  
James A. Alloway  
Peggy Andersen  
Christina Aracil  
Richard W. Attwood  
Jean Baretsky  
David Barkley  
Renee Barros  
Richard Barton

Mark S. Bellenger  
Janet Bennett  
Mary Bergen  
Robert P. Billings  
Stephen Blabac  
Barry M. Blair  
Barbara Bleckinger  
John D. Bogdan  
Susan Borchardt  
Gail Borst  
Kenneth N. Boudette  
Buff Branson  
Geoffrey A. Briggs  
Dennis A. Brobston  
Raymond K. Broska  
Laura Busam  
Judy Cadman

*Parents continued*

|                      |                        |                       |                      |
|----------------------|------------------------|-----------------------|----------------------|
| Linda P. Campbell    | Gary L. Erck           | Charles Knapp         | Richard C. Patchett  |
| Edmund M. Cancellare | Joan Essen             | David Kneeskern       | Maria Pena           |
| Karen Carlson        | John Facticeau         | Samuel G. Knowlden    | Agnes Penque         |
| James D. Cartin      | James D. Felske        | Joyce Koenig          | Philip G. Perkins    |
| Beth Cash            | Marlyn Ferris          | Tina Kral             | Richard Petendree    |
| Gloria Caviglia      | Elizabeth Fladd        | Ralph Kreitz          | Michael Pichura      |
| Carol Cerny          | Vernon Fonda           | George W. Kress       | Carol Pierson        |
| John K. Chatterton   | Andrew Fortune         | Frank J. Kroll        | Gary R. Pikarsky     |
| Richard Chiavelli    | Paul Foster            | Gerald A. Laquay      | Robert E. Platt      |
| Paul A. Christman    | Daryl H. Fowler        | Sharon L. Leao        | Stanley Pushlar      |
| Toni F. Christman    | Joseph M. Fox          | John Leidner          | Nelson J. Putnam     |
| Deborah A. Clark     | Kathy Francisco        | Bruce N. Lessard      | Patricia A. Redmond  |
| Eleonore Collins     | Steven Frank           | Richard G. Liddell    | Daniel J. Rice       |
| Donna L. Colvin      | Charles R. Freese      | Joseph Ling           | Robert J. Richeda    |
| Kevin V. Conley      | Stephen Gaj            | Arthur J. Lipp        | Timothy R. Riley     |
| Joseph W. Connolly   | Linda Gannoe           | Daisy Long            | Ronald Ripstein      |
| Chris Conway         | Thomas Gibbons         | Michael D. Lorenz     | Blanche Ritchie      |
| Edward R. Cook       | Roy Gilbert            | John R. MacKay        | Jack Robbins         |
| George Cook          | Peter Grace            | Michael Maclean       | Georgianna Rodriguez |
| Maryanne Cornell     | Tari Grant             | James B. Marean '73   | John A. Romano       |
| Kathy Costello       | William H. Graser      | Kenneth R. Marsh      | David Romanowsky     |
| James Coulombe       | Salvatore Grasso       | Howard W. Marshall    | John D. Rosenberger  |
| Judy Crandall        | Christine Griffin      | Edmund D.             | Mary Ann Ruby        |
| Robert A. Crawford   | Kim Griffith           | Mashmann              | Fernando Rufa        |
| Jean Cray            | Wallace W. Hall        | Paul M. Matala        | Christine M. Russell |
| Eladio Cruz          | Shelley Harrington     | Pamela J. Mathes      | Vito Russo           |
| Michael Cubera       | Michael '71 &          | Margaret Maunu        | Kathleen Ryan        |
| Ronald L. Culbertson | Barbara Hasenstab      | Sandra Mayo           | Robert Sager         |
| Robert Darin         | Dennis K. Haungs       | Joseph T. McGough Jr. | Russell Saladin      |
| Pamela J. Darling    | Leslie Hawkridge       | John A. McGrath       | Jerry Sangiuliano    |
| Charles J. Dechon    | Michael Hayes          | Nancy McIver          | David L. Saunders    |
| Charles Decker       | Elizabeth Hesson       | Michael Mclaughlin    | Thomas H. Schlegel   |
| Donald Dehoff        | Richard Hetey          | Brian McMillin        | Francis J. Schmitt   |
| John R. Dempsey      | Lewis M. Hill          | Vincent McNally       | Marianne Schreiber   |
| Louis Detor          | Samuel S. Hirschey '71 | Joseph Mehalick       | JoAnn Schultz        |
| Gary Devoe           | Robert E. Hoehn Jr.    | Lindalee A. Menchetti | Craig D. Schumacher  |
| Bruce Dickmann       | Emma Giles             | Patty Meschino        | Maxine Seamans       |
| John M. DiMiceli     | Hofmeyer               | Susan Miller          | Cindy Senison        |
| David Donnelly       | Edward B. Holtz        | Michael Mills         | Ralph &              |
| Robert Downs         | Evelyn Holz            | Pamalan Mitsch        | Cindy Shepardson Jr. |
| Dariele Drake        | Jeff Hotaling Sr.      | Ronald H. Mucha       | Mary Ann Sieber      |
| John C. Druke        | David Howard           | Sharon Mulrean        | Leo Siemion Jr.      |
| David J. Duckett     | Fred M. Howard         | Paul E. Nester        | John Silvestri       |
| James T. Dumpert     | Nancy Howland-Miller   | Pat Nichols           | Robert M. Sinko      |
| Mary F. Dunlap       | Ray G. Huysman         | Laura Norfleet-       | Robert J. Slusarz    |
| Sharon Dutil         | John Hyde              | Raymond               | James Smaldino       |
| Anthony Eallonardo   | Michael J. Jacobs      | Richard Noss          | Chester L. Smalley   |
| William M. Eddy      | Barb Johnson           | Christopher O'Connor  | James &              |
| Jeff Edwards         | Barbara R. Johnson     | John J. Olszewski     | Barbara Smith        |
| Randolph Ehrenzeller | Stuart Johnson         | Barbaraann H. Owad    | Judy W. Soffler      |
| James P. Eisenberg   | Marilyn Kahan          | Tim Owens             | Barry Sohm           |
| Cindy Ely            | Richard S. Katz        | Steve Pachla          | Stephen Spinosa      |
| Werner Endriss       | Robert Keller          | William R. Palmer     | Joseph Spossey       |
| Clare Epworth        | Mike Kirchgessner      | James Palozzola       | Richard Stoddard     |
| Peter J. Erardi      | John Kirk              | Juan Paredes          | Timothy Stoddard     |



*Institutional Collaboration*

ESF actively pursues collaborative efforts with other institutions. The following is a sampling of projects being conducted between ESF and its collaborators.

Through the New York State Center of Excellence in Environmental Systems Engineering, ESF is working with Syracuse University and with support from Niagara Mohawk Power Corporation, McQuay International, Syracuse Research Corporation, Carrier Corporation, Welch Allyn, EMC2 Corporation, HealthWay Products Company, Inc. and IBM to pull together all of the programs, centers and areas of expertise in environmental systems engineering that have been developed in Central New York over the last several years.

ESF is the lead institution in the new brownfield remediation training and research center to be built in Utica's Harbor Point area. The center will be operated by SUNY and run by a consortium of institutions including ESF and four other schools in the SUNY system.

ESF is involved with NASA's Affiliated Research Center (ARC) program. The ARC provides a connection between business and ESF's high-tech remote sensing and mapping technology. Businesses large and small can use the technology to develop and market innovative products and services. ESF is also involved in a NASA effort to put remote sensing and other geographic information technologies to work for state forestry agencies.

ESF together with SUNY Upstate Medical University has submitted an exciting proposal to develop a biotechnology research center. The proposal has been submitted to the New York State Senate under the GEN\*NY\*SIS program.

*Parents continued*

|                       |                         |                     |                    |                      |                 |
|-----------------------|-------------------------|---------------------|--------------------|----------------------|-----------------|
| David J. Storch       | Craig D. Thompson       | James C. Turner     | Susan Wager        | Linda Widrig         | Karen A. York   |
| George E. Stuckey Jr. | Samuel L. Thorndike Jr. | Dunham H. Tyler     | George Waldenmayer | Theodore R. Wiedrich | James H. Young  |
| Deborah H. Sullivan   | Donna Tilden            | Heinz Peter Untiedt | Robert R. Watts    | David A. Williams    | Stanley L. Zak  |
| Robert Sykes          | Mary Tillotson          | Wesley Vaughan      | Ron Weiss          | Alan C. Wilson       | Richard Zigrino |
| Paul Szarowicz        | Stephen Todd            | Elizabeth Rose Vega | Jill Wheadon       | Kenneth Wolff        |                 |
| Pawana M. Taon        | Anna K. Toole           | Elizabeth Veliz     | Tim White          | Elizabeth Wright     |                 |
| Charlene J. Thayer    | David Tresohlavy        | Roy F. Viskupic     | Tracy White        | Thomas A. Yacavone   |                 |

*Board of Trustees and Foundation Directors*

|                         |                         |                        |                        |                        |                         |
|-------------------------|-------------------------|------------------------|------------------------|------------------------|-------------------------|
| <i>Founder's Club</i>   | Thomas C. Burkly        | Arthur V. Savage       | William L. McGarry Jr. | Marion Hancock Fish    | Harold E. Schumm '53    |
| Domenico Annese '41     | Douglas L. Cotton       | Ross S. Whaley         | Robert R. Quinn '75    | Robert B. Johnson '52  | Robert S. Stegemann '80 |
| Curtis H. Bauer '50     | George W. Curry         | J. Warren Young        | Sarah Wiles '83        | Samuel Perry '39       | William P. Tully        |
| John D. Marsellus       | Gregory Harden          | <i>Leader</i>          | <i>Pacesetter</i>      | Connie S. Webb         | <i>Pioneer</i>          |
| Robert M. Sand '50      | Rosalia Hull Linn       | Douglas W. Charles '73 | David G. Anderson '50  | <i>Centurion</i>       | Herbert Seidel '43      |
| Walter P. Smith '54     | Nancy A. Mayer '71      | Stephen Y.L. Chow      | Dennis R. Baldwin      | Daniel T. Fitts '81    |                         |
| <i>President's Club</i> | Charles B. Morgan       | Richard B. Crockett    | Laura Bongiovanni      | Richard E. Garrett '59 |                         |
| Stephen V. Ardia        | Cornelius B. Murphy Jr. | Jeffrey B. Davis       | R. Leland Davis        | Ann G. Higbee          |                         |
| Edward J. Audi          | Harrison H. Payne '50   | James M. Heffernan     | John D. Fey '71        | Virginia C. Robbins    |                         |

*Named Funds*

|   |  |   |
|---|--|---|
| George J. Albrecht Lecture Fund                             | Daniel M. Castagnozzi Memorial Fund                      | Nicholas DeCandia Endowed Scholarship                             |
| Maurice M. Alexander Wetland Research Fund                  | Central National-Gottesman Inc Endowed Scholarship       | Wilford A. Dence Award  |
| Stuart D. & Cecile T. Alexander Endowed Fellowship          | Denise M. Cerimeli Memorial Fund                         | Carlton F. Diskin Endowed Scholarship                             |
| Allied Paper Sales Associates Endowment                     | L. Baxter Chamberlain Endowed Scholarship                | William J. Donlon Visiting Professorship in Environmental Science |
| Alumni & Friends Endowment for Pulp and Paper Science       | Betty Moore Chamberlaine Memorial Fund                   | John H. Ben Draper Jr. Endowed Scholarship                        |
| Domenico & Serafina Annese Fund                             | John & Marie Chamberlaine Memorial Scholarship           | George F. Earle Memorial Scholarship Fund                         |
| Annual Fund Merit Scholarship Program                       | Chemistry Emeriti Faculty Fellowship                     | Empire State TAPPI Endowed Scholarship                            |
| Baillie Lumber Company Scholarship Fund                     | Chemistry Graduate Fellowship                            | Endowment for Management Education in Paper Science & Engineering |
| Paul C. Baldwin Endowed Scholarship                         | Earl Church Memorial Fund                                | Charles W. Engelhard, Jr. Endowed Scholarship                     |
| Bartlett Tree Foundation Grant-In-Aid                       | John P. Clark Memorial Scholarship                       | Engelhard Corporation Endowed Scholarship                         |
| Herbert R. Baxter Scholarship Fund                          | 1931 Class Fund  | Saul L. Epstein Endowed Scholarship                               |
| Bennett Memorial  | 1936 Class Fund  | Faculty of Chemistry Fund   |
| Jay & Olive Bentley Scholarship Fund                        | 1939 Class Fund  | Faculty of Environmental & Forest Biology Fund                    |
| Olive M. Bentley Ranger School Scholarship and Chairs Award | 1943 Class Fund  | Faculty of Forestry Fund  |
| John V. Berglund Memorial Forestry Scholarship Fund         | 1950 Class Fund  | Faculty of Landscape Architecture Fund                            |
| Alfred Green Blake Endowed Scholarship                      | Class of 1964 Scholarship                                | Faculty of Paper Science & Engineering Fund                       |
| Board of Trustees Fund                                      | Raymond & Barbara Cline Silviculture Scholarship         | Faculty of Wood Products Engineering Fund                         |
| Olin & Grace Bockes Fund                                    | Sandy Cochran Memorial Fund                              | C. Eugene Farnsworth Memorial Fellowship                          |
| Simeon H. Bornt III Memorial Fund                           | College Anniversary Fund                                 | Sol Feinstone Award   |
| Bristol-Myers Squibb Minority Scholars Program              | College Memorial Fund                                    | Forest Engineering Alumni Scholarship                             |
| Kenneth W. Britt Endowed Scholarship                        | Continuing Education Fund                                | Forestry Undergraduate Scholarship                                |
| H.P. Brown Endowed Scholarship                              | Daniel Cooke '55 Ranger School Scholarship               | Philip Friedman Memorial Fund                                     |
| Henry H. Buckley Endowed Scholarship                        | Wilfred A. Cote Jr. Endowed Wood Technology Seminar Fund | Friends of Moon Library Endowment                                 |
| Buholtz Endowed Scholarship                                 | William J. Cox Memorial Scholarship                      | Geis Memorial Fund  |
| Russell F. Burke Memorial Fund                              | Cranberry Lake Endowment                                 | D. Samuel Gottesman Endowed Scholarship                           |
| Emanuel J. Carter Jr. Award                                 | George B. Creamer Endowed Scholarship                    | Grossman-Southern Container Foundation Endowed Scholarship        |
|   | William Cross Memorial Scholarship                       |   |
|   | Arthur G. & Pearl L. Chrysler Endowed Scholarships       |   |

*Named Funds continued*

|   |   |   |
|---|---|---|
| Richard & Patricia Gustafson Charitable Remainder Unitrust      | John A. Meyer Graduate Fellowship                         | Gary Scott Memorial Fund                                  |
| Gutchess Family Fund  | John A. Meyer Wood-Plastic Scholarship                    | Richard B. Scudder Endowed Scholarship                    |
| Gary Hamilton '76 Memorial Scholarship                          | Robert A. Miller Hardwood Company Scholarship             | Bradford G. Sears Lecture Fund                            |
| Hammermill Endowed Scholarship Fund                             | H. Walter Moeller Fund                                    | 75th Anniversary Endowed Scholarship                      |
| Janet Hensel Memorial Fund                                      | Harry Clare Moore Endowed Scholarship                     | Walter A. Sherman Undergraduate Scholarship               |
| Hercules, Inc. Endowed Scholarship                              | Patricia & Jeffrey Morrell Scholarship                    | Hardy L. Shirley Memorial Fund                            |
| Bernard & Rebecca Hirsch Scholarship                            | Edward K. Mullen Endowed Scholarship                      | Joseph C. Shouvin Endowed Scholarship                     |
| R.N. Hoerner Sr., A. J. Hus, & J. H. Myers Founders Scholarship | New York Forest Owners' Association Scholarship Fund      | John & Henrietta Simeone Endowed Scholarship              |
| Mattias C. Huppuch '29 Scholarship                              | George A. Oechsle Endowed Scholarship                     | Carl O. Skoggard Endowed Scholarship                      |
| Harold Henry Holden Endowed Scholarship                         | Olin Corporation Endowed Scholarship                      | Raymond M. '52 & Rita J. Smith Scholarship Fund           |
| Minert E. Hull Endowed Scholarship                              | Frederic W. O'Neil Endowed Scholarship                    | Ernest Sondheimer Fund                                    |
| International Paper Company Endowed Centennial Scholarship      | C.L. Pack Endowment                                       | John V. Spachner Endowed Scholarship                      |
| Edwin C. Jahn Fellowship  | Randolph Green Pack Fund                                  | Joseph S. Spaid, Sr. Fellowship                           |
| James River Corporation Endowed Scholarship                     | Edward E. Palmer Memorial Scholarship                     | Leroy C. Stegeman Endowment in Invertebrate Ecology       |
| Robert Jelinek Endowed Scholarship                              | Paper Chase Endowed Scholarship                           | Elmer K. Stilbert '39 Fund                                |
| Lancy Jen '51 Endowed Scholarship                               | Paper Industry Management Association Endowed Scholarship | Roger and Bertha Strauss Endowed Scholarship              |
| Herman L. Joachim Endowed Scholarship                           | Parmalee Pooled Income Fund                               | Student Affairs Fund                                      |
| Herman L. & Gertrude Joachim Endowment Fund                     | Burton E. Perry Jr. Memorial Fund                         | Student Association Fund                                  |
| R.B. Johnson Scholarship Fund                                   | Jerome & Bertha Prigoff Endowment                         | Walter E. Tarbox Memorial Scholarship                     |
| William L. Johnson Fund for the Mapping Sciences                | Pound Family Annual Scholarship                           | Robert Taylor Endowed Scholarship                         |
| Ralph T. King Recognition Fund                                  | Pound Family Endowed Scholarship                          | Louis J. Thaisz Memorial Scholarship                      |
| Friedrich Klaehn Award  | Pulp and Paper Class of 1938 Endowed Scholarship          | Peter G. Thomson Endowed Scholarship                      |
| Philip L. Knapp Endowed Scholarship                             | Pulp and Paper Class of 1951 Endowed Scholarship          | Sandra C. Trice Endowed Scholarship                       |
| George J. Kneeland Endowed Scholarship                          | Pulp and Paper Class of 1952 Endowed Scholarship          | 25th Anniversary Corporate Scholarship Endowment Fund     |
| A.E. Komar Charitable Remainder Trust                           | Pulp and Paper Class of 1954 Endowed Scholarship          | 25th Anniversary Scholarship Endowment Fund               |
| A.E. Komar Student Aid Fund                                     | Pulp and Paper Class of 1958 Endowed Scholarship          | Union Camp Corporation Endowed Scholarship                |
| Maurice Landberge Endowment                                     | Pulp and Paper Class of 1967 Endowed Scholarship          | Piet Van Witsen Memorial Scholarship                      |
| Landscape Architecture Advisory Council Fund                    | Pulp and Paper Class of 1971 Endowed Scholarship          | John J. View Memorial Scholarship Fund                    |
| George Lanier Memorial Fund                                     | Pulp and Paper Class of 1977 Endowed Scholarship          | Robert F. Vokes Endowed Scholarship                       |
| Albert L. Leaf Memorial Fund                                    | Ranger School Endowment                                   | Ira D. Wallach Endowed Scholarship                        |
| The George W. Lee '47 Endowment Fund                            | Eugene C. Reichard Scholarship                            | James G. Wallach & Kenneth L. Wallach Endowed Scholarship |
| Clarence Earl Libby Endowed Scholarship                         | John H. Rich Endowed Scholarship                          | Richard J. & Lonny J. Watro Fund                          |
| Frank W. Lorey Endowed Scholarship                              | Carl M. Rise Fellowship in Forest Products Business       | Ross S. Whaley Endowed Scholarship                        |
| Julia A. Lorey Memorial Fund                                    | Raymond Rizzo Memorial Scholarship Fund                   | Gerald H. Williams Scholarship                            |
| Malcolm G. Lyon Endowed Scholarship                             | Robin Hood Oak Gift Plan                                  | Bruce H. Wright Endowed Scholarship                       |
| Marsellus Forest Management Fund                                | Roosevelt Wild Life Station Fund                          | Xerox Chemistry Scholarship                               |
| Bob Marshall Fund   | Phyllis Roskin Memorial Award                             | Robert A. Zabel Endowed Scholarship                       |
| Renata Marton Endowed Scholarship                               | Laurence E. Russell Endowed Scholarship                   | Harold F. Zigmund Endowed Scholarship                     |
| Herbert B. McKean '33 Endowment Fund                            | Saratoga Associates Fund                                  |   |
| John A. Meyer Environmental Chemistry Scholarship               | Randall J. Schmidt Memorial Fund                          |   |
|   | Conrad Schuerch Chemistry Graduate Scholarship            |   |

## You can make good things happen at ESF, in the community, and around the world.

Money invested in the College of Environmental Science and Forestry Annual Fund is seed money that generates handsome dividends.

Consider the contribution of Amanda O'Connor, one of many ESF students who benefit from scholarship support and who already have started to pay back the college, their professions, industry and the community at large.

### Support the ESF Annual Fund

Office of Development  
204 Bray Hall  
SUNY-ESF  
Syracuse, NY 13210  
Voice: 315-470-6683



Amanda O'Connor

#### Designing nurturing environments for children and the elderly.

When ESF landscape architecture major Amanda O'Connor was preparing for her off-campus semester, she decided to learn more about the unique adventure play areas that originated in Copenhagen, Denmark, during the 1940s.

O'Connor studied the Skrammelegeplads play area, designed by landscape architect C. Th. Sørensen, in Emdrup, a town inside the Copenhagen city limits. Activities include construction building, gardening, cooperative play and free play.

"I'm intrigued at how the mind develops through outdoor play and what a child needs in order to develop successfully in that critical period of life," O'Connor said.

She adds that "comfortable and nurturing" outdoor environments can be designed for the elderly as well as for children.

After high school, O'Connor pursued environmental studies at Keystone College in Pennsylvania. She changed her major to landscape architecture after learning how this field affects roads, housing developments and, yes, playgrounds. She transferred to ESF and was awarded an ESF College Foundation scholarship.

O'Connor has worked in the landscape architecture office, is a student caller for the Annual Fund and is the landscape architecture representative to the Undergraduate Student Association. She also was selected as a 2002 class marshal. Because of her grades and involvement in campus activities, she was awarded the Russell F. Burke Memorial Scholarship to help pay for travel to Denmark.

"Being an out-of-state resident was one of the things that created hardships for my family when I applied to school," O'Connor said. "However, this scholarship will allow me to complete my degree at ESF."

CHANGE SERVICE REQUESTED

## ON CAMPUS

### *Books and Monographs*

**Porter, William F. and H. Brian Underwood '86.** *Contraception and Deer: The Irondequoit Report.* The Roosevelt Wild Life Station, SUNY College of Environmental Science and Forestry, Syracuse, N.Y. 96 pages. December 2001.

**Porter, William F. and Kathy K. Fleming.** *Making Tracks: The Wild Turkey in the New Millennium.* Cadmus Press and National Wild Turkey Federation. Edgefield, S.C. 338 pages. 2001.

**Volk, Timothy A., Lawrence P. Abrahamson and J.L. Ballard,** compilers. *Third Biennial Conference of the Short-Rotation Woody Crops Operations Working Group.* SUNY College of Environmental Science and Forestry, Syracuse, N.Y. 200 pages. 2001.

### *Awards and Honors*

2001 Faculty of Landscape Architecture Urban Design Studio, Outstanding Student Project. Update New York Chapter of the American Planning Association. September 2001.

**Bentley, William R.,** reappointed chair of the Forestry Research Advisory Council to the U.S. Secretary of Agriculture.

**Engleman, Heather,** 2001 Diversity Scholarship, Society of American Foresters. September 2001.

**Hall, Charles A.S.,** third annual Foundation Award for exceptional achievement in teaching. ESF College Foundation, Inc. October 2001.

**Hawks, Richard S.,** appointed to the Board of Advisors, National Trust for Historic Preservation. July 2001. Named to the School of Architecture Advisory Board, Syracuse University. November 2001.

**Murphy, Jr., Cornelius B.,** named to the L.C. Smith College of Engineering and Computer Science Advisory Board, Syracuse University. October 2001.

## CAMPUS CALENDAR

### February 18

ESF College Information Session for prospective students. Also: February 22, March 8, March 22, April 5 and April 15. Additional information: Office of Undergraduate Admissions, 315-470-6600 or [www.esf.edu/admissions/undergrad/interview.htm](http://www.esf.edu/admissions/undergrad/interview.htm).

### March 2

ESF Alumni Reception, Thistle Lodge, Sanibel Island, Fla. Lunch, 11:30 a.m.; tour of J.N. "Ding" Darling National Wildlife Refuge, 1:30 p.m. Additional information: J. Culkowski or D. Caviness, Office of Alumni Relations, 315-470-6632.

### March 3

ESF Alumni Reception, Georgia World Congress Center, Atlanta, Ga. 1-4 p.m. Additional information: N. Parsons, Syracuse Pulp and Paper Foundation, 315-470-6592, or J. Culkowski or D. Caviness, Office of Alumni Relations, 315-470-6632.

### March 11-13

Workshop: Herbicide Action Course: The Utility Perspective. SUNY-ESF Syracuse campus. Additional information: ESF Continuing Education, 315-470-6891 or [ce@esf.edu](mailto:ce@esf.edu) or [www.esf.edu/ce/workshop/herbicide.htm](http://www.esf.edu/ce/workshop/herbicide.htm).

### March 15-16

Great Lakes Research Consortium Student/Faculty Conference. SUNY-ESF Syracuse campus. Additional information: ESF Continuing Education, 315-470-6891 or [ce@esf.edu](mailto:ce@esf.edu) or [www.esf.edu/glrc/conf.htm](http://www.esf.edu/glrc/conf.htm).

### April 6

Ranger School Open House for prospective students. Additional information: Office of Undergraduate Admissions, 315-470-6600 or [www.esf.edu/admissions/undergrad/interview.htm](http://www.esf.edu/admissions/undergrad/interview.htm).

### April 6

Spring Awards Banquet. Additional information: Office of Student Activities, 315-470-6658.

### April 11

Central New York Alumni Dinner. The Lodge, Skaneateles, N.Y. 4 p.m. Event includes a tour of Welch Allyn. Additional information: J. Culkowski or D. Caviness, Office of Alumni Relations, 315-470-6632.

### April 14-16

The 14th Northeastern Recreation Research Symposium. The Sagamore Resort on Lake George, Bolton Landing, N.Y. ESF Continuing Education, 315-470-6891 or [ce@esf.edu](mailto:ce@esf.edu) or [www.esf.edu/nerr](http://www.esf.edu/nerr).

### April 27

Spring Open House for prospective students. Additional information: Office of Undergraduate Admissions, 315-470-6600 or [www.esf.edu/admissions/undergrad/interview.htm](http://www.esf.edu/admissions/undergrad/interview.htm).