

Fall - Winter 2005 - 2006

INSIDE ESF

*The magazine of the
SUNY College of Environmental Science and Forestry*

*Honor Roll of Donors
2004-2005*

Inside ESF is published four times each year for alumni and friends of the SUNY College of Environmental Science and Forestry.

SUNY-ESF

1 Forestry Drive
Syracuse, NY 13210-2778
www.esf.edu

President:

Cornelius B. Murphy, Jr.

Vice President for Administration:

Connie S. Webb

Editor:

Jeri Lynn Smith
Director of News and Publications
jls@esf.edu

Graphic Designer:

Vance M. Blackburn
News and Publications

Additional Assistance:

Peggy A. Olrich
Wendy P. Osborne
Linda C. Tarolli

Office of News and Publications

122 Bray Hall
315-470-6644
www.esf.edu/newspubs

Photo Credits:

Page 2, Karen B. Moore
Page 3, Wendy P. Osborne; David White
Page 4, courtesy of Janet Allen; Wendy P. Osborne
Page 5, Wendy P. Osborne
Page 6, Marcia Barber; Wendy P. Osborne
Page 7, Claire B. Dunn; Karen B. Moore
Page 8 - 9, Yongwei Sheng; Paul Otteson
Page 10 - 12, Tony Siniscal
Page 13 - 14, Claire B. Dunn;
artwork courtesy of Rick Kovacs
Page 14, James M. Heffernan
Page 15, Wendy P. Osborne
Page 16, Wendy P. Osborne;
John Dowling Photography
Page 17, Vance M. Blackburn

IN THIS ISSUE



3 CAMPUS UPDATE

SUNY-ESF Moves Up in U.S. News “Best Colleges” Rankings
ESF Researcher Has Role in Galapagos Tortoise Discovery
ESF TV Show Highlights Backyard Nature
290 Freshmen Participate in Saturday of Service
Barber Named HR Director
Get Energized Online
ESF Alum Named Conservationist of the Year
Green Roof Gets Green Light at ESF
Into the Woods
Enrollment Climbs to 2300
Irvin Receives SUNY Honor
Class Gets Lesson in Consumption
College Educates and Entertains at State Fair

9 THE DISAPPEARING LAKES

An ESF engineering professor says changes to the Arctic permafrost have caused more than 100 lakes to disappear in Siberia.

10 BACK FROM THE BRINK

Thriving populations of large, healthy fish were found in Syracuse’s Onondaga Lake by ESF researchers this summer.

13 INVEST IN WANAKENA?

A Ranger School alumnus’ faith in the region paid off for his growing business.

15 HONOR ROLL OF DONORS

ON THE COVER

Photographer Barb Dugan captured this glorious look at Arbutus Lake at ESF’s Newcomb Campus.

About ESF

The State University of New York College of Environmental Science and Forestry offers a diverse range of accredited programs and degree options in chemistry, construction management and wood products engineering, environmental and forest biology, environmental resources and forest engineering, environmental science, environmental studies, forest and natural resources management, forest technology, landscape architecture, and paper science and engineering.

ESF takes affirmative action to provide equal opportunity for all people and to build a campus community that reflects a wealth of diversity.

Vision

A better world through environmental discovery.

Mission

The mission of the College of Environmental Science and Forestry is to advance knowledge and skills and to promote the leadership necessary for the stewardship of both the natural and designed environments.

SUNY-ESF Moves Up in U.S. News "Best Colleges" Rankings



For the fifth year in a row, SUNY-ESF earned a place among the top universities in America as ranked by *U.S. News & World Report*.

ESF is listed among the top national universities in four categories, moving up several places from last year's rankings in three of those categories.

ESF is listed 43rd in "the top 50 public national universities," up from 46th last year, and is listed 93rd in the ranking of overall best national universities, in which the college previously was listed at 98.

The *America's Best Colleges 2006* guidebook, which was published Aug. 22, places ESF fourth in the category "highest proportion of classes under 20." The college was not listed in this category last year but had been in previous years.

ESF's rankings also include 50th in the "great schools at great prices — national universities" category. Last year the college was ranked 40th.

"We are delighted," said ESF President Cornelius B. Murphy, Jr. "We made progress over the 2005 rankings in most categories. I congratulate our faculty, staff, administration and students for helping to achieve this recognition." ■

ESF Researcher Has Role In Galapagos Tortoise Discovery

An ESF researcher was part of a team that discovered a new taxon of Galapagos tortoise, indicating that there is a previously unrecognized diversity, and possibly an entirely new species, among the dwindling population of giant tortoises.

Dr. James P. Gibbs, an expert in conservation biology, was part of the team that studied the tortoise population on the island of Santa Cruz.

Scientists had believed that the existing tortoise populations on the island comprised a single taxon (a species or sub-species). But through the use of molecular genetic and analytical tools, they discovered there are three distinct genetic lines among the tortoises.

The Galapagos Islands are in the Pacific Ocean, some 650 miles off the coast of Ecuador.

Gibbs worked on the project with researchers from Yale University and the Charles Darwin Research Station. The study was funded by the ECOSAVE Project of the Yale Institute for Biospheric Studies and a National Geographic grant. ■

ESF has created and is distributing an innovative new television series, "Nature in Your Backyard."

The series, produced by ESF's Office of News and Publications, aims to help people enjoy and better understand the world around us and features aspects of nature people often overlook. The series' first season featured eight segments and each segment was two minutes long.

"Nature in Your Backyard" debuted Oct. 14 on WSYR Channel 9 in Syracuse. Graduate student Emily DeBolt was the reporter and host.

Such simple things as attracting certain birds to your yard, why squirrels do what they do, how the leaves change color in the fall, what amphibians live where you least expect it, and the migration of the

monarch butterflies were among the first season's topics, said producer Dave White, media relations coordinator in the Office of News and Publications.

White and Research Associate D. Andrew Saunders, Faculty of Environmental and Forest Biology, developed the idea last spring to raise the electronic media profile of ESF. In addition to working with DeBolt, Saunders supervises the technical aspects of the programs, reviewing the science portrayed in each segment.

DeBolt, a master's candidate in environmental interpretation, does the basic research, writing and reporting for each segment. Freelance videographer, Mark Nicotra, shoots and edits the segments.

The series aired first on Bridge Street, a Monday through Friday magazine show on WSYR. As owner and producer of the series, ESF has revamped the program segments for other television markets. The Orange Television Network at Syracuse University will re-package the program for their viewers.

"Nature In Your Backyard" demonstrates one of the many professions possible through the study of environmental interpretation. Today, interpretive careers exist in a broad array of institutions beyond the nature center, such as science museums, federal and state resource agencies, zoos, arboreta, aquaria, and ecotourism and travel agencies such as those sponsoring birding and whale watching opportunities.

Tim Fox, executive producer of Bridge Street, liked the concept immediately and envisioned a good match with the goal of their program, which spotlights activities in the community related to entertainment, consumer issues, health, and recreation.

Production of a second season of "Nature in Your Backyard" segments is underway. Some of the working titles for individual shows include, "Different Kinds of Snow," "Frozen Frogs" and "Woodchuck Hibernation." ■



Videographer Mark Nicotra and ESF graduate student Emily DeBolt work on a segment of "Nature in Your Backyard."

290 Freshmen Participate in Saturday of Service

More participating students did more work in more areas around Syracuse for ESF's second annual Saturday of Service for incoming freshmen.

Approximately 290 students and orientation leaders fanned out across Onondaga County on Saturday, Aug. 27, to help with clean up activities at city and county facilities. ESF initiated the Saturday of Service program last year to increase student involvement in the community, introduce them to the area and help the freshmen get to know each other. Around 250 students were involved in the program last year.

The college teamed up with the Syracuse Parks and Recreation Department to help with clean-up and repairs in Lincoln, Thornden, Elmwood and Sunnycrest parks as well as a section of Onondaga Creek.

Patrick Driscoll, commissioner of the parks and recreation department, said, "We are truly thankful that ESF has selected a number of sites in Syracuse to do their day of service. We have always felt that our city parks system is a natural laboratory for the students enrolled in ESF and are very pleased with our ongoing relationship with the college."

Working with Onondaga County, ESF students also helped with clean up in Onondaga Lake Park and at Carpenters Brook Fish Hatchery.



Robert Geraci '73, commissioner of Onondaga County Department of Parks and Recreation, said, "Volunteers are a backbone to the success of county parks, from special projects to being involved with every day programs in the parks."

"As a graduate of ESF, I am so proud and pleased that a group from the college (helped) us," said Geraci. "And for those students that might not have been to either facility before, I'm guessing some strong interest may get established for future visits!"

Last year, through a variety of programs like the Saturday of Service, ESF students contributed more than 62,000 hours of volunteer work in Central New York. ■



ESF students work on clean up activities in the Syracuse area.

Barber Named HR Director

Marcia A. Barber, a 16-year veteran of ESF, has been named the college's new director of human resources.



Marcia A. Barber

Barber, who most recently served as ESF's assistant director of human resources, replaces Elaine Irvin, who retired in October. Barber was selected for the position after an extensive search process with candidates representing public and private colleges and universities.

In her previous role Barber was responsible for recruitment and employment processes for the college's 485 employees on both state and SUNY Research Foundation payrolls. Her experience includes overseeing classification and compensation; working with employee relations; and developing and delivering employee training programs.

In addition, Barber has supervised ESF's affirmative action and ADA compliance programs.

She is a member of several professional organizations and serves on numerous college committees. Barber additionally is a New York State-licensed wildlife rehabilitator and certified black belt karate instructor.

"The search committee, chaired by Elizabeth Elkins, did an outstanding job of developing a strong pool of qualified candidates," said Connie S. Webb, ESF's vice president for administration. "Marcia Barber is an excellent choice and we in the college administration look forward to working with her in this critical position." ■

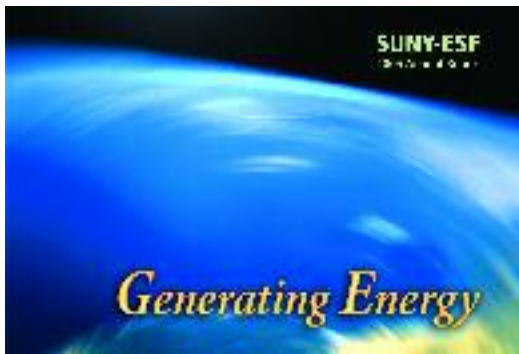
Enrollment Climbs to 2300

ESF's fall enrollment totalled 2,382 full- and part-time graduate and undergraduate students, up slightly from the fall 2004 enrollment of 2,238.

The college enrolled 260 new freshmen, the largest freshman class in 10 years.

New transfer students numbered 153 on the Syracuse campus and 43 at the Ranger School in Wanakena, N.Y.

Fall graduate student enrollment totalled 600 including 90 new students. ■



ESF's friends and alumni can read about the college's most recent accomplishments in the online annual report.

Get Energized Online

ESF's 2005 annual report, "Generating Energy," is online on the college's Web site.

The report features highlights of the previous academic year, outlines ESF's critical role in developing biomass energy, and presents news of college faculty, researchers, students and staff using their talents — their energy — to improve the community, the country and the world.

"I'm excited by the progress our college has made this past year," said ESF President Cornelius B. Murphy, Jr. "I hope our alumni and friends will visit our Web site to view the 2005 annual report."

The report contains information in five different sections: In the Classroom, In the Community, Groundbreaking Research, Finances and Buildings, and College Community.

Individuals interested in viewing the report should go to the college's homepage, www.esf.edu, and click on the annual report icon in the lower right side of the screen. ■

ESF Alum Named Conservationist of the Year

ESF alum Christopher Navitsky of Bolton Landing was named 2005 Conservationist of the Year by The Adirondack Council. Navitsky, a 1984 graduate in forest engineering, is a waterkeeper for Lake George.

"Chris has been an important force for environmental protection since he first began his work on Lake George," said Brian L. Houseal, Adirondack Council executive director. "He has been a tireless advocate for the lake's health and for the sound planning and the well-enforced zoning needed to protect it." ■

Green Roof Gets Green Light at ESF

Come spring, ESF President Cornelius B. Murphy, Jr., will be able to look out his office window and see the roof of ESF's Walters Hall in lovely shades of green.

Plants — not paint — will be responsible for the color change.

This fall, Diamond Roofing of Syracuse and Lichtenfels Nursery of Johnstown, Pa., installed a "green roof," or vegetated cover, on the flat paper science laboratory roof as part of ESF's capital improvement efforts. Originally designed as a plaza roof deck, the area already had the structural capacity to support the green roofing system, which is heavier than a standard roof.

Green roofs provide numerous environmental benefits. These include controlling stormwater run-off and mitigating urban heat-island effects. Green roofs also help conserve building energy and reduce sound transmission, as well as create a pleasant, aesthetic environment that might provide wildlife habitat.

So far, said Brian D. Boothroyd, ESF's facilities program coordinator, the new roof has been a little too attractive to wildlife. "Squirrels have been pulling out our plants by the roots and burying their nuts in the growth media," he said. "We've had to replace about 150 plant plugs."

Walters' green roof comprises several layers beginning with an impermeable membrane. The system includes a drainage layer, vapor barrier, insulation and a layer of specially formulated growth media (soil). The roof is newly planted with six species of sedum and some alium. Specific varieties were chosen for their growth and flowering characteristics, tolerance for drought and exposure to sun, suitability to the Syracuse climate, and their shallow root systems, said Boothroyd.

It should take one to two years for the plants to spread and fill in.

"This is just one more way ESF is working to demonstrate the effectiveness of emerging environmental technologies," said Murphy. "Projects such as the Walters' green roof help move the science forward and provide our students with instructional as well as informal examples of our academic principles in action. We practice what we teach."

The Walters' roof renovation, including the green roofing system, was funded through ESF's allocation in the SUNY Capital Plan through the State University Construction Fund. ■



Workers install the green roof on Walters Hall.

Into the Woods AEC invites people to get up close and personal with science

On a picture-perfect September day, friends of ESF and the Adirondacks spent a day exploring Huntington Wildlife Forest to get a feel for the work currently being undertaken by ESF researchers.

The day was designed to give people a hands-on look at the research being done at the Adirondack Ecological Center (AEC). The event also allowed participants to be scientists for a day through interactive sessions.

Researchers led groups through a number of exciting workshops. Dr. William F. Porter, director of the AEC, said the program was developed with contemporary interests in mind. Deer and amphibian research were put in the spotlight. Interest in chronic wasting disease in deer and declining numbers in amphibian populations prompted the choice of topics.

People learned about the effects pollution has on the amphibian population and how to track tagged deer in one of North America's largest deer research programs; monitored water quality to understand the impact of acid rain; and discovered the varying ecosystems and photo opportunities of Goodnow Mountain.

At day's end, the groups discussed their findings with ESF President Cornelius B. Murphy, Jr., and Dr. Ross S. Whaley, Adirondack Park Agency chairman and former ESF president, during a reception at Arbutus Lodge, one of the great camps of the Adirondacks.

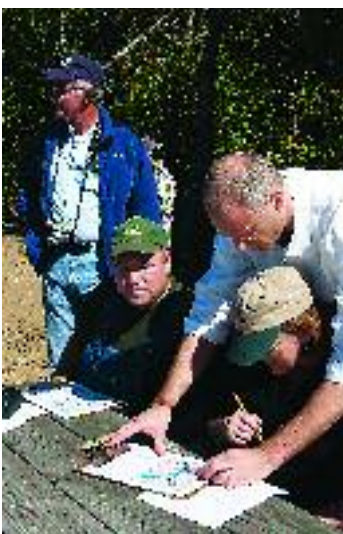
As one participant said, "The whole day made learning fun in a relaxed atmosphere."

Attendees came from Syracuse, Plattsburgh, Blue Mountain Lake, Lake Placid, Peru (N.Y.) and Tully.

"We wanted to introduce a wider audience to the wonderful work being done by the AEC," said Brenda Greenfield, director of development. "We also wanted to showcase the project being undertaken to renovate Huntington and Arbutus lodges to their original glory and our long-term plans to build a distance-learning/conference center to communicate the work done at the AEC to the rest of the world."

The event was a "great model for future events where we can share the science with alumni and friends and also share information with policymakers, the DEC and APA," said Porter.

"Participants learned a lot and thoroughly enjoyed the day. We garnered nice PR for the AEC. Plans are already in the works for a bigger and better event next year," said Greenfield. ■



Visitors to the Adirondack Ecological Center learn about tracking deer with telemetry, using a map, at right, and a tracking device, at left.



ESF President Cornelius B. Murphy Jr., left, former Human Resources Director Elaine Irvin and Vice President Connie S. Webb gather in Irvin's honor.

Irvin Receives SUNY Honor

Former Human Resources Director Elaine Irvin was presented with the 2005 Ted Barber Distinguished Service in Human Resources Management Award. Irvin retired from ESF in October.

The Barber Award was established to recognize excellence in human resources management and significant contributions to the profession.

Irvin worked for many years in various positions in SUNY before coming to ESF in 2000.

Said ESF President Cornelius B. Murphy, Jr., "In a rigid system that frustrates many, Elaine's approach has been to help all parties define the objective and then work together to find an innovative solution."

In nominating her for the award, Irvin's colleagues cited her unique and creative approach to problem solving, her willingness to go above and beyond what was required of her, and her ability to connect with others through her great sense of humor.

The Barber award is the highest accolade given by SUNY to human resources employees. It was created to recognize the unique and laudable qualities of Ted Barber, a human resources professional who was knowledgeable yet approachable; flexible yet concerned with following rules; and caring and supportive. ■

College Educates and Entertains at State Fair

ESF again staged a 12-day multifaceted exhibit at the New York State Fair Aug. 25 through Sept. 5. College faculties and programs hosted one or two days in ESF's exhibit tent, located in the New York State Park at the State Fair.

More than 125 people were involved in bringing the exhibit to fruition. Faculty, staff, students and family members volunteered at the exhibits to share ESF's research, programs and general information with the public. The exhibit was coordinated by Karen B. Moore, public relations associate in ESF's Office of News and Publications.

Fairgoers had the opportunity to learn about local flora and fauna, make paper, sample liquid nitrogen ice cream, see a boat run on solar power, make a birdfeeder, find out about the research being done on the college's various properties, and learn about New York trees.

ESF's fair participation also received notice from the local media. *The Post-Standard*, News10Now and WSTM-TV featured the exhibit on a number of days during the fair.

The college also exhibited for two days in the Horticulture Building, featuring the latest in energy research. Along with information about willow biomass, photovoltaic cells, and the molten carbonate fuel cell recently installed on campus, visitors received a willow cutting to start their own biomass crop at home.

ESF's exhibit is made possible through a cooperative agreement with the New York State Office of Parks, Recreation and Historic Preservation.

The Faculty of Chemistry has included photos from its day at the fair on its web-page at <http://www.esf.edu/chemistry/teece/statefair/index.html>



ESF students Billy Schoenberg and Erin McConnell participate in Dr. Mark Meisner's trash weigh-in as part of a class assignment.

Class Gets Lesson in Consumption

Sixty ESF students lugged more than 300 pounds of trash and recyclables around for a week this fall to personalize a lesson in consumerism.

The students in Dr. Mark Meisner's Nature and Popular Culture class spent the week collecting their own trash in one contractor-grade plastic bag, and putting their recyclables in another bag. Then they toted both bags to the ESF quad, weighed them and loaded them into a pickup truck for disposal.

"It's an unusual assignment to look at consumption," Meisner said. "I'm doing this so they are cognizant of the burden of their waste."

Together, the students collected 313.7 pounds of refuse and recyclables. Individual trash bags ranged in weight from .51 to 12.5 pounds. Recyclables ranged from nothing to 15 pounds.

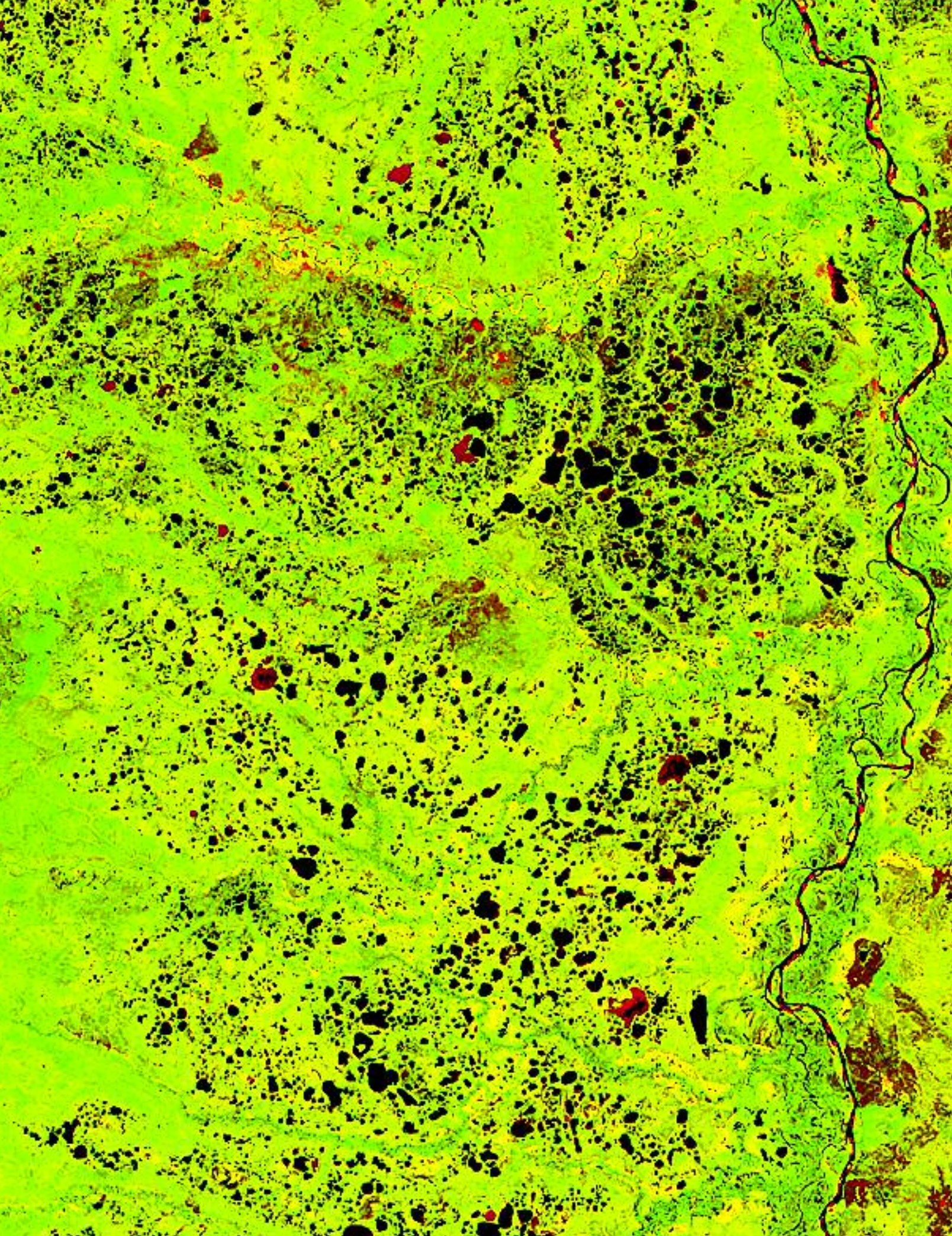
Students did their very public weigh-in on a balmy day that was the sixth day in a row to mark high temperatures between 75 and 82. Students said the heat did not make it easier to drag around bags of trash that got smellier by the day.

It could be worse.

Meisner said the assignment might last two weeks next year. ■



Danette Desimone, ESF's assistant director of business affairs, at top helps children work on a craft project at the New York State Fair. Chemistry's Dr. Mark Teece, in center, supervises the making of liquid nitrogen ice cream.



THE DISAPPEARING LAKES

Is Global Warming Causing Arctic Lakes to Dry Up?

by Claire B. Dunn

More than 100 lakes in an Arctic region of Siberia disappeared during the last 30 years, and scientists say global climate change is the reason.

In a paper published June 3, 2005 in the journal *Science*, researchers report that 125 lakes categorized as large because they were more than 40 hectares (nearly 100 acres) completely disappeared and are now revegetated and considered permanently drained. More than 1,000 other large lakes shrank to a smaller size.

"It's quite significant," said Yongwei Sheng, an ESF faculty member who did remote sensing work on the project. "This is the result of warming and changes in the permafrost. We believe it's due to global climate change."

Previous studies have shown that Arctic warming has accelerated since the 1980s.

Sheng said the lake data raise questions about how altered ecosystems will affect animal habitat, especially for migrating birds that depend on the lakes for water.

Sheng said the lakes drained, some partially and some completely, because of changes in the permafrost, subsoil which remains frozen throughout the year. "It's getting warmer there, so some of this material is melting and the lakes are draining," he said.

The study focused on 624,000 square kilometers (more than 150 million acres). Sheng said researchers have never before studied the extent of lake changes in such a large section of an Arctic region.

Sheng, now an assistant professor in the Faculty of Environmental Resources and Forest Engineering at ESF, worked on the project with Larry C. Smith at UCLA. Smith is a co-author of the paper, along with Glen MacDonald of UCLA and Larry D. Hinzman of the Water and Environmental Research Center at the University of Alaska in Fairbanks.

Satellite images revealed the change in land surface. Sheng compared images obtained in 1973 by the first land resources satellite used to gather information about geographical formations with images collected in 1997 and 1998. By comparing the two generations of satellite images, the researchers determined the changes in the lakes. ■

Dunn is assistant director in the Office of News and Publications.

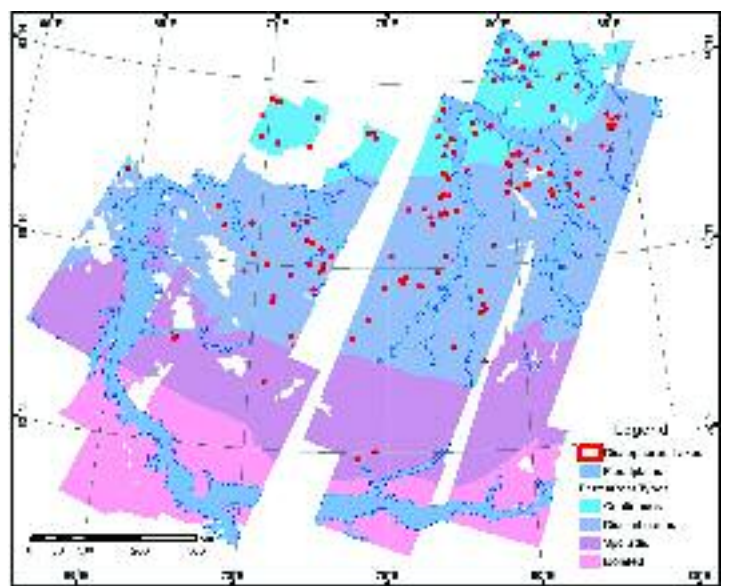


Image on opposite page shows changes in arctic lakes over the last 25 years. Areas in red are lakes that have shrunk significantly or no longer exist. Photos above depict the arctic landscape. Bottom image shows lakes that disappeared in red.



Back The

ESF graduate student Tony Siniscal holds a brown trout that he pulled from a net in Onondaga Lake.

by Claire B. Dunn

Thriving populations of large, healthy brown trout and walleye — and one 4-foot-long sturgeon — have been found in Onondaga Lake by ESF researchers.

The presence of the highly prized sport fish, discovered in nets this past summer, could mean that the lake — once considered to be among the nation's most polluted — is rebounding.

"It could reflect the improvement of Onondaga Lake," said Dr. Neil H. Ringler, an ESF fisheries expert who is serving as the college's interim dean of research programs. "I've been working on this lake since 1986 and I did not realize that there is a sizable population of large, cold-water fish there."

The discovery of fish that require water that is cool or cold and highly oxygenated could be signs that the lake is recovering from decades of industrial and sewage pollution.

"It may be that the quality of the lake has improved over time

and is permitting the fish to survive," Ringler said. "The trout and the walleye are especially of interest because of the cool water. It's clear that there's a fishery there we didn't know about, for the larger fish.

"This finding suggests that the lake may have far more potential for a cold-water fishery than we anticipated."

The discovery prompted the Onondaga Lake Management Conference, headed by Dr. Edward Michalenko, to extend a grant to study the movements of fish in and out of the lake. Ringler said that numeric tags and radio transmitters will be used to track the fish. He is also seeking support from New York Sea Grant, a network of research, education and extension services that promote protection of marine resources.

The fish populations were found by Tony Siniscal, a master's student studying the movement and habitat of fish in Onondaga Lake. He is completing an internship with the state Department of

Researchers find diversity in Onondaga Lake's fish population



Small Mouth Bass



Brown Trout



Long Nose Gar

From Brink

Environmental Conservation and supported by the Edna Bailey Sussman Foundation.

Siniscal's work involved setting gill nets in an area that has not recently attracted a lot of research interest. He set the nets between 20 and 30 feet below the surface, where experts had believed low levels of dissolved oxygen would hamper aquatic life during summer months.

He was working in sight of the waste beds on the lake's west shore, near a permanent habitat module established in the lake by the Onondaga Lake Management Conference. The module, which resembles a jetty, provides environment for aquatic plants and spawning habitat for fish.

One day in early June 2005, when he checked the nets, Siniscal found a brown trout that weighed 10 pounds. In the following days, he routinely found trout of that size and walleye that were more than 24 inches long. About a week after that first discovery, a thunderstorm

kept him from returning to the nets until the next morning. On that visit, Siniscal pulled in some 40 large walleye and four brown trout.

"I've fished the area a lot," said Siniscal, who grew up in nearby Liverpool. "I haven't found anybody catching fish of this magnitude. I've checked the records and I've never heard of anybody catching fish like this in Onondaga Lake."

Ringler and Siniscal believe the fish were migrating through the lake, feasting on the smaller alewives that live there. They suspect the fish came from Nine Mile Creek, Onondaga Creek or the Seneca River. Other research projects involve checking several types of nets in the lake but the scientists have not seen any juvenile brown trout or walleye, which indicates the fish are not spawning there.

Siniscal said the trout apparently left the lake later in the summer, perhaps in search of cooler water in Nine Mile Creek or the Seneca River. The walleye, however, were still in the lake at the start of autumn.

continued on next page



Large Mouth Bass



Walleye



Northern Pike



Lake Sturgeon



Channel Catfish



Fresh Water Drum

Siniscal was also netting quillback, a type of sucker that has never been seen in the lake, at the beginning of autumn. Quillback are usually found in larger bodies of water and their tributaries, such as Lake Ontario and the Black River.

And he had netted one sturgeon, which he estimated to be around 15 years old. He believes the sturgeon, classified as a threatened species in New York, probably moved into the lake from Oneida Lake.

“They’ve been seen in Onondaga Lake before but it doesn’t happen very often,” Siniscal said.

Scientists describe Onondaga Lake as hypereutrophic. Abundant nutrients, specifically phosphorus and nitrogen, result in significant

algae growth, which in turn supply food for bacteria, which consume much of the oxygen deep in the lake.

Essentially, the lake water becomes two layers: Approximately 20 feet on the top that is warmer and oxygenated, and deeper water that is cooler and can be virtually devoid of oxygen. In fall, when temperatures drop, the lake “turns over” and the two levels blend. As a result, reduced oxygen levels in the fall might force fish such as walleye and brown trout to leave the lake. Warm water fish, such as bass and sunfish, can survive all year. ■

Dunn is assistant director in the Office of News and Publications.

Boat Tour Shows Progress

by Dave White

SUNY-ESF played host to 100 government and industry leaders aboard the tour boat *Emita II* on a delightful October afternoon for an hour-long progress review on water quality and shoreline cleanup of Onondaga Lake.

From Dutchman’s wharf on the Seneca River, the tour went out up the south shore and returned along the lake’s north shoreline. Near Beach Street, Dr. Neil H. Ringler, interim dean of research programs, reported on studies by ESF biologists monitoring fish populations in the lake.

“It’s exciting to witness firsthand the benefits of our renewed investment in Onondaga Lake,” said Congressman James T. Walsh of Syracuse, who has secured \$125 million in direct federal investment for lake remediation efforts thus far. “The lake’s fishery is thriving, its water quality is improving dramatically, and its newfound potential to enhance our quality of life is limitless.”

Slightly farther down the tour stopped to watch the Honeywell/Parsons Engineering research boat conduct water quality monitoring. At Nile Mile Creek and the cliffs of waste beds, Dr. Donald J. Leopold, interim chair of the Faculty of Environmental and Forest Biology, explained the use of native plantings in the waste beds to capture water before it moves through the waste beds, becomes contaminated, and goes into the lake. The plants should minimize the problem by reducing water flow through the waste beds.

The final stop on the tour was the Salt Museum, where Richard Elander, commissioner of the Onondaga County Department of Water Environment Protection, updated wastewater treatment efforts.

State Sen. David J. Valesky called the tour “enlightening” and said, “The work done thus far rehabilitating this lake shows the breadth of knowledge and expertise at SUNY-ESF, and the impact this incredible Central New York institution can have on our environment, our community and our world.”

The boat then cruised along the north shore of the lake to offer guests a view from the water of Onondaga County’s most popular park, which includes ballparks, picnic areas, a marina, walking and riding trails.

Onondaga County Executive Nicholas Pirro, who has led the county’s \$450 million lake project, said Onondaga Lake is improving every day.

“We are really starting to see marked improvement in water quality and fish variety and population. Working with the Onondaga Lake Partnership we are committed to restore all aspects of the lake’s ecosystem for the community’s future use and enjoyment,” said Pirro. ■

White is media relations coordinator in the Office of News and Publications.

INVEST IN WANAKENA?



Ranger School grad and his family say 'Yes' to the future of the 'Gateway to Wilderness'

by Claire B. Dunn

Rick Kovacs was reading meters for the power company in his hometown of Bridgeport, Conn., when his boss mentioned a place called the Ranger School in faraway Wanakena, N.Y.

Kovacs had rarely been outside the depressed manufacturing city where he grew up in a Hungarian enclave. Scout trips to northern Connecticut had provided his only regular getaways and ignited a love for the outdoors.

The Ranger School sounded like the place for him to explore that interest in the outdoors, so he left his union job, packed up a Volkswagen bus and drove 10 hours to a tiny town in the northwestern Adirondacks. He enrolled in the Ranger School Class of '76 and fell in love with Wanakena.

"The Ranger School changed my life," he said. "I always thought that it would be great to come back here."

Nearly 30 years later, Kovacs is back in the community that calls itself "Gateway to Wilderness." With his wife, Angie Oliver, he is running a business and raising a family on the shore of the Oswegatchie River. A custom-made, 4-by-6-foot map pinned to the wall in



the library of their Packbasket Lodge has a pushpin at its very center, marking Wanakena.

"It's Wanakena as the center of the universe," Kovacs said.

The map reflects the decision he and Oliver made to have their lives revolve around Wanakena. Just over a year ago, they opened Packbasket Adventures, which they describe as "an old-fashioned Adirondack lodge and guide service." They did it in an area that has seen little new business in the last several years, and where banks were hesitant to back the venture.

They have since been rewarded with the 2005 Small Business Development Center Rural Entrepreneur of the Year award. The award honors New Yorkers who have overcome significant obstacles and exercised vision and persistence to launch their businesses. Packbasket Adventures was chosen from among hundreds of SBDC clients.

"They are probably one of the very few small businesses that have started there in the last few years," said Michelle Collins, a business advisor with the SUNY Potsdam-based center. "They (Kovacs and Oliver) don't give up. They never hesitated once. I never heard them say even once they were not considering the project anymore. Their faith in the project made it work."

Packbasket Lodge has four guest rooms with private baths, decorated in comfortable Adirondack style. Guests have access to a great room, a cozy library with telephone and Internet access, and a screened porch overlooking the river. Meals are served in an airy dining room that stretches along the back of the building, facing the river.

Kovacs' unshakable faith in the region's future formed the foundation for Packbasket Adventures.

After graduating from the Ranger School, he obtained his bachelor's degree and his master's in education from the University of Vermont. He stayed in Vermont, working on conservation projects with groups ranging from youths to Vietnam veterans, and met his future wife at a contra dance. They married, built a house and had two sons, Riczi (the Hungarian form of Richard) and Brooks, now 12 and 9.

continued on next page



Angie Oliver and Rick Kovacs stand alongside the Oswegatchie River with their sons, Riczi, left, 12, and Brooks, 9, and their Labrador retriever, Irish.

WHY “PACKBASKET?”



Packbasket Adventures got its name for two reasons. First, Rick Kovacs said, the packbasket is associated with the old-time guides' method of carrying gear. Second, Ed Reid, a retired forest ranger and author whose camp occupied the same piece of ground, wrote a small book called *Welcome to Packbasket Country*. The name helped identify the business as an “Old-Fashioned Adirondack Lodge and Guide Service.”

“We were the co-op-shopping, homesteading, home-birthing, typical Vermonters of the time,” Kovacs said.

They planted orchards and a field of Christmas trees, and raised goats, chickens and turkeys. “But every time I went to the mailbox, I saw another house going up,” Kovacs said.

He still felt connected to Wanakena. He had returned for annual reunions and followed the news as New York state obtained ownership of conservation easements on 139,000 acres that had been owned by Champion Paper, much of it in the northwest corner of the Adirondack Park. He knew the Natural History Museum of the Adirondacks was scheduled to open in Tupper Lake, 35 miles east of Wanakena, in 2006.

And he knew the forests, rivers and lakes surrounding Wanakena offer myriad opportunities for hiking, cross-country skiing, hunting, fishing, canoeing and kayaking, along with peace and quiet. He also was confident that there was a need for the business he and Oliver envisioned.

“We hatched this idea in Vermont,” he said. “I knew Wanakena had charm but no high-end place for anyone to stay. I really felt that people are going to come here and do these things.”

Added Oliver: “And a lot of the baby boomers who used to do this in tents now like a hot shower and a bed at the end of the day.”

They got their start in Wanakena in January 2001, when Kovacs served as a temporary faculty member at the Ranger School, filling in during Associate Professor Jamie Savage's semester of sabbatical leave.

“It was thanks to (Ranger School director and president of the Clifton-Fine Economic Development Corporation) Chris Westbrook that we got started here,” Kovacs said. “Working at the Ranger School gave us a place to live. It got us into the community without swooping in and saying, ‘We're going to start a business.’”

They had a plan and plenty of energy. The issue was financing. Kovacs wrote a business plan and began courting economic development groups in the area.

“We were turned down twice by every bank in the Adirondacks,” he said. “Part of it was the stigma on this part of the Adirondacks.”

Costs increased during the course of construction, necessitating more trips to the bank. Along the way, Kovacs and Oliver garnered support from several civic and economic development organizations.

The planning and preparations culminated in a frantic burst of activity the day before their first guests were expected.

“We had trucks lined up outside, delivering furniture and appliances. It was pandemonium,” Kovacs said. “We had volunteers here from the community putting furniture together and polyurethaneing. The health department was here doing an inspection.”

They needed food for their guests. Kovacs drove more than 60 miles each way to Watertown for groceries, earning the attention of state troopers who ticketed him for speeding in each direction.

“By that time, I was so stressed out I just wanted him to shoot me,” he remembered.

The pace has not slowed much.

On a recent summer night, after he finished helping his Boy Scout troop with a project, Kovacs grilled pork tenderloins, summer squash and potatoes for dinner. The next morning, he offered his

guests a choice between Mexican-style eggs and salsa tucked into whole-wheat tortillas, or Southern-style sausage-gravy over biscuits with scrambled eggs.

Then he outlined possible hiking routes for his guests and dropped a canoe at a launch site on the river for a couple who had come to Packbasket Lodge to celebrate their 10th anniversary. While Oliver remained at the lodge to supervise daily cleanup operations later in the morning, Kovacs took off with a customer as part of his Lincoln Logs sales rep duties.

Summer gives both Kovacs and Oliver a respite from their jobs outside the lodge. Oliver is a teaching assistant in nearby Star Lake, where she works in the middle school computer lab. Kovacs runs a tobacco prevention program at the Edwards-Knox School-Based Health Clinic in Edwards, 30 miles north of Wanakena. In addition, they serve as sales reps for the company that manufactures the lodge furnishings.

“I'm basically an entrepreneur. I try to see opportunities. And I just knew there were things to do here,” Kovacs said, pointing out the window of his screened porch. “Sure, there were times along the way when I said, ‘Why did we ever leave Vermont and come out here in the middle of nowhere?’”

“But I believed: If you build it, they will come.” ■

Dunn is assistant director in the Office of News and Publications.

Honor Roll of Donors

July 1, 2004 to June 30, 2005





Table of Contents

18	Founder's Club
19	Robin Hood Oak Society
19	1911 Society
19-29	Alumni
29	Corporations and Foundations
30	Board of Trustees and Foundation Directors
30	Friends
30	Organizations
31	Faculty and Staff
31-32	Parents
33-34	Named Funds





Brenda Greenfield

One Educated Person at a Time

by Brenda Greenfield

The news this year was full of reports of ESF faculty, researchers, students and staff using their talents to improve the community, the country, and the world.

ESF researchers have developed an ecologically sound way to produce ethanol from wood and are working to create a renew-

able energy source from willow. Our faculty and students are engaged in the cleanup of Syracuse's Onondaga Lake and are studying the effects of acid rain in the Adirondacks.

In the past year, we have aided in the reforestation of Afghanistan and traveled to Dominica to install a micro-hydro turbine. We assisted countless communities with sustainable community planning and design. ESF students performed 65,349 hours of community service this year.

An ESF chemist has identified and replicated a cockroach pheromone that will aid in urban pest control; a botanist has won a prestigious award for outstanding natural history writing.

In 2005, the ESF community again received numerous awards for its work and research, but perhaps the biggest impact of those achievements is that they launch our graduates into the world prepared to offer solutions to complex issues and problems.

You are a significant part of all of these achievements and you play a critical role in the life's work of every graduate.

In fiscal year 2004-05 our alumni, parents, employees and friends again came together to support the college in record numbers. Thanks to you our annual fund program grew by 14 percent to achieve record unrestricted contributions of \$310,000.

A large factor in the growth of the annual fund can be attributed to a 60 percent membership increase in the 1911 Society. This distinctive new giving society recognizes donors who make annual unrestricted contributions of \$1,911 or more. Named for the year of the college's founding, this group is the cornerstone of the annual fund, providing dedicated sustained support for future needs.

In addition to annual fund gifts, more than \$1 million was committed to specific academic programs and \$550,000 was added to our scholarship endowments. This year, donations from our corporate partners grew by 25 percent.

During the fiscal year, the foundation received two donations of real property. The eventual sale of one of these properties will benefit our endowment. The other property will be held in perpetuity to supplement the research facilities of the Cranberry Lake Biological Station.

As of June 30, your gifts had brought the foundation's assets to \$14.8 million, a 17 percent increase in one year. In addition, investment income of more than \$1.5 million contributed to our outstanding growth.

One of the primary purposes of the ESF College Foundation is to provide scholarship support to attract and retain the best and brightest students. In academic year 2004-05, the foundation provided more than \$480,000 in scholarships, fellowships and awards, a 20 percent increase over the previous year. In addition to scholarships, we also provided funding for research equipment, textbooks, guest lecturers and field experiences.

All of us at ESF deeply appreciate the support of the people listed in this Honor Roll of Donors. Without your help, none of the great things happening at ESF would be possible. By contributing to ESF you are helping make the world a better place, one educated person at a time. This is important work, and we thank you.

Greenfield is director of development at ESF and executive director of the ESF College Foundation, Inc.

Honor Roll of Donors 2004-2005

ESF's honor roll of donors acknowledges all individuals and corporations who supported the college with a financial contribution during the period July 1, 2004, through June 30, 2005.

The honor roll recognizes contributions made to the ESF College Foundation, the Syracuse Pulp and Paper Foundation, the ESF Alumni Association and the Ranger School Endowment and Furniture Fund.

Contributors are listed in alphabetical order within various donor categories. These categories are: alumni, corporations, faculty and staff, foundations, friends, organizations, parents, and trustees and directors. Alumni additionally are listed by class year.

Within these broad groups, donors are further classified by giving level. These giving levels are:

Founder's Club	cumulative lifetime gifts of \$25,000 or more
President's Club	gifts of \$1,000 or more
Leader	gifts of \$500 to \$999
Pacesetter	gifts of \$250 to \$499
Centurion	gifts of \$100 to \$249
Pioneer	gifts of up to \$99
Robin Hood Oak	members have made a planned gift or provision for ESF in their estate plan
1911 Society	annual unrestricted gifts of \$1,911 or more

Employer matching gifts are not included in the total of an individual's gift. Employers are listed separately along with other corporate donors.

Individual gift totals are cumulative for the year if more than one gift was made, regardless of the purpose of the gift. For example, an alumnus who made a gift of \$250 to the Annual Fund and another gift of \$250 to the Syracuse Pulp and Paper Foundation would be listed once in the "Leader" category.

Alumni Association annual dues are not included in this honor roll. Dues are not considered by the Internal Revenue Service to be tax deductible, in contrast to gifts to the Annual Fund or other charitable programs.

We have made every effort to ensure this list is comprehensive and accurate. Any errors of omission or fact should be reported in writing, by telephone at 315-470-6683 or by email to gifts@esf.edu

Office of Development
204 Bray Hall
SUNY-ESF
1 Forestry Drive
Syracuse, NY 13210

Founder's Club – Cumulative lifetime gifts of \$25,000 or more

ABB, Inc.
Richard J. Ahearn '74
Ahlstrom Machinery, Inc.
Albany International Corporation
Maurice M. Alexander '40
Domenico Annese '41
Appleton Papers, Inc.
Curtis H. Bauer '50
Cathrine C. Baxter
William R. Bentley
Blasland, Bouck & Lee, Inc.
Olin D. '51 & Grace Bockes
Bowater, Inc.
Bristol-Myers Squibb Company
John W. '52 & Elizabeth Brooks
Henry H. Buckley Foundation
Buckman Laboratories, Inc.
Gabriel F. '51 & Kay Buschle
Ann Castagnozzi
Zena Celke
Central National-Gottesman, Inc.
Champion International Corporation
CNY Community Foundation
Consolidated Papers Foundation, Inc.
Daniel P. Cooke '55
Carlton W. Dence '47*
Eastman Kodak Company
Engelhard Corporation
ESF Alumni Association
Jesse M. '79 & Elizabeth C. Mitchell Fink '79
Garden State Paper Company
Georgia-Pacific Corporation
Richard D. Greenfield
Richard H. '60 & Patricia Gustafson
Estate of Helen R. Kennedy

Gutchess Lumber Company
Paul Haczela
Harden Furniture, Inc.
William Harmon '50*
Hercules, Inc.
HSBC North America
IMERYS
International Paper Company Foundation
James River Corporation Foundation
Yun J. Jen '51
Dale & Vera Johnson
Kappa Phi Delta Fraternity
Scott Kasproicz '78
Key Bank of CNY/Key Corp
Alfred E. Komar '50
George W. Lee '47
George W. Lee Jr.
Edward F. '42 & Edna Littlehales
Gratia Lowe
John & Candace Marsellus
Nancy A. Mayer '71
Mead Westvaco Corporation
Metso Paper, Inc.
Marion W. Meyer
Mohawk Paper Mills, Inc.
Edward K. Mullen '47
Nalco Chemical Company
National Starch and Chemical Corporation
Elizabeth H. Naumburg
The Newark Group
The Niagara Mohawk Foundation
O'Brien & Gere Engineers
Claude & Meira Penchina
Burton Perry III
P.H. Glatfelter Company

Charles E. Pound '41
William L. Sammons
Robert M. Sand '50
Richard C. Saunders '50
Harriet Schwarzer
Walter A. Sherman '37
Silicon Graphics, Inc.
Henrietta Simeone
Raymond M. Smith '52
Walter P. Smith '54
Solvay Paperboard
Southern Container Corporation
Specialty Minerals
L&JG Stickley, Inc.
Elmer K. Stilbert '39
Edna Bailey Sussman Fund
Walter Sutton
Ralph & Iris Szwarc
Rina Szwarc
Arne I. Thomsson '50
Dale Travis Associates, Inc.
William H. Trice '55
Undergraduate Student Association
Union Camp Corporation
The Walbridge Fund, Ltd.
M.J. Van Witsen
Voith Paper
Richard J. '78 & Lonny Watro
Louise Wendel
Westvaco Foundation
Weyerhaeuser Company Foundation
Xerox Corporation
Yang Family Foundation
Chin S. Yang '84

Robin Hood Oak Society – A planned gift or provision for ESF in an estate plan

John M. Adams '82	Andrew S. Gacek '00	Edward F. '42 and Edna Littlehales '42	Barbara R. Schiff '92
Bryan Airel '94	Shawn P. Gardner '92	Richard E. A. Lyon '51	Bruce S. Schneider '57
Joanne B. Arany '85	Paul F. Glassman '76	Barry F. Markowitz '95	Willard F. Schroeder '40
Vance A. Barr '86	Nathan B. Golub '39	Nancy A. Mayer '71	Russell J. Semeraro MD '58
Bernard C. Becker '41	George M. Griffith '85	Marion W. Meyer	Russell F. Seus '77
Gary R. Beyerman '69	Eric Grossmann '80	Keith T. Morris '82	Bruce C. Shelley '70
Olin D. Bockes '51	Richard H. Gustafson '60	Joseph A. Mukam Fotsing '01	Walter A. Sherman '37
Richard R. Capozza Esq. '88	David R. Hill '76	Charles A. Osborn '72	Mari L. Shinohara '94
Patrick R. Carraher '80	Ronald K. Hollister '58	Samuel R. Parmelee '40	Walter P. Smith '54
James E. Coufal '60	Jay A. Janson '84	David R. Paul '68	Raymond W. Snyder '52
Charles W. Cross '63	Sheri Lynn Jazembak '93	Harrison H. Payne '50	Elmer K. Stilbert '39
George W. Curry	Thomas W. Karig '92	Whitney F. Pettersen '78	David L. Sturges '94
Brian L. Cypher '81	Robert B. Kinstrey '67	Charles E. Pound Sr. '41	Siripun Taweasuk '01
Ellen A. Cypher '81	Edward P. Kohler '53	Everett R. Quackenbush Jr. '83	William R. Taylor '48
David B. Daubert '67	Alfred E. Komar '50	Clyde D. Robbins '58	Corleen J. Thompson '66
Christopher K. Dermott '97	David S. Larrabee '59	David H. Robinson '71	William T. Voigt '42
William J. Fitzner '39	George W. Lee Sr. '47	Norman E. Roth '74	Ellen B. Warner '78
Phillip G. Freeman '90	Susan M. Leven '84	Laurence E. Russell '38	Francis P. Wasik '78

1911 Society – Annual unrestricted gift of \$1,911 or more

Blasland, Bouck & Lee, Inc.	Darlene Kerr	Charles & Elsbeth Morgan	Raymond M. Smith '52
Richard J. Ahearn '74	Arthur H. Lambert Jr. '50	Elizabeth B. Mosher	Walter P. Smith '54
Edward J. Audi	Alan W. Larson '60	Edward K. Mullen '47	William R. Taylor '48
William R. Bentley	George W. Lee Sr. '47	Cornelius B. & Joanne Murphy	Arne I. Thomsson '50
Michael R. Brower	Edward F. '42 & Edna Littlehales	Walter S. Riley '50	William H. Trice '55
Stephen Y. L. Chow	Candace & John Marsellus	Clyde D. Robbins '58	Ross S. Whaley
Douglas L. Cotton	Lowell W. McBurney '85	Robert M. Sand '50	J. Warren Young
Jerome H. Freeman '36	William L. McGarry Jr.	George J. Schunck	
Robert M. Hick Jr. '54	James P. McKenna '77	Herbert Seidel '43	

Alumni

1927 <i>Centurion</i> Harold Bush	<i>Pacesetter</i> Lawrence J. Borger	1939 <i>Founder's Club</i> Elmer K. Stilbert	<i>Centurion</i> Julien O. Boesinger	<i>Pioneer</i> Allan E. Anderson	Francis H. Felts
1930 <i>Centurion</i> Clarence A. Petty	<i>Centurion</i> W. Leslie Robinette	<i>President's Club</i> Nathan B. Golub	Vladimir Breuer	Frank J. Kovarik	Robert B. Hotaling
1931 <i>Centurion</i> Zigmond A. Zasada	<i>Pioneer</i> Leonard G. Wheeler	<i>Centurion</i> Richard B. Bateman	Clarence A. Lankton	Howard C. Miller	Donald E. Jameson
1935 <i>Centurion</i> George M. Judson	<i>Pioneer</i> Robert H. Loweth	Frederick P. Heil	Ralph J. Stettner	Sidney Mintzer	Benjamin Seplowin
1936 <i>President's Club</i> Jerome H. Freeman	1938 <i>Leader</i> Samuel Grober	Samuel A. Newman	<i>Pioneer</i> Frank Butcher Barick	Alfred Obrist	Charles J. Witter
Richard E. Griffith	<i>Centurion</i> Elmer E. Fisk	Jack B. Weinger	Charles A. Bassemir	Albert W. Roberts	1943 <i>President's Club</i> Herbert Seidel
<i>Centurion</i> Malcolm G. Lyon	<i>Centurion</i> Charles E. Rapp	1940 <i>Founder's Club</i> Maurice M. Alexander	Leon L. Gallin	1942 <i>Founder's Club</i> Edward F. Littlehales	<i>Pacesetter</i> Joseph J. Schwenkler
1937 <i>Founder's Club</i> Walter A. Sherman	<i>Pioneer</i> Robert Byron Williams	George M. Renner	Victor J. Harwick	<i>Centurion</i> Charles M. Armour	Charles H. Chapman
	<i>Centurion</i> Gordon S. Bowen	1941 <i>Founder's Club</i> Domenico Annese	Samuel R. Parmelee	George B. Creamer	<i>Centurion</i> Anthony J. Bellucci
	Neil Croom	Charles E. Pound	<i>Pacesetter</i> Norman S. Eppell	John H. Farrell	Richard M. Berry
	George K. Greminger	<i>Centurion</i> Ralph J. Bartholomew	<i>Centurion</i> Ralph J. Bartholomew	Solomon H. Krasney	Clifford Curtis Booth
	Samuel N. McCain	<i>Leader</i> William Bush Cubby	Zygmund Lenchert	Neil J. Stout	Bernard Fradin
			Volkmar U. Megnin	William T. Voigt	Keith G. Hine
			Robert H. Vernooy	<i>Pioneer</i> Oliver A. Anderson	John C. Parsell
				William S. Brenneman	Robert J. Roggie
				Edward A. Currier	
				Howard J. Dean	
				John Fedkiw	

Alumni continued

Pioneer

Edward G. Ellenberg
Bertram Husch
John R. Lavigne
Chauncey R. Nichols
George E. Prokupek
John H. Schumacher
Richard F. Watt
Roger Wells

1944

Centurion

George Kitazawa
Stanford Perry

Pioneer

Robert S. Kellar

1945

Centurion

Robert L. Youngs

Pioneer

Morton J. Schloss

1946

Pioneer

Stanton G. Ernst

1947

Founder's Club

Carlton W. Dence
George W. Lee
Edward K. Mullen

President's Club

Alan W. Oliner
Robert Wall
Leo Wiener

Pacesetter

George A. Oechsle

Centurion

Robert F. Bangert
David M. Hickok
Robert E. Wolf

Pioneer

Arthur A. Bernhardt
Gould J. Hoyt
George P. Katibah

1948

President's Club

William R. Taylor

Pacesetter

Phillip L. Knapp

Centurion

Daniel M. Baris
Lawrence H. Brown
Arnold T. Drooz
Edward N. Hanley
Alexander E. Holstein
James B. Sisson
Barbara H. Wortley
Harold J. Zimmerman

Pioneer

David L. Born
John A. Buchanan
Robert A. Clift

Donald F. Everett
Willard V. Fichtel
John D. Hankey
K. Ram Malhotra
Bradford E. Monk
Arthur R. Perrin
Lawrence A.
Schimerman
Paul Tobler

1949

Pacesetter

Robert T. Shone

Centurion

George R. Armstrong
George L. Booth
Charles D. Doris
William J. Hall
Ward C. Hitchings
Victor J. Jarm
Meyer Laskin
J. Kenneth McIntosh
Thomas E. Rider
Roger W. Strauss
Bruce H. Tynan

Pioneer

Warren W.
Christopherson
Harry C. Coppel
Robert R. Eastment
Robert P. Green
Robert E. Ingison
Fred L. Johnson
Leslie W. Kick
Paul R. Krihak
Charles N. Lee
Richard J. Lloyd
John R. Meyering
Alan W. Mueser
Edward K. Nissen
Richard J. O'Brien
C. Erwin Rice
Walton B. Sabin
Herbert Schnipper
Robert L. Woerner

1950

Founder's Club

Curtis H. Bauer
William Harmon*
Alfred E. Komar
Robert M. Sand
Richard C. Saunders
Arne I. Thomsson
President's Club
Donald E. Dorn
Arthur R. Eschner
Arthur H. Lambert
Walter S. Riley
Frederick J. Slater

Leader

Joseph H. Shuttleworth

Pacesetter

Harrison H. Payne
Clinton O. Schueler

Howard F. Thurman
Aubrey E. Wylie

Centurion

Louis G. Catalanotto
Sidney Diamond
Amby S. Emmick
James A. Geryal
Richard J. Krueger
Frank J. Mack
Walter R. McAllester
Leslie G. McCowan
James O'Keefe
George A. Roberts
Fred W. Seybold
Kenneth M. Watson
John S. Wenzel

Pioneer

Gordon R. Anderson
Arthur Aronoff
C. Otto Berggren
John M. Brown
Charles J. Carome
August L.

Christopherson
Carlton M. Church
William S. Dunn
Julius J. Eckert
Wilson F. Edinger
Dean Harding
Duncan A. Harkin
David E. Heldt
George P. Howard
Ralph B. Johnson
Paul C. Lambert
Albert C. Lawrence
Richard Mark
Bernhard K. Mayer
William Nagy
Leonard E. Partelow
James D. Pelkey
Donald E. Peterson
James O. Preston
Edward H. Rickels
Robert J. Ruch
Necmi Sanyer
Elmer G. Shafer*
Glenn Storms
Gerald W. Van Gilst
Christen Yang

1951

Founder's Club

Olin Bockes
Gabriel F. Buschle
Yun J. Jen

President's Club

Carl A. Miller
J. Paul Owens
Paul W. Ryan

Leader

John T. Early
Richard E. A. Lyon
George A. Vossler

Pacesetter

Philip G. Bauer
Alexander Coutras
Carl E. Darrow
Craig H. Shand

Centurion

Kenneth Arnold
Roy C. Beckwith
Gilbert P. Cameron
Phillip C. Capone
Joseph S. Gawron
Donald M. Gilmore
Donald S. Greif
George A. Hermans
L. Richard Hornbeck
Francis J. Kohring
William B. Lowe
Robert A. Reyneke
Richard C. Tarr
William C. Vernam
Edwin A. Vonderheide

Pioneer

Edward R. Berman
William D. Boyer
Creighton C. Fee
Donald H. Fry
Francis B. Gallagher
David L. Hadley
Jack J. Karnig
Thomas A. McCartney
Winfield L. McGrath
Robert J. Mikula
Donald R. Patten
Robert R. Peck
Calvin F. Reynolds
William E. Richoll
Fred D. Richter
James S. Sabin
Joseph A. Slattery
Marshall N. Smith
Frederick B. Wardwell
Robert C. Whitney
Frank M. Yasinski
Joseph M. Zaremba

1952

Founder's Club

Raymond M. Smith
John W. Brooks
President's Club
William F. Duggleby
James D. Seaman

Centurion

William A. Cowan
James G. Crowley
Peter F. Guest
Charles F. Horton
Donald J. Jensen
John R. Knapp
Robert Levine
Robert D. Lindeman
John W. Merrick
John S. Porter
Howard S. Rothe

Howard P. Schwartz
Robert J. Shimer
Raymond W. Snyder
Henry D. Struve
Donald G. Ward
Merrill B. Wish
David L. Wood

Pioneer

Joseph Abelson
Arnold L. Bauerle
Kenneth Gordon
Borchgrevink
Ira L. Bray
Robert D. Burgess
Joseph L. Camarda
Ted R. Carson
Robert L. Chamberlain
Raymond A. Currier
Paul L. Daniell
Robert L. Evans
William T. Gladstone
Warren L. Hartman
Jay G. Hutchinson
Ronald M. Lanner
Arnold L. Larsen
Paul R. Martin
Roy V. McCready
Chester Arthur McKee
Wayne J. Smith
Lloyd T. Soule
Leo W. Welch

1953

President's Club

Edmond C. Kagi

Leader

Robert L. Smuts

Pacesetter

Robert A. Clark
George W. Nile
John P. Vimmerstedt

Centurion

Terrence J. Boyle
Emlen H. Faerber
Stephen P. Kirby
Edward P. Kohler
Stanley J. Marks
Donald L.

McConaughy
Norman H. Miner
Harold E. Schumm
William C. Skillman
Philip Suters
Sydney J. Walker

Pioneer

William F. Aloisi
Frank J. Bencze
Robert W. Campbell
Giustino D. Capella
Wilbur H. Carey
Richard D. Douglas
Robert W. Frevert
Bernard J. Galvin
Carl O. Hansen

Richard N. Hess
Allan J. Hessel
Edgar A. Kupillas
William E. Larson
William B. Leak
William P. Nagel
Dickinson H. Pellissier
Robert J. Purick
Guenther K. Weidle
Henry P. Wilhelmi
Lawrence G. Wilke

1954

Founder's Club

Walter P. Smith

President's Club

Robert M. Hick

Leader

Gordon C. DeAngelo

Pacesetter

Ellis B. Cowling

Centurion

Philip D. Case
William C. Fessel
Basil S. Goerner
Robert W. Haines
Thomas L. Havill
James F. Hern
Blair A. Knapp
George T. Lambe
Richard M. McEvoy
Donald C. Moller
Paul F. Sardella
Ernest A. Schwab
Peter J. Schwartz
George Sears
Richard Silliman
Gerard T. Sowinski
Murray F. Valentine
Hawley L.
Woolschlager

Pioneer

Robert W. Bradbury
Nelson F. Button
Robert W. Carpenter
Robert F. Caswell
Philip C. Clark
Harry A. Cornell
Robert D. Crossley
Stuart A. Dalheim
Charles E. Eager
George E. Fellows
James R. Field
Donald C. Fuller
Frank W. Fuller
George Hauser
David H. Kimbrell
William A. Kissam
Trygve C. Lucken
Charles H. Mayhood
Robert G. Reimann
George H. Rosenfield
William R. Smith

Alumni continued

Igor Sobolev
Arthur E. Stanton
Paul A. Stevens
Gilbert Tardif
Edward F. White
Richard F. Wolf
Malcolm L. Young
Robert H. Zulch

1955

Founder's Club

Daniel Cooke
William H. Trice

Leader

Ralph H. Burroughs

Pacesetter

James B. Goodwin
Henry M. Greenhouse
Robert W. Ingham
Dieter F. A. Kutscha

Centurion

Robert W. Bernhardt
Deane H. Brink
Sergi L. Demchuk
John E. Grammel
William C.

Kratzenstein
Charles L. Mahoney
William P. Petro
Richard G. Serino
Edward H. Stone

Pioneer

Gene E. Allen
Robert Barker
Howard W. Burnett
Louis-Philippe
Clermont
Barry S. Colassard
George C. Finck
James M. Harper
Larry Isaacson
Keith B. Johnson
Thomas C. Luche
Dan Meyer

Timothy G. O'Keefe
Daniel J. O'Reardon
Daniel B. Place
Douglas W. Scharbach
Donald A. Schultz
Robert E. Schultz
Robert T. Steinholtz
James M. Trappe
Carl M. Van Husen
Peter J. Zullo

1955

President's Club

Donald L. Ferlow

Leader

Gino P. Biasi
Robert W. Davidson

Centurion

William B. Ayars
Roger M. Baker
Thomas J. Gaylord

James R. LaCasce
Raymond G. Luber
George E. Watson

Pioneer

Frank W. Bassett
George S. Braman
Richard L. Carpenter
James J. Curley
John E. English
John W. Follis
Thomas W. Hodges
William J. Hohns
Donald P. Lawton
Jack E. Lukins
Louis C. Oneil
Zenon Prusas
John D. Roberts
Walter B. Sullivan
Robert L. Talerico
Robert C. Van Aken
Roger D. Ward

1957

President's Club

Norman A. Richards
Donald R. Thomas

Centurion

Karl K. Blixt
Harold A. Boyle
Stanley D. Butzer
John R. Greene
Edward D. Holmes
Robert E. Manning
Walter F. Megahan
Ralph F. Mumme
Norman F. Nelson
George Y. Nishimoto
Richard D. Parker
John A. Pitcher
Wesley M. Rickard
Johannes Smid
Terry L. Towner
Willard G. Ulmer
Walter F. Yamrick

Pioneer

Douglas L. Andrews
Paul H. Arndt
Rodney Allen Barber
Nicky Beredjick
Robert F. Denny
Thomas O. Farrenkopf
Scott K. Gray
Stanley Holland
Leo A. Hosenfeld
Ralph I. Jurgensen
Richard M. Klingaman
Robert C. Margiloff
Paul R. Sand
Donald R. Schumacher
James H. Shaw
Frank C. Smith
William F. Stolte
Jerry R. Williams
Barton E. Zeh

1958

President's Club

Clyde D. Robbins

Leader

Richard T. Brewster
Harold E. Parker

Pacesetter

Robert H. Brock
Paul G. Bucklin
Philip J. Kohlbrenner
Alfred Schainholz
William S. Smeltzer

Centurion

Gordon L. Adams
Friedrich J. Aufschlager
Robert M. Bauer
Herbert D. Belknap
William L. Betts
Robert M. Bownes
A. Vincent Cerny
Geoffrey P. Conine
Wilfred A. Cote
Donald R. Cowles
Thomas K. Daughtrey
David Deretchin
Robert A. Dykes
Henry P. Gore
Peter T. Gregory
Joseph R. Haug
Clyde M. Hunt
Anton Jurecic
Otto W. Kratzenberg
Jerome J. McArdle
Arthur H. Mittelstaedt
Andrew P. Nelson
Richard L. Neu
Karl E. Nisoff
Ralph D. Nyland
Richard J. Patrick
Eric P. Rasmussen
Kenneth E. Reymers
James F. Ring
William S. Ringwall
Russell J. Semeraro
Timothy M. Smith
John R. Stell
Richard S. Sullivan
Roger A. Swanson
Frederick H.

Thompson
George Treier
Curtis A. Wilksen
Karl E. Wolter

1959

President's Club

Ronald W. Becker
Dale L. Travis

Leader

Edward A. Karsch

Pacesetter

James C. Hamer
Michael H. Jones
Norman P. Kutscha

David T. Landers

Centurion

Frank W. Bulsiewicz
Donald G. Fox
Charles H. Frommer
Fred J. Fuller
Richard E. Garrett
Edward H. Gleason
Robert C. Nowack
Harry W. Porter
David E. White
John F. Wixted

Pioneer

James H. Allen
Charles F. Brooks
Lawrence P. Brown
Karl D. Chasey
David E. Clark
Bruce R. Dayton
John H. Dean
Charles W. Donner
R. Kent Edwards
Leonard D. Fialko
Royal C. Garlock
Anthony W. Kotz
Richard W. Perkins
Donald H. Potter
Jerome M. Rose
John M. Roubie
Richard G. Rounseville
Salvins Strods
Robert A. Ulbrich
Jan B. Vrooman
John A. Winieski
Robert W. Wright
Peter W. Zubal

1960

Founder's Club

Richard H. Gustafson

President's Club

Alan W. Larson

Leader

Leroy Z. Page

Pacesetter

Bruce F. Hearn
Joseph A. Wray

Centurion

Howard G. Converse
James E. Coufal
Frank C. Shirley
Gerhard R. Tegeder
Ronald V. Volk

Pioneer

Gene S. Bergoffen
Charles A. Foster
Roger W. Hutchinson
Philip W. Kennedy
Joseph L. Landino
Mark J. Marquisee
George L. Momberger
George W. Noble
Warren A. Richardson
George J. Schmitt

David M. Sharpe
Olof Erling Swanson
J. Daniel Wojcik

1961

Pacesetter

David R. Haskins
Martin F. Jurgensen
Tom L. Ryan

Centurion

Carl H. Goodwin
Michael Gritz
Raymond J. Kordish
Lester L. Straw

Pioneer

Raymond D. Bourdeau
F. Joseph Brang
Jeffrey G. Carlen
Robert C. Ferguson
Alan H. Hartig
William Krichbaum
Arnold H. Lanckton
Douglas K. Lehmann
David D. Parker
Rodney J. Reining
John E. Tiffany
Luise E. Walker
Larry E. Weeks

1962

President's Club

Eugene A. Truderung

Centurion

G. Richard Dodge
Klaus W. O. Kummer
Christopher L. Murphy
Carl R. Sager

Pioneer

Edward C. Boardman
Theodore Crovello
Robert W. H. Gunther
Richard Jagels
James S. Kennedy
James D. McKinley
Robert A. Patsiga
John M. Radosta
John E. Tripp
Franklin J. Waldo
Edwin H. White
Gerald R. Yocum

1963

Pacesetter

Hermann E. Welm
Gerald W. Zimmer

Centurion

Alan H. Barbour
Joseph J. Batelka
Charles W. Cross
Lester J. Lee
Edward J. Olinger
Donald U. Peet
John R. Peters
Colin A. Rabe
Stephen S. Robinson

William P. Stevens
Richard A. Usanis
Stephen G. Weatherly

Pioneer

James M. Anderson
Norman G. Baker
Douglas L. Bartow
Gary Gene Bouplon
Keith A. Butters
Frederick J. Gerty
Lawrence S. Gordon
Richard M. Gray
Stuart R. Halpert
David L. Hathway
Daniel B. Houston
John D. Kegg
Stephanie H.
Labumbard
Melvin A. Lipson
John A. Locke
Stanley John Martin
Ithamar E. Pollak
William L. Quartz
Edward B. Rickford
Thomas E. Rogers
Douglas R. Simmons
Chen Jen Su
Krishna P. Vemuri
David J. Zlomek

1964

President's Club

Raymond J. Nozynski

Pacesetter

Harry A. Barber
James M. Colby
Christopher L. Hart
Thomas E. Okoniewski
Robert V. Patrick
Carl E. Vogt
Louis N. Wood

Centurion

Bruce R. Brownell
H. Jesse Dubin
Alan C. Eachus
Susan Mead Hughson
Alan B. Kubarek
Andrew D. Root
Sue M. Rosenstrauch
James K. Selkirk
James B. Wilson

Pioneer

Harold G. Brotzman
Stephen W. Buechner
Harold E. Burghart
Charles H. Calhoun
Richard J. Cipperly
Glenn M. Cole
Chad E. Covey
Richard G. Croop
George D. Dohn
Carl S. Golas
Dieter Gruenwoldt
Paul L. Haggard

Alumni continued

William T. Hauck
Donald Hennig
Raymond E. King
Leonard H.
Knabelkamp
Michael J. Kocurek
Donald J. Kopf
Carl J. Kruger
Geoffrey W. Laidman
Philip W. Larson
James H. Northway
Bruce R. O'Hara
Richard J. Okun
William J. Schell
Hermann F. Schulz
Garth L. Wilkes

1965

Centurion

Daniel E. Chappelle
James E. Cheesman
Robert Lee Edmonds
Thomas A. Horbett
David W. Hulse
Donald E. Neuroth
James W. Tinney

Pioneer

Norman E. Bell
Anthony J. Cardwell
Richard A.

Cunningham
Robert G. Fowler
Norman C. Grenell
Anthony N. Jeric
Paul A. Kretser
William M. Larmon
Bruce A. Martin
Eckart Mathias
Eugene J. Miller
John G. Miller
Leslie G. Monostory
David A. Moorhead
Dean A. Phelps
Jerry R. Pierce
William G. Saalman
John B. Slater
Martin E. Sorkin
Ralph Larry
Vanderveer
Jason T. Welsch
Paul V. Wicker

1966

Pacesetter

David C. Randall
Jock Robie

Centurion

Peter D. Aller
Robert S. Bond
Robert W. Bryant
Steven P. Clark
Frank J. D. Agostino
Jeffrey A. Gebrian
Edward R. Hahn
George W. Hebard

Richard G. Marko
David M. Norris
M. Gill Petri
Anatole Sarko
Stephen J. Stutzbach
Robert Y. T. Suen
William N. Wandmacher

Pioneer

John M. Ackerman
Stuart D. Alexander
Frank C. Basile
Donald Fraser Behrend
Parshall B. Bush
Ronald T. Collins
Malcolm W. Coulter
Terry J. Dailey
Raymond E. Davis
Michael G. DiNunzio
David L. Franke
Matthew J. Giordono
Linda K. Halik
Daniel N. Johanson
John J. Keefe
Dwayne K. Klossner
Duncan J. Mackey
Paul Menge
Thomas S. Patrick
Thomas R. Pigage
Walter V. Purnell
Neil A. Redding
Susan Pennoyer Robie
Erwin R. Ruckel
Thomas J. Spittler
Michael J. Storey
James R. Tremlett
Neil R. White

1967

Pacesetter

Paul F. Ebersbach

Centurion

Russell L. Benzin
Joan Kuo Chia
Jon Robert Crofoot
Michael J. George
Richard L. Gray
Henry M. Ortmann
Michael A. Tobias
Thomas A. White

Pioneer

Stephen M. Arnold
Daniel J. Avenir
Terry A. Beerman
William J. Bertrand
Donald M. Boone
Gary G. Brandow
Hubert W. F. Bunce
Albert W. Butkas
Dana C. Chapman
David B. Daubert
Douglas A. Day
Max S. Deutsch
Richard W. Elliott
Craig L. Fournier

Martin Grand
Richard E. Grebe
Richard W. Hatheway
John F. Jones
Jared P. Kennish
Edward J. Lengyel
Richard K. Lyons
Joseph H. Nalbach
James F. Noyes
Lee E. Pennock
Gary F. Regan
Frank T. Rose
Robert W. Sauer
David D. Stout
Daniel A. Sulitka
Paul L. Sutton
John E. Torpy
David P. Tousignant
David L. Tyler
John W. Wagner

1968

President's Club

Jack A. Belmont
Lee D. Berry
Douglas G. Dellmore

Leader

Thomas W. Balsley
David J. Bennett

Pacesetter

Clifford W. Buckley
Gilbert L. Comstock
Thomas Urbanik

Centurion

James C. Andrews
John M. Biasuzzi
Michael J. Birmingham
Paul J. Budris
Joseph F. Cantwell
Terrence J. DeWan
David R. Eldredge
William E. Houck
Charles J. Kowalski
James M. Snyder
Mark D. Sprague
David W. Tessier
Peter D. Wallace

Pioneer

Thomas E. Amidon
Philip J. Arthur
Dale R. Baker
Erna Hamel Baumann
Douglas R. Brackett
Robert J. Bragan
Russell M. Breiner
Richard T. Colesante
Robert Driesen
William J. Elgin
John N. Faulring
Michael L. Fay
George Frey
Lawrence R. Gersh
Edward C. Hartranft
Frederick C. Jackson

Durando Miller
Edward F. Moldenke
Daniel G. Orband
Janis Petriceks
Ronald A. Polgar
Barry D. Riordan
Edward G. Schmitt
James R. Smith
Louis F. Soracco
Stephen E. Springer
John L. Sullivan
John Van Iderstine
Jerry E. Wallace
Donald L. Wells
George B. Wiersma
Dennis J. Wilson
Gary W. Zinn

1969

Leader

Joseph A. Hibbard

Pacesetter

Ronald N. Hill
M. William Haskins

Centurion

Lloyd B. Adams
Robert P. Burnett
R. Allen Falls
Jeffrey M. Frohn
Michael J. Geiss
James A. Hill
Michael C. McCloskey
William P. Metzgar
William L. Murray
James M. Rausa
Makoto Shinohara

Pioneer

S. Jeffrey Anthony
Jane Elizabeth Bailey
James L. Bartlett
Crandall A. Benson
Charles E. Boone
John Joseph Cesar
Walter L. Cook
Thomas M. Cutter
Anthony D. Debboli
Ronald J. Eby
David B. Emerson
Thomas L. Engdahl
Patrick Fenn
Kenneth E. Finch
Dwight D. Folts
Nicholas E. Gardinier
Allan E. Garner
Frederic A. Gros
Peter W. Grupe
Orest Hrycyk
Samuel J. Ippolito
Wayne W. Jones
Richard P. Lewis
Billy L. Morris
William B. Morse
Roger C. Mort
Gene L. Padgham

James R. Peek
Daniel J. Pihlblad
Bruce D. Reid
Timothy P. Roberts
Gary F. Salmon
Robert G. Salsbury
Richard A. Schwab
Paul A. Schwonke
Louis J. Sebesta
John D. Solan
George R. Steen
Robert A. Stehn
Mark N. Tappen
Carl P. Wiedemann
David J. Wohlbach

1970

Leader

Daniel C. Wightman

Pacesetter

David M. Atwood
Bruce C. Shelley

Centurion

Sidney E. Balch
Terry L. Bluhm
John G. Boreman
Lenford C. Carey
Knowlton C. Foote
David R. Hall
Jack R. Kingsley
Mark K. Levanway
Lawrence F. McGrail
Michael E. Potter
Robert E. Simmonds
Gary L. Speenburgh
Robin D. Worcester

Pioneer

James A. Beil
Norman K. Booth
David J. Carleo
Thomas W. Catchpole
Richard P. Copp
William R. Diedrichs
James L. Dillon
Richard T. Doyle
Robert J. Dunn
William G. Ebersbach
Dennis S. Fellows
Brian Fenlon
Richard H. Genter
George M. Green
Sam D. Hackett
Gordon M. Heisler
Robert E. Howard
Robert P. Jones
Gary M. Kelly
Lawrence J. Kieffer
Eugene M. Lipman
Kenneth V. Magdziuk
Frank W. Magee
Susan Damon Morgan
Dennis R. Parent
Richard T. Rickenbrode
Stuart H. Sachs

Robert J. Sellar
Brian C. Skinner
James J. Smith
Stephen J. Smith
Marlene MacCormack
Hacinar Sorenson
Jamieson R. Steele
Wesley B. Stiles
David A. Szurley
Michael J. Vanderbles
Gary B. Will
Stephen C. Yorton

1971

Founder's Club

Nancy A. Mayer

Pacesetter

Keith S. Clark
Geoffrey K. Cummings

Kevin T. McLoughlin

David R. Mele

James M. Wheeler

Centurion

Linda M. Bergin
Werner R. Burkatt
Franklin D. Cean
James Deines
D. Clayton Grove
David R. Hayner
David O. Hearne
Lloyd E. Peterson
K. Adele Rossi-Marsh
Wayne H. Schacher
Daniel R. Walker
George R. Wells
Owen R. Williams

Pioneer

Bill H. Ashley
Fred C. Ballantyne
Michael D. Bamberger
David A. Bowman
Frederick R. Branton
Karl R. Braun
John F. Brennan
Joseph J. Buschynski
Douglas G. Cerretani
Donald F. Charles
Raymond P. Curran
Kristi L. Currier
Theodore V. Currier
E. Michael Ermer
Kenneth A. Gifford
Walter E. Grajko
Terrence M. Hammill
John T. Hastings
Samuel S. Hirschey
Craig R. Johnson
Jay A. Johnson
Paul J. Kulick
Roman S. Kulik
Steven Ira Launer
Joseph J. Lopatynski
Edwin S. Malesky
Peter A. Mikolaitis

Alumni continued

Thayer A. Miller
 Peter G. Moller
 Rob D. Mrowka
 Timothy J. Murphy
 Walter G. Neuhauser
 Philip R. Opdycke
 John L. Osinski
 Richard H. Powell
 Ronald F. Reed
 Thomas E. Reule
 Richard J. Roberts
 Peter J. Rzasa
 John F. Seifts
 Lynn A. Selden
 Robert M. Shafer
 Steven R. Shraeder
 Howard A. Simonin
 Gary W. Smith
 Israel Solon
 Vito J. Sparace
 John A. Steele
 Brian Vincent Todd
 Gary L. Tompkins
 John P. Virgona
 Thomas H. Wahl
 George J. Walter
 Patricia M. Walter
 Steven B. Watrous
 Leonard A. Zegment

1972

Leader

Richard S. Hawks
 John A. Thonet

Pacesetter

Edward J. Hogan

Centurion

Thomas F. Arnold
 James E. Biggane
 Daniel M. Birmingham
 Clifford F. Chetwin
 Gary A. Jacob
 Donald C. Keefer
 John L. Litzenger
 David J. Peckham
 Jeffrey L. Stucker
 Margaret R. Stucker
 Thomas L. Wendt
 David F. Witschi

Pioneer

Lewis P. Allen
 William F. Bones
 Peter D. Bourgois
 Alan W. Brown
 John P. Burton
 Mary L. Charbonneau
 Wilfred A. Cote
 David D. Cunningham
 Steven M. Dauber
 Claire Titcomb Ders
 Glen R. Doney
 Larry S. Flatau
 Dennis A. Gliotti
 James Goulet
 Randall J. Hirschey

Gregory G. Hoer
 Roy D. Hopke
 Paul A. Horgen
 Donald L. Hosenfeld
 Paul A. Ignatz
 Ken J. Kasprzyk
 Randall C. Kelly
 Kenniford G. Laing
 Robert E. Lamoy
 Paul G. MacDonald
 Anthony J. Miller
 David A. Molloy
 Cathy W. Neuner
 John Nieber
 Thomas M. Norton
 Darrell C. Osterhoudt
 R. Bruce Oswald
 Donald W. Pearson
 Paul M. Pillis
 Patricia A. Pingel
 Paul M. Rebis
 Thomas E. Rodencal
 Scott D. Shupe
 Leonard A. Smith
 Carl A. Thuesen
 John E. Turner
 Ross A. Virginia
 Curtis B. Ward
 Victor F. Wehnau
 William A. White
 Thomas H. Whitlow
 Fred G. Wilhelm
 Bruce R. Williamson
 Charles H. Youmell

1973

President's Club

Robert F. Thaisz

Pacesetter

John S. Gasiorowski
 Theodore P. Wagner
 Christopher L. Westbrook

Centurion

Randall P. Blass
 Gerald S. Campos
 Justin F. Culkowski
 William K. Kropelin
 Thomas J. Lynch
 David H. Meckler
 Christopher A. Miller
 John H. Mruz
 William L. Pryor
 James C. Shearer
 Robert R. Stevens

Pioneer

John H. Anlian
 Richard C. Bailey
 Thomas A. Barba
 Eudell C. Bivens
 Richard T. Brantigan
 Peter A. Breuer
 Michael D. Bryan
 David A. Bush
 Geoffrey A. Christoff

George L. Collins
 Barry E. Colman
 Dale A. Demler
 Robert E. Dieterich
 William J. Doran
 Carl W. Eller
 Thomas E. Fake
 David J. Francescotti
 Robert Geraci
 Michael T. Girvin
 Albert Gomolka
 Douglas H. Greiner
 David L. Hardin
 Stephen B. Jones
 Michael Jurkiewicz
 Larry E. Kahn
 Allen M. Kenderes
 Ronald F. Klossner
 Gregory A. Knowlton
 Thomas M. Koch
 Gerald A. Kostyk
 Kenneth D. Kugel
 Jack V. Kuney
 Edward C. Landau
 Thomas D. Lee
 Daniel Yui Leung Lui
 Steven A. March
 James B. Marean
 Robert L. Marzec
 Melvin L. Moore
 Edward F. Neuhauser
 Ray M. Oram
 Roy R. Pedersen
 Roberta L. Pickert
 Barbara S. Raffaldi
 Paul A. Ray
 Bruce E. Reichel
 Victoria Miles Smith
 Peter Spadinger
 Arnold E. Talgo
 Frederick M. Teigler
 William S. Todaro
 Michael H. Townsend
 DeLancey D. Wayne
 Dennis O. Weil

1974

Founder's Club

Richard J. Ahearn

President's Club

Alan M. Gordon
Pacesetter
 Philip M. Juravel
 Mark X. Lapierre
 Norman E. Roth
 Arthur J. Stipanovic

Centurion

Edward B. Clark
 Richard T. Dabruzzo
 George R. Hoffman
 Chin Chien Hsu
 Deborah Kapfer
 David R. Morgan
 Jon L. Roberts
 Barry N. Rosen

Pioneer

Jeffrey E. Barnes
 David F. Barone
 Stephen P. Bazan
 Marlene G. Berg
 Alan S. Bernard
 Mack W. Bixby
 Randal M. Brown
 Thomas P. Burns
 William M. Burry
 David A. Byers
 Stephen J. Byrne
 Donald A. Carr
 Blaine C. Cook
 Stephen E. Coupal
 Thomas F. Cuffney
 Margaret G. Culkowski
 Weston J. Davis
 Joseph A. Detor
 Richard P. Doering
 Salvatore Drogo
 Stephen Drown
 Walter L. Edmonds
 Ralph B. Edwards
 David R. Ellis
 Patrick S.A. Flood
 Christopher J. Fournier
 Judy A. Gilbert
 Thomas J. Hill
 Dennis Hlavac
 Barbara Honors
 Theodore I. Jerrett
 Thor L. Kaumeyer
 Francis J. Kelly
 John P. Kemp
 J. Michael Kennedy
 Matthew P. Killeen
 Roger L. Klaus
 William C. Kohler
 Craig S. Kominoski
 Robert W. Loveless
 Michael L. May
 John P. McTague
 Jeffrey D. Palmerton
 Richard G. Pancoe
 John Philbin
 Charles E. Pound
 David M. Rieger
 Robert G. Riley
 Craig L. Rosenbloom
 Stephen K. Ruoff
 Richard M. Rybinski
 Joseph H. Sahl
 Donald P. Schaufler
 Robert A. Schrader
 David K. Seim
 Mark E. Sengenberger
 Jean Ann Shaback
 David F. Smolinsky
 Dianne Rague Spring
 Steve M. Stash
 Stanley D. Swierz
 Theodore S. Torpy
 Martin Van Der Grinten
 Antonio E. Vieira

Diane J. Walter
 John P. Warnecke
 Warren L. Westlake
 John A. Wozniak
 Stephen M. Young
 Joseph J. Zeglen

1975

President's Club

George H. Ellis
 Jean-Pierre Moreau

Pacesetter

Moira B. Glaccum
 Michael B. Maloney
 A. Christopher Sandstrom

Centurion

James F. Druck
 Peter J. Frawley
 Stephen D. Goodman
 Michael R. Harnett
 Scott J. Josiah
 Carl R. Kelemen
 Robin W. Kimmerer
 Mary C. Kropelin
 Paul W. Leuzzi
 Robert R. Quinn
 John R. Smith
 Edward J. Wright

Pioneer

David Armlovich
 Leslie Johnson Barnes
 Kenneth L. Bisogni
 David I. Blaushild
 Gregory A. Chase
 Richard P. Cincotta
 James J. Coulombe
 Manley C. Crane
 James H. Culbert
 Anne S. Cumella
 Robert S. Cumella
 Edward G. Czysoson
 John E. Ferrell
 Robin Cole Foss
 Gary L. Foster
 Allen J. Frishman
 Stephen L. Fuller
 Warren J. Goercke
 Steven W. Haerter
 Ted Oliver Hale
 Robert W. Hard
 Judith A. Henningson
 David W. Hicks
 Spencer Guy Jarrett
 Kevin J. Kehoe
 Werner L. Kist
 Edward H. Klass
 Kenneth R. Kluck
 Robert W. Knapp
 Harold J. Lackey
 James P. Lawler
 Lois C. Levitan
 Charles K. Likel
 Don S. Maclachlan
 Daniel R. Mahns

David F. Majewicz
 Russell D. McCullough
 Jeffrey L. Mentley
 Brant N. Miller
 Benjamin W. Morey
 Jack A. Nasca
 Douglas L. Northrup
 Harvey Nusbaum
 Patrick F. Opper
 Thomas F. Roselius
 Daniel L. Schallmo
 Gary R. Schoonmaker
 Stephen L. Scofield
 William A. Snyder
 Steven G. Streitel
 Robert T. Strong
 Robert L. Uebler
 Carey E. Vasey
 Roland R. Vosburgh
 Francis J. Walton
 David A. Warne
 Elizabeth M. Warner
 David A. Weeks
 George F. Weick
 Susan Lynn Whittemore
 John S. Winiarski
 Thomas M. Zeller

1976

President's Club

Richard M. Baskin
 Christine Wendel

Pacesetter

Robert S. Danskin
 Robert R. Evans
 Mary Butler Liddell
 Donald E. Moore
 Mark T. Watkins

Centurion

William L. Bohn
 Betsy J. Boyce
 Michael H. Clapper
 Susan Johnson Ficarro
 James F. Knopka
 Janet Kurman Hesselbarth
 Stephen E. Loveland
 Gary Mastroeni
 Willard M. Mayo
 A. Neil Newman
 Linda Anderson Robinson
 Donald A. Salvesen
 Michael D. Selender
 David L. VanTress
Pioneer
 Gordon W. Adams
 Steven R. Alm
 Charles J. Bachmann
 Henry M. Bisner
 Peter A. Bizzigotti
 Carol Lyon Bradley
 Linda Broudy
 Alan B. Cady

Alumni continued

Michael E. Corey
David J. Dimmick
James H. Driesen
Laurie H. Duncan
Richard S. Feldman
Marilyn Flagg
Michael P. Fullam
Bruce A. Gilman
Carol Ann Glenister
David Hackworth
Sandra J. Halbritter
Charlene M. Hamiwka
Gerald D. Hansen
Diane J. Holloran
Bruce R. Hoskins
Stephen E. Jaquith
Charles K. Johnson
Douglas C. Jones
Martins A. Kalnins
Mark W. Keister
Charles J. Klein
Theresa Ann Knapp
Warren Knapp
Theodore E. Lauve
Gregory N. Leach
Bruce Loverock
Linda M. Michels
Kurt Moberg
Mark I. Movitz
Christopher J. Papsian
Charles K. Porter
Roger A. Post
Alan M. Rhodes
David E. Riehlman
Thomas W. Savage
Paul L. Schwartz
Kenneth W. Schwenke
David C. Spanganberg
Dana Sparhawk
Thomas E. Stewart
Robert A. Turton
Gregory J. Westfall
Thomas F. Whitmore
David H. Yerton

1977

President's Club

James P. McKenna

Pacesetter

Dennis P. Flanagan

Centurion

David J. Allen
Catherine Rigge
Baranello
Lewis R. Becker
Richard H.
Chamberlain
Stephen J. Danko
Linda Waful Froelich
Alma I. Hix
Craig E. Hohm
Brian L. Houseal
Steven F. Jaffe
Joyce Kelly-Reif
Jeffrey S. Knouse

James E. Kundell
Robert M. Nuzzo
Herbert A. Pirson
Frederick S. Potter
Scott T. Saroff
Susan L. Scharoun
Dennis P. Segatti
Russell F. Seus
Allen T. Stehle
Richard H. Tillman
Glenn A. Turner
Donald J. Turton
Marcus F. Van Eck
Pioneer
Ronald G. Abraham
Kevin P. Ameen
William J. Balestra
Timothy L. Barnard
Theodore H. Barnes
Alan J. Bauch
Paul L. Belanger
John W. Bovet
Robert L. Bridge
Kenneth P. Brown
William H.
Chamberlain

David M. Champagne
Thomas F. Collins
Philip R. Compte
Daniel H. Craig
Roderick W. Douglass
Michael J. Ethier
Joseph L. Flack
Thomas L. Foster
Gerald E. Franz
Gene A. Goundrey
Martin W. Haerter
Harold C. Heintz
Anne Henderson
Scott E. Horgen
Melvin Thomas
Hotaling
Daryl R. Hunt
Richard A. Kaiser
Barry A. Katz
Charles P. Keutmann
Gerald Joseph Kinn
Karen J. Kirkman
Kevin K. Kyhos
Robert G. Lacolla
Jeffrey R. Lyon
Kim Lloyd Mann
April Knapp Maron
Paul J. Martin
Patricia Gomez Martz
Linda S. Matteson
Frederick D.
McCandless
G. Michael McPeck
Douglas E. Meisner
David K. Meixell
David W. Mollineaux
Daniel Molloy
Edward G. Morris
Thomas R. Morrow

William F. Morse
Nancy A. Mulligan
Robert J. Murray
David W. Norton
Glenn K. Olsen
Craig W. Ostheim
John W. Ozard
David P. Paradowski
Francis J. Phelan
Robert G. Popp
Douglas B. Porter
Paula Rak
David R. Rogemoser
Susan M. Rogers
Mark D. Rosenthal
Paul F. Ruffini
Robert A. Schiller
Daniel M. Sherman
Ronald B. Skinner
Susan Snow
Patrick J. Stokes
James E. Sutherland
Jeffrey H. Ten Eyck
Edwin W. Thorne
Philip W. Tierney
Brian R. Todd
Marian D. Tompkins
Jack R. Urban
Robert Van Steen
Thomas M.
Ventiquattro
Joan Miller Vertigan
Paul J. Wenner
Harry J. Wilber
Joseph A. Witkowski
Peter F. Woodward
Nicholas Yuschak
Marc A. Zepetello

1978

Founder's Club

Scott E. Kasprovicz
Richard J. Watro

Leader

Jan J. Smith
Kenneth J. Tiss
Ellen B. Warner
Pacesetter
Diane M. Dale
Michael K. Gooden
Otto Forster Guenther
Maren C. King
Kevin A. Lane
Joseph Thomas Mauro
Wayne B. Williams

Centurion

Kraig Martin Brigham
Dennis E. Bryers
Frederick C. Gliesing
John W. Goodfellow
William R.
Grundmann
Richard William Hansen
Robert W. Hargrove
Kevin G. Nuffer

Pamela A. Petko-Seus
James M. Pike
James Kilbane Sutter
Glenn T. Ticehurst
Terence J. Tipple
Tonda Thering West
Michael S. Winnicki
Pioneer
Randolph Steven Baker
James R. Betar
Christopher P. Blank
William L. Bradford
Jean M. Brown
Gail Grace Calcagnino
James O. Calderwood
Paul Castelli
Margaret A. De Cesare
Kevin F. Delaughter
David V. Dobreski
Joseph F. Dockwiller
Margaret Apellani
Downing
Clare L. Driscoll
David Thomas
Ercolano

Therese Girdis Eskew
Keith E. Fadel
Jean A. Fallowfield
Peter R. Fernandez
Richard Dana
Fitzgerald
Joseph F. Fontanella
William E. Foxenberg
Nora Moran Gallagher
John C. Gamble
Michael Robert
Grumm
Paul D. Hamann
Josef E. Hansen
Francis M. Heffernan
Philip J. Hertzog
Victoria A. Hibbard
Benjamin F. Hobbs
Karst R. Hoogboom
Anne M. Johnson
Thomas J. Kalinosky
Joseph W. Kearney
Stephen M. Kinne
Peter Edward Knauf
Janice LaChausse
Jerome W. Landi
Andrew D. Leonard
Sue Woods Lewis
Walter W. Linck
Michael M. Lutjen
Charles F. Mackaravitz
Bernard F. Maloy
David M. Mathien
James M. McIlvain
Yousuf A. Mehter
Andrew W. Molodetz
Paul V. Palmiotto
Joan M. Paprocki
D. Andrew Pitz
Reggie D. Purington

Jeffrey E. Raynsford
William R. Reynolds
Dennis G. Rice
Henry J. Roth
Donald R. Ruch
Linda S. Russon
Richard F. Scibior
Anne Marie P. Sebesta
Timothy P. Seeling
Thomas D. Shearer
Thomas R. Sheil
Michael Walter
Sherman
Donald M. Simons
Laurie Sutherland–
Nehring
Tracey Reed Szajgin
Marcy A. Waldauer
John Thomas
Walkowiak
Jeffrey H. Waugh
Celeste Welty
Wynn E. Wittthans
Mark A. Zawada

1979

Founder's Club

Jesse M. Fink
Elizabeth C.
Mitchell Fink

Leader

Mark Bronon Bahosh
Todd K. Parmington

Pacesetter

William R. Eggers

Centurion

Stuart D. Appel
Dana A. Batley
Matthew J. Callahan
Gary Louis Cianfichi
Robert W. Clement
Margaret E. Coleman
Kenneth E. Coombs
John Stephen Duff
Dawn S. Foster
Pamela L. Golde
Maryann Kaczmarek
John Gridley King
Ronald P. Kuracina
Teresa Jo Laundon
Robert Maimone
Thomas D. Martin
Paul W. Maue
Fred Munk
M. Keith Redenbaugh
Ronald C. Tetelman
Martin W. Wallace
Roberta Needham
Woodburn

Pioneer

James E. Bansbach
Jeffrey L. Bernard
Elizabeth
Fluckiger Bibla
Margaret Pergrin Bohn

Michael P. Bontje
Andrew S. Bronseke
Peggy A. Brown
Kevin B. Cavaoli
Karen D. Coffey
Michael A. Corsello
Samuel P. Crane
Gregory S. Davis
William H. Edmister
Julie Irene Eldridge
Susan K. Evans
Donald Joseph
Finnegan
Thomas Richard Folts
Edward J. Frankoski
Mark E. Furuya
Gary W. Gilpin
Gary R. Goff
Daniel C. Gray
Ellen A. Grunsell
Raymond W. Hahne
David S. Hamling
Daniel J. Hansen
Constance Turner
Haydock

Gary R. Hilderbrand
John Francis Hilley
Lissa Howe
Peter C. Innes
Peter F. Jackson
Susan D. Kaplan
Mary O'Leary Kiernan
Katherine B. Killoran
Mary Wright Lomolino
James Thomas Losee
Christopher J. Luley
Thomas A. Maleike
Andrea G. Martin
William Burton Moore
Karen L. Moran
Adrienne M. O'Brien
Cheryl A. Palladino
Celia M. Petersen
Donald F. Potts
Daniel Ford Reynolds
Robert Rieger
John P. Robilotti
Robert R. Rooney
Pamela J. Sevy
Katherine Demick Sise
Edward Neal Snook
Richard A. Southwick
Robert A. Stovall
Karen Greene Swensen
Patricia G. Thorne
Matthew G. Titus
Cornelius J. Vandyke
Deborah L. Weresnick
Robert H. Zimmerman

1980

President's Club

Janet Webster
Jackowski

Alumni continued

- Leader**
 Christine R. Capella-Peters
 Timothy Nelson Delorm
- Pacesetter**
 Joseph C. Okoniewski
 Corwin Joseph Poy
 Margaret L. Shavaliar
 John Thomas Shields
 Christopher L. Simard
- Centurion**
 Horace P. Aikman
 Stephen William Anagnost
 Kristin Marie Andres
 Marc Douglas Ankerud
 Lynn Erla Beegle
 Charles E. Coonley
 Carolyn Flynn
 Tara M. Goldberg
 Jerome Paul Josselyn
 Paul Alan Krupa
 Regina Watson Loewenstein
 Elizabeth Lonoff
 Kathleen H. Paul
 Keith A. Poerschke
 Margaret G. Redinbaugh
 John R. Roman
 Robert S. Stegemann
- Pioneer**
 Stephen J. Aiken
 Ellen R. Barrett
 William A. Berliner
 Darrell R. Bird
 Daniel L. Bishop
 Debra Fosberg Bourgon
 Eva Farkas Briggs
 John James Broadbin
 Rosemary A. Burris
 Clarissa A. Caccavano
 Robert John Canora
 Gary Michael Capella
 Paul C. Capone
 Robert G. Chamberlain
 Robert Lewis Conner
 James L. Contino
 Clifford Devall Davis
 Rick Allan Denison
 Carol Lynn Disalvo
 Timothy S. Eckert
 Peter Burke Elder
 Mary Ellen Fish
 Jay Corydon Frantz
 Monica E. Freson
 James R. Fries
 Michael A. Furness
 Judith Ann Ghosin
 Dee A. Gillespie
 Mark A. Grevas
- Ronald John Guglielmo
 Michael Emery Hanscom
 Gerald T. Harrington
 John P. Hayden
 John Edward Heiman
 Daniel J. Heneka
 Barbara Ann Hoefs
 Craig B. Hynes
 Matthew William Jacobs
 Julie Sherman
 Jakubovitz
 David Louis Jureller
 John P. Kane
 John Joseph Kelly
 Matthew J. Kelty
 Michael Anthony Kennedy
 Susan M. Krotz
 Frank David Lehman
 Carl Edward Mach
 Craig Andrew MacKnight
 Kenneth R. Markert
 Irene Marx Olson
 Keith Richard Maurice
 Timothy Maurice McFarland
 Edward Francis McTiernan
 Raymond John Nolan
 Jeanette Marie Norton
 Eric D. Paulson
 Dana J. Piwinski
 Robert J. Rabaglia
 Mark Edward Ramos
 James C. Richburg
 Alan A. Rock-Blake
 Debra Hamer Rogers
 Gail Margaret Romano
 Thomas Craig Saffel
 Joseph R. Scudlark
 Lorraine Eva Snyder
 Robert Lee Spencer
 Michael Elliot Spitzer
 Michael Joel Stein
 Mark Charles Stolzenburg
 Nan Chadwick
 Stolzenburg
 Joseph R. Taormina
 Arthur N. Teamerson
 Gail M. Terzi
 Mark G. Thompson
 Theresa Triandafillou
 Joanna Jane Walsh
 Patrick Thomas Whalen
 Alison F. Wood
 Bryan C. Wood Thomas
 Roy Peter Zahnleuter
 Andrew Roy Zahora
- 1981**
President's Club
 Louis Charles Fusco
 Jeffrey J. Morrell
- Pacesetter**
 Charles Francis Godbout
 John R. Merten
 Timothy D. Spry
- Centurion**
 John P. Ashworth
 Joan M. Brennan
 Brian Richard Butterworth
 Jerry Collins
 Ellen Anne Cypher
 Robert Danoff
 Daniel T. Fitts
 Patricia Ann Fritz
 Peter S. Given
 Barry J. Greenberg
 John Steven Haederle
 W. Elliott Horner
 Steven W. Katz
 Manfred Owe
 Kamala G. Rajan
 Richard Jay Riesdorff
 Charles P. Rosemarino
 Josephine A. Scalia
- Pioneer**
 Craig M. Allen
 Bruce Walter Ball
 Jeffrey Walter Beeman
 Donald John Belger
 Jack Berte
 David Michael Brooks
 Susan G. Browne
 Michael James Cambridge
 Lisa Marie Cannellos-Weber
 Lee Gradischer
 Carbonneau
 Kenneth Dowd Carlson
 Charles John Carter
 Brian David Chipman
 Ralph Herman Combe
 Charles Douglas Cranston
 Philip Destefano
 Karl W. Doerner
 Steven M. Faigen
 Kristine Fabblioli Fay
 William M. Ferretti
 Michael S. Fisher
 James C. Flint
 Matthew J. Forcucci
 Margaret A. Fusco
 Frank P. Gagliardo
 Guy S. Gardner
 Miles Garfinkel
 William H. Green
 Michael Grizenko
 Martin R. Hartmann
- Thomas P. Harvey
 Michael J. Heller
 Stephen F. Hoffmann
 Lawrence W. Holmberg
 Tim H. Hsu
 Sheng Hsin Hu
 Roy F. Huchzermeier
 Charles William Jackowski
 Hal G. Johnson
 Robert William Judge
 Ralph Thomas Keating
 Lawrence Michael Kroon
 Robert A. Lambe
 Edward J. Leblanc
 Nancy Anne Lenz
 Susan Dinero Lockwood
 Alton Perry MacDonald
 Joseph J. Martens
 Brian L. McIntyre
 Stephen James Miller
 Jane Elizabeth Mudano
 Melissa Ann Myers
 William R. Naumann
 Julie Ann Nelson
 Joan B. Nichols
 Charles V. Nilsson
 Harold Edward Oot
 Liz O'Rourke
 Susan M. Perkins
 R. Douglas Petrie
 Thomas W. Phillips
 Harriet Plumley Plumley
 Marian C. Poczobutt
 Thomas Edward Price
 Brian David Riley
 Kelly Smith Rohrer
 Marsha Cohen Rolnik
 Donna Elizabeth Roth
 Diane L. Schrader-Goetke
 Rory Shea
 Alice M. Sikorski
 Clifford Peter Smalley
 Robert L. Stolz
 Joseph J. Tozzi
 Timothy Martin Wallmeyer
 Michael T. Walsh
 Henry Booth Wightman
 Michael J. Wilke
 Scott A. Willis
 Gregory Mills Wilson
 Bonnie S. Young
- Keith Terry Morris
 Robert James Preece
 Susan N. Westbrook
 Scott J. Wheeler
- Centurion**
 Susan E. Anagnost
 Eric N. Anderson
 Susan F. Arling
 Jeffrey Paul Carroza
 Mary W. Clements
 Daniel Cornell
 Susan M. Cox
 Robert Edward Deforest
 Russell George Dushin
 Robert Urban Fischer
 Angela T. Flynn
 Arthur M. Johnsen
 Kurt M. Lannon
 Alan David Lovejoy
 Howard L. Maurer
 Theresa M. Mercier
 William Richard Osborne
 Richard P. Pauli
 Peter John Sinclair
 Randall Stewart Slade
 Ruth M. Sundstrom
 Thomas M. Toal
 Cynthia Marie Wood
- Pioneer**
 Judy A. Arvan
 Barry S. Baldigo
 Jeri Dominic Barrett
 John K. Bartow
 Thomas Richard Bellinger
 Frank Gerard Benenati
 Thomas Bocchino
 Cheryl Rawls Brooking
 Gregg Edward Brown
 Wayne Arthur Burmaster
 David Bruce Carson
 Donald C. Castor
 Stephen Charles Catherman
 Sung Chin
 Craig W. Coffed
 Nancy V. Cook
 Dawn Radley Dana
 Peter Michael Debeauchamp
 David Mark Delozier
 Patrick John Eves
 Jeffrey Alan Ferguson
 Steven Finkelstein
 Mark Flory
 Nancy Pauline Fogarty
 Suzanne Gaynor
 Charles Gowan
 Michael Benedict Gracz
 Peter Bennett Gradoni
- Alan J. Grant
 Philip John Halsch
 Laurie J. Harter
 Scott J. Heim
 Richard Frederick Helm
 Robin E. Hoffman
 Charles D. Hyams
 C. Michael Ingersoll
 Eric Campbell Jespersen
 Mark Robert Johns
 Emily Zebisch Johnson
 William Anthony Johnson
 Christine Kane
 Henry Bassett Keller
 Michael Lee Kieff
 Paul J. Knopp
 Mark Joseph Kopchak
 Timothy Alan Kruppenbacher
 John E. Laubscher
 Martha K. Loeffler
 William Edward Lupo
 James R. Mallette
 Paul W. McCoy
 Jeffrey John McDonald
 S. Grant McGlynn
 Jane H. McIlvain
 Carl D. Monte
 Gregory Owens
 John Michael Powers
 Karen Elizabeth Rasmussen
 John James Reed
 Karl Martin Richard
 Peter Ritchings
 Elizabeth Riehl Ritz
 Glen William Roberts
 Daniel J. Robison
 Mark Dennis Rogers
 Jane O. Rowan
 Abby R. Rudin
 John Todd Sarraf
 Horace B. Shaw
 Daniel M. Spada
 Kelly Wallace Stang
 Peter J. Stanistreet
 Kenneth Jay Stein
 James F. Stevens
 Joseph Strada
 Mark Stephen Ward
 Stephen Tim Webber
 Julia E. West
 Diane M. Wheelock
 Gary Daniel Wilson
 Timothy Albert Wimmer
- 1983**
Pacesetter
 Scott W. Blakely
 Mark B. David
 Chad P. Dawson

Alumni continued

John Arthur Gibbs
Peter Michael Schiess
Centurion
David Redfield Blye
Lois A. Eckstrom
Peter Hobart Jipp
Alfred F. Miesemer
Laurence Eric Miner
Chester Jiro Onuma
Anne Papageorge
Charles Edward Parkes
Donna J. Plunkett
Joseph Anthony Scarsella
Stephen Tim Schantz
Julia A. Schiavi
James Maurice Sheibley
Pioneer
Iver M. Anderson
John I. Anderson
Mary T. Binder
Anthony L. Bonagura
Stephen David Bystran
Paula Anne Caron
Frances Antonia Chester
James Robert Clark
Joanne Orman Dickens
Daniel Joseph Empie
Ken James Field
Katharine M. Follot-Layton
Richard William Fregoe
Donald James Friedler
Eileen O'Brien Gibbons
Tara Skye Goldin
Christopher Michael Grady
William E. Hamilton
Kathryn Strickland Hanson
Jeffrey L. Herter
Franklin John Hoerner
Dawn E. Holzer
David John Jacobs
Kathleen Ann Kelly
William George Kent
Jack H. Kessler
Cara Louise Kirkby
Susan A. Koperczak
Robin Viola Kruse
Mark Andrew Kurtis
Daniel Francis Landers
Willie J. Lau
Scott Alan Levy
Glenn H. Lindsley
Thomas Grant MacMackin
Ellen Rom Manno
Stephanie A. Masaryk-Morris

Vicki L. Maynard
John Edgar McIntosh
William E. Meehan
Thomas Flynn Murray
Kenneth James Nersesian
Karen Poms O'Connor
Debra Vaine Oglesby
James M. Page
Gregg Alan Rabasco
Linda Sica Rehm
David Howard Rockwood
Mary Jo Schilling Rooks
Ronald C. Rote
Susan Rutman
Gary Steven Sanderson
John Robert Stapleton
Theresa Louise Stoia
Susan L. Stout
Joann Becker Szczech
William Lyle Teamerson
Richard M. Teck
Mark Christopher Terenzi
Teresa Rene Tyoe
Deborah M. White
John S. Wood
1984
Founder's Club
Chin S. Yang
President's Club
James William Jackowski
Leader
Kenneth B. Adams
Pacesetter
Debra Segal-Brackman
Robert E. Unsworth
Centurion
Barbara B. Beall
David M. Dardaris
David Dale Dreisbach
Nancy J. Ferlow
Brian Thomas Fitzgerald
Tracy A. Gingrich
Kimberly B. Gotwals
Jay A. Janson
Lynda P. Silkey
Carmen Dean Spara
Michael C. Squires
Holly V. Williams
Pioneer
Laurie Anne Bailey
Paul Michael Bensadoun
Robert John Brennen
Robert B. Buerger
Frank Joseph Calovini

John Kenneth Campbell
Virginia Simonsen Carlton
Timothy J. Carroll
Jocelyn A. Cole-Calkins
Jeffrey Scott Cortese
Cheryl M. Craft
Jenny Sue Crisman
Brian D. Dansin
Carrie Blevins Donohue
Steven George Eberl
Thomas Charles Fairservis
George B. Flynn
James Michael Fogg
Diane Friedman
Christopher Frielinghaus
John Calvin Graham
Robert Stanley Green
John Peter Jastrzembski
Lucinda B. Johnson
Mark Anthony Johnson
Eric J. Jokela
Marcia Elaine Joseph
Eric John Lauber
Susan M. Leven
Ann Lewis
Sheila M. MacDuff
Ralph Joseph Mancini
William P. Mason
Andrea M. Maxson
Susan Mitchell
Kenneth Alan Mix
Maria C. Moreland
William J. Morrow
Joshua Kenneth Nixon
Eileen O'Donnell
Peter Andrew Palmiotto
Lewis H. Payne
Patrice O. Perry
Doreen Peters
Michael Edward Pollard
Daniel Robert Ramer
Richard Ranieri
Gail Peterson Sack
Robert M. Sanford
Michael J. Scarzello
Brian K. Schermerhorn
Lisa Arbucci Schmid
Stephen H. Scott
Maureen Danielle Silfer
James Eugene Skorulski
Kenneth Soeder
Daniel G. Thomas
Karl P. Van Gorp
Michael Jeffrey Viscardi

1985
President's Club
Lowell W. McBurney
Leader
Eric M. van Rooy
Brian Wester
Pacesetter
Beth L. LeClair
Centurion
Joanne B. Arany
David G. Bauer
Robert Joseph Campany
Kris Dimmick
Mark Charles Fletcher
Ronald S. Headrick
Yvonne C. Manfra
Kevin Gerard Mangan
Clay V. Morrissey
Carol S. Roberts
Bruce Steven Tangarone
Mark S. Weinman
Robert J. Weireter
Steven J. Wisniewski
Pioneer
Thomas Martin Agnew
Elaine (Williams) Alexander
Joseph Thomas Appleby
Jeffrey R. Auer
Andrew P. Bader
Thomas Rogers Ball
Clifford K. Bell
Glenn Todd Bingham
Peter M. Burke
Lorraine Carter
Craig Stephen Church
Constance L. Coggins
David Andrew Conn
Chris D. Demme
Robert S. Dickie
David B. Elmer
Suzanne A. Elmer
Holly Frey
David John Gitto
Brad T. Gydesen
Michael Lynn Hall
Thomas Knight Haner
John Thomas Hennessey
Mary H. Henry
Reba S. Herndon
Brian T. Hoffmann
Jeffrey Andrew Kane
Patrick William Keenan
Joseph P. Kelly
Candida A. League
Dave C. Leblanc
Stephen J. MacAvery
Margaret Z. Mason
Ann Elizabeth Mates
Thomas Martin Maurer
Stephen E. Meehan

Linda Marie Morehouse-Albanese
Nelson C. Mount
C. David Niles
Thomas P. Nitido
Christopher A. Nowak
David J. Nowak
Kevin M. O'Rourke
Linda K. Parrish
Renee A. Parsons
Christine Price Pechner
Andrew Peter Pittner
Michael Robert Ragan
Frances S. Raleigh
Mark W. Reynolds
Lyne M. Roglieri
Keith A. Russo
John Michael Scanlon
Thomas Matthew Schmidt
Robert James Schug
Wendy K. Sherman
Thomas Robert Shone
Timothy J. Smedes
Kevin Andrew Tone
Thomas J. Van Desande
Harry Thomas Ward
Laura Jane Wesson
James H. Williams
Michael J. Wimsatt
Timothy N. Wood
Edwin Earl Woods
1986
Pacesetter
Arthur G. Dillon
Cheryl S. Doble
David O'Donnell
Centurion
Chinmay S. Betrabet
Daniel W. Clayton
Charlotte L. Demers
Mario A. Fischetti
David Mitchell Hunter
Steven F. Lachacz
Marquess E. Lewis
Robert D. Rhoads
James M. Savage
Debora Bailin Schwartz
Pioneer
Milton Burry Adams
Harry Franklin Bailey
Sharon J. Baker
Vance A. Barr
Neal F. Buelow
Thomas R. Byrnes
Terrence Edward Croad
Timothy P. Cullinan
Stacey Louise Dodd
John David Elko
Blake Weatherby Fulton
Kenneth Michael Gignac
Donna L. Glapinski
James A. Grob

Donald R. Gustavson
James D. Haley
Scott Raymond Hall
Gretchen Heine Hesler
Dwayne Elias Hess
Karen Rothhaas Hurd
Robert H. Jones
John William Kern
John C. Lachance
James M. Ligon
Robert W. Malmsheimer
Thomas J. Martin
Julie Ann McGaulley
James Lewis McPherson
Frederick C. Monaco
Michael Paul Ohl
Duane Roger Palmateer
Mark C. Parrish
Patricia Marie Pastella
Brian D. Peck
Stephen Wacla Radzysinski
Timothy J. Raichel
Daniel Aaron Reeder
Catherine Rossi Reynolds
Wendi M. Richards
Marc L. Rosoff
Jay M. Rubinoff
Joan Ellen Savage
Kit Schwendler
Robert C. Somers
Karen M. Sprague
David Stanley Stankes
Michael S. Stooegenke
Clark L. Swinehart
Zwelonke Ian Ushe
Brian Paul Wagner
Kevin M. Walsh
Michael D. Wells
Sandra G. Wheeler-Arey
Christopher J. Williams
Jennifer A. Williams
Elaine Patricia Winslow
Dennis M. Wnorowski
Fuushern Wuu
1987
Pacesetter
Robert E. Deyle
Karen Judith Maher
Centurion
Steven Scott Burd
Pioneer
Vicki Hurst Allen
Lee R. Bresmon
Marla E. Briggs
Kenneth Michael Chaisson
Vincent J. Cotrone
Thomas M. Gorman
Jean M. Gruhn
James Glenn Hirsch
Steven A. Israel

Alumni continued

Caroline M. Kiss
Barbara Anne Lancour
Ron Leonard
Thomas John Markley
Garrett James Moll
Jeffrey L. Nugent
Scott Edward Palmer
Douglas R. Pearsall
Dawn Ellen Peters
Rosetta Reid Railey
Karin E. Readel
Janet C. Rith-Najarian
Elizabeth S. Rogan
Thomas W. Rothwell
Anne B. Saltman
Michael Anthony Santucci
Robert W. Scammell
Gail P. Senesac
Joel M. Stopha
Amelia Zamoiski Swiernik
William M. Swiernik
Ann M. Tarbet
Joan Marie Tiner
Michael A. Tragner
Susan Collamer Van Patten
Lisa Norton Welch

1988

President's Club

John A. Harris

Pacesetter

Robert E. Parker

Centurion

Barbara J. Buchanan
Lance D. Drummond
Meg Filmer
Richard Wayne McCormick
Marcia J. Tobin

Pioneer

Michael S. Ajemian
Jeffery Leon Austin
Steven E. Barry
Keith Raymond Beaver
Matt M. Beirne
Steven Bick
Lawrence E. Bifaro
John M. Brannock
Carl F. Brown
Linda M. Burke
Dannielle Carr
David W. Carr
Jacqueline Irene Casciani
Susan M. Coleman
Caryn Ann Crook
Peter Kevin Cullinan
Brian Joseph Dangler
Bettina De Scisciolo
Edward Robert DeSocio
Joseph E. Doucette
Ralph B. Downard

David A. Drake
Randy Jay Ellithorpe
Haley Michelle Ferraro
David R. Gerber
Rebecca Ann Gleim
Kristina Casscles Godwin
Thomas M. Graber
Paul J. Hess
Leeann Karen Huey
Edward G. Keplinger
John M. Keyes
Sandra Anne Kilroy
Mark C. Kozsan
Jeffery S. Locke
David Henry Lombardi
Joseph M. Lukasik
Kathryn Kelly Macri
Gerard M. Marzec
James William Matzat
Scott G. Miller
John F. Mueller
Ronald Edward Pfuhl
Ellen A. Poole-Lewis
Kenneth J. Popino
James A. Reppert
Todd D. Rothermel
Paul Richard Ruschmeyer
Paul W. Stevenson
John Strepelis
Ellyn K. Tighe
Cory D. Wheeler
Donna M. Williams
Jeffrey Richard Wood
Stephen P. Wood

1989

Pacesetter

Peter R. Abitz
Robin A. Summerhill

Centurion

Peter Xavier Boullianne
Jonathan G. Kennen
Andrew R. Major
Peter Francis Tantalo
Eric William Webster

Pioneer

Todd J. Blanc
Ronald B. Bliston
James Richard Boylan
Jackie Tricia Broder
Rita W. Cook
Deann Lynn Cummings
Blaise A. Darveaux
John Francis Debboli
Yadollah Delaviz
Shawn A. Dent
Steven M. Eckler
Jeffrey Robert Felker
Dale L. Garner
Stephen David Gettle
Anthony Guccione
William A. Janowsky

Kenneth Raymond Jones
Karen Anita Kanyok
Betsy Anne Keplinger
Christine M. Kinn
Jon Edward Kleist
Alix V. Krueger
William P. Manion
Tanya Dawn McIntire
Brooks Mountcastle
Kurt Llewellyn Mueller
Annette Marie Popino
James Francis Reese
Gerald Edward Rightmyer
Roger Scott Rommel
Glenn Sandiford
Barbara A. Senecal
Brent James Speicher
Eric Andrew Valckenaere
John P. Valovic
Gerald J. Webb
Robert R. Weller
Thomas William Woods

1990

Pacesetter

Daniel J. Roock

Centurion

Todd William Anthony
Clyde H. Burnsworth
Daniel M. Zajac

Pioneer

Brian John Almeter
James B. Alpin
Kris E. Anderson
Kenneth Scott Baginski
Anthony R. Brach
Lisa C. Buckshaw
Deborah J. Cappuccitti
Philip E. Dahlin
Scott W. Davis
Elisabetta Theresa DeGironimo
James P. DiBattista
Christopher Ross Fiedler
Christina P. Fox
Christopher Hugh Fritz
James Scott Ganter
Daniel J. Gefell
Scott B. Goldie
Richard E. Harrington
Nagaraja R. Harshadeep
Andrew W. Hartman
David A. Hawke
Gene Ben Herskovics
Lisbeth House
James M. Kubiak
Tracy L. Lawrence
Jason Paul Marshall
Timothy P. McArdell
James R. McCarthy

Sean E. McGlynn
Matt N. McGowan
Russell C. McKittrick
David Mathew Miller
Peter D. Nicholas
Daniel Joseph Nicholson
Timothy F. O'Brien
Sandra Palmer
James H. Porter
Michael P. Radner
Mary E. Raman
Janine M. Saatman
Eugene John Schwarzrock
Cynthia J. Smith
Ann Garrison Thibault
Barbara Teetsel Webb
Todd C. Wills

1991

Centurion

Glynnis N. Collins
Joshua J. Millsbaugh
Joseph D. Nolan
Alan D. Rice
Xiangdong Shi
David Nichols Suarez

Pioneer

Ronald T. Aiello
Matthew G. Barbalich
G. Andrew Bartholomay
Janna Beckerman
Frederic Besch
Laura Ann Carey
Daniel E. Collins
Christopher G. Crawford
James C. Danner
Matthew Delaney
Margaret L. Engasser
Richard William Evans
John M. Farrell
Robert Patrick Farrell
Christopher A. Franzen
Andrew Peter Geremski
Shawn M. Hubbard
Todd M. Hurd
Horst Alexander Koslowsky
Linda A. Lubey
Brian W. Marek
Edward J. Marsh
Stan C. Milos
Barbara Anne Nickels
David P. Oldow
Renee L. Robichaud
Thomas R. Smullens
Steven C. Stedman
Rachel M. Woodworth
Michele R. Wrzochalski

1992

Leader

Jeffrey M. Speich

Pacesetter

Sandra E. Bonanno

David L. Datush
Gloria Stone Plottel
Centurion
Inga N. Barry
Cecily M. Costello
Jay Paul Goldacker
John James La Gorga
Marc J. Morfei
Terry Alton Mundy
Laurence Joseph Rys
Michele M. Shore
Stephen Paul Tyksinski
Guangbin Zhou

Pioneer

Eric L. Ames
Richard W. Anderson
Peter V. Auyer
Brett J. Chedzoy
Robert Michael Cherevko
Leslie A. Clachrie
James Patrick Colon
Michael John Desautels
James Daniel Douglass
Curtis Alf Ecklund
Carolyn B. Gaul
John T. Hassett
Steven P. Holbrook
Thomas W. Karig
Jon David Miller
Weining Ye Morrisroe
Britt Morecraft Norris
Dennis John O'Hagan
Eric J. Parisi
Mark Edward Penhollow
David Michael Poppe
Timothy H. Ramsey
Amy E. Rothe
Joseph R. Ryan
Barbara R. Schiff
Jeffrey H. Schwartz
Lewis J. Staats
Linda Ruth Stancliffe
Jennifer M. Stanhope
Jeffrey W. Tanner
Steven M. Taylor
Michele Terando
Rodney Lee Wojtanik

1993

Centurion

Jocelyn L. Aycrigg
Michael Robert Emery
Robin Louise Pietropaolo
Thomas R. Snow
Joanne Rosilyn White

Pioneer

Eric Donald Ackerman
Randy G. Adkins
Kurt E. Borchardt
T. Patrick Burke
Steve K. Chlus
Christopher T. Crossman

Dawn Michelle Cullen
Steven M. Dalton
Kristopher Karl Detlefsen
Brian Peter Duffy
Donald John Ellington
Linda A. Fagan
Christopher H. Gardner
Rebecca M. Gerardi
Douglas J. Grady
Melissa N. Hauck-Baker
Robert S. Henry
Tara Ann Jones
Scott D. Klopfer
Randall D. Klossner
Michael Anthony Lumbis
Ajay S. Maheshwari
Gregory McGee
Daniel W. Mencucci
Jennifer Zelenek Merrill
Paul M. Moore
Amy L. Mustian
Nanette S. R. Nelson
David Edward Oleyourryk
Theodore David Otteni
James Anthony Palumbo
Ronald Robert Pernisi
Kelly Ann Porter
Michele M. Reed
Michael N. Reynolds
Heidi Rieckermann
Steven Roberts
Mark R. Scallion
Jodi Hayman Schaefer
James E. Sessions
Timothy Severance
Kelly A. Smallidge
Brian C. Smith
David James Snyder
Travis Peter Stanek
Kal Szigeti
Sean Michael Tyler
Michael Jay Walter
Aaron Lee White
John J. White
John Bernard Zemanick

1994

Pacesetter

Suge Luo

Centurion

Maxine Dakins
Rodney Christoph Ives

Pioneer

Marisa Alberti
James Burrows Avallone
Sean Michael Brogan
Sharon Lee Brooks
Bernard R. Buff
Charles A. Buxbaum

Alumni continued

Christopher M. Calamita
Laurie A. Dashley
Stefan George Dirghalli
Jennifer Fencil
Paul Joseph Gryga
David C. Hawkins
Gary H. Henry
A. Landis Hudson
Kevin P. Hynes
Timothy F. Jachlewski
Laurie A. Kobor
Michelle Lynn Lapo
Mengkui Luo
Matthew Carl Mann
Cheryl Lynn Moore
Elizabeth Myers
Marcy A. Neville
Kenneth Scott Patterson
Scott John Perretta
Christopher Jon Perry
Christine Marie Peterson
Leah E. Poulin
Katherine Terry Radomski
Steven L. Ragonese
Karen E. Rapelje
Steven J. Rolfe
Richard T. Sbuttoni
Edward Jonathan Schmidt
Jonathan Glen Shoulta
David L. Sturges
Jeanine M. Thompson
Deborah Ann Thuman
Howard Weinberg
Scott Patrick Wilkins
Rory Abbott
Woodmansee

1995

Centurion

Myrna H. Hall
Brenda Kae Martin
Sarah S. McCrary
Zizhuo Xing
Keegan Yi-Soong Yang
Pioneer
Shad Edward Alsworth
Bryan Thomas Balk
Colin Matthew Burgess
Sandra E. Burns
Christian Michael Castiglione
Jason James Cooper
Kathryn Heather Elble
Jennifer H. Fewster
Nicole Renee Gates
Thomas Dennis Gibbons
James Michael Grabowski
Charles Nolin Greene
Dale Edmund Haas
Brian W. Hayduk

Daniel James Hockenberger
Jose Iribarne
Elizabeth Joerger
Mary Ann Karp
Brendan Thomas Kelly
Kenneth M. Livingston
Dennis Joseph Madge
John Patrick Morgan
Jan A. North
Jennifer Lynne Pennington
Gabriel Paul Roussere
Richard Scott
Eric James Shaw
Mark Skojec
Todd Howard Waldron

1996

Centurion

Elizabeth Anne Allyn
Raymond H. Apy
Amy George Dickstein
Matthew John Karp
D. Steven Keller
Brian Christopher Lembke
Douglas Alan Little
Thomas Louis Mereand
Jonathan Charles Pawlak

Pioneer

Christopher Asaro
Michael Edward Askin
Gabriela Canamar
Jennifer Marie Ciminelli
Casey William Cowan
Jeffrey William Davis
Kevin Vincent Donohue
Kyle Michael Downey
N. Peter Fleszar
James Edward Gavin
Stephen R. Getchell
Tracy Ellen Hahn
Aimee K. Hanson
Sean Michael Karn
Chad Michael Kessler
Mark Robert Kosmerl
Carolyn Denise Laberge
Gretchen J. Lane
Leo R. Neville
Michael L. Pacelli
Joel Justin Pawlak
Susan R. Pfeffer
Dean Paul Pushlar
Michael J. Reed
Thomas Roach
Peter William Roeske
Lisa Roop
Peter Scott Smith
George Edward Spak
Mark David VanScoy
Jennifer Rebecca Woods

Jingmin Wu
Christine Diane Yates

1997

Centurion

Janine Renee Debolt
John Zachary Foote
Stephanie Jean Rodrigue
Heather K. Shoudy Brechko
Arthur Vernon Traver

Pioneer

George Bachand
Stacey Ann Barber
Dominick J. Celtruda
Ian Michael Crowley
Jane Marie Cummings
Gary A. Feinland
Tanya Jeanne Folger
Laura M. Forcella Spiering
William P. Fritz
Karen Marie Gaidasz
Alejandra Paz Gomez
Aaron Thomas Graves
Erin Katherine Hawkes
Leigh Gartner Jones
Kimberly A. Kendall
Nicole M. LaPlante
Keith Lewinter
Valerie A. Luzadis
Mark Alan Maloy
Jeffrey C. Mangel
Michael R. Marion
Corinne Louise McCament
Richard P. McDonald
Brian L. McGlynn
Francine Mejia
Christian James Mercurio
Amy Elizabeth Mott
Robyn Anne Niver
David Douglas Oaks
Francis Philip Pappalardo
Katherine Susan Pawlak
Kevin Michael Podkowka
Judson Powell
Gregory Paul Pulver
Sharon Senita Putney
Jonathan David Roppel
Christopher Michael Scully
Ananta S. Shrinath
Jeremy James Taylor
Scott J. Taylor
Stephen Alexander Watts
Kim Elena Wheeler
Kristi Lynn Wiedemann
Heather Anne Wierzbicki

Michael Charles Williamson
Ben Michael Zomer

1998

Pacesetter

Christopher George Craner
Centurion
Marlene Bachand
Jason Robert Matzke
David J. McMullen

Pioneer

Andrea K. Bratis
Jennifer Kathleen Bretsch
Craig Richard Brown
George Bruce Bumann
Nathan Hanley Cheal
Richard Albert Dicioccio
Justin Aurellano Dombish
Paul Edward Duncan
Daniel John Ganley
Daniel G. Gilbert
Tammy L. Hadlow
David Richard Hanny
Jill M. Havens
David John Hoffman
Michael Allen Jones
Todd L. Juhasz
Julie Ann Klocker
Matthew Adam Leidner
Andrea Mercurio
James Leo Mulherin
Pamela A. Natoli
Mitchell David Nellis
Erik Edward Nordman
Carolyn C. Pike
Lindi J. Quackenbush
Thomas Frank Rogers
Angelo Schembari
Frank Patrick Sidari
Paul G. Snider
Lawrence W. Snyder
Kathleen Ann Stephenson
Raymond Joseph Stone
Jeffrey Mark Uryniak
James C. Warren
Anne Wildman

1999

Centurion

Edward John Desocio
Dane Stefan Kwiatkowski
Pioneer
Kimberly L. Anderson
Jeremy N. Bartholomew
Kendra Jane Billings
Tammy Lynn Breski
John F. Connor
Tavia Marie Cramer

Andrew Marc DeMaio
David Craig Easton
Cary Genevieve Engle
Scott Lewis Gates
Katherine Day Hargrave
Nicholas Koch
Timm Kroeger
Heather Marie Lavarnway
Ellen Maureen Lloyd
Michael Jon Marino
Mark Mitchell McMillin
Jennifer Leigh Miller
Clifford Andrew Milow
Brian Vincent Monterosso
Eric A. Mucha
Andrew Michael Murphy
Richard P. Phillips
Michael J. Plastino
David R. Rarick
Thomas D. Schuster
Scott Michael Sincebaugh
Michael Jeffrey Smith
Pamela Marie Spaziani Helms
Jeremy Adrian Stidd
Jeffrey Jerome Sturek
John T. Tangen
Albert R. Thalen
Daniel Lewis Welsch

2000

Pacesetter

Michael Todd Dugan

Centurion

Jill Elizabeth Ferguson
Paul Bradley Hai
Eugenia Bruno Hart
James Michael Smith

Pioneer

Deborah J. Ashley
John E. Auwaerter
Brian Werner Beutel
Jillian Anne Boudreau
Kevin Devereaux Boutelle
Kristen Anne Buechi
Angela Assunta Cedrone
Bethany C. Dermody
Carrie Jo Doody
Brian Arthur Ferguson
Lynne E. Flannery
Tonia Erica Fung
Matthew Walsh Heilmann
Samuel J. Jackson
Kari L. Jermansen
Venera A. Jouraeva
Diane Helen Kiernan

Rick Daniel Kriner
Frances M. Lawlor
Jonathan Charles Logan
Paige Elizabeth Manning
Robert Charles Nichols
Shawn Francis Olenski
Jonathan Barry Peet
Kara Nadine Peet
Lisa M. Porter
Kristen Marie Preble
Anthony Robert Prestigiacomo
Joseph Aaron Reff
David Matthew Riposo
Gunther Joseph Schnorr
Justin Tyler Thaine
Scott Allen Tyler
Gareth Edwin Weaver

2001

Centurion

Peter Gerard Burke
Meghan Amelia Mary Myles

Pioneer

Matthew William Adams
Nathan N. Beedle
Roanne Elizabeth Bosch
Kimberly D. Cameron
Benjamin Issac Cook
Shannon T. K. Duerr
Nathan Scott Emmons
Sarah B. Endriss
Astrid H. Ferrer
Jonathan Leigh Foster
John Vincent Goin
Charles Paul Ippolito
Jack Michael Jakeman
Karen J. Kowalewsky
Stephen Robertson Lord

Heather Lynne Luczak
Thomas Gregory Meier
Melanie Miller
Blair D. Page
Maryann S. Page
Elise Renee Pikarsky
Rebecca Quail
Meredith Leigh Slotoroff
Daniel L. Wells
K. Kristian Whiteleather
Thad E. Yorks

2002

Pioneer

Jason Bernard Bailey
Amy L. Bashant
Stephen Blaise Blabac
Kevin P. Brazill
Michelle Lynn Casler
Brian Edward Dooley

Alumni continued

Terry A. Dundon	Benjamin Robert Tillotson	Kevin A. Douglass	Sara Elizabeth Sullivan	Hsiao-Chien Chuang	Kristen E. Peters
Jason Robert Dunlap	Horng-sheng Tu	Coraline Falco	Jeremy Mark Testa	Victoria Isabel Cooper	Troy Michael Townsend
Brice Laurance June	Jun Wang	John C. Farmer	Gi Jeung Um	William Robert Corr	Kenneth Alan Winship
Diane M. Kuehn	2003	Michael L. Farrell	Iris A. Vazquez	Heidi Louise DeFries	Kevin John Young
Timothy William Layton	<i>Pacesetter</i>	Tracy Michelle Geoghegan	Kyle Richard Weingardt	Jeffrey Robert Denkenberger	2005
Alena Leigh Marr	Daniel John Zuniga	Vincent Louis Giorgio	Elizabeth E. Wells	James Whylie Dumpert	<i>Pioneer</i>
Kyra Leigh Matala	<i>Centurion</i>	Wendy J. Jensen	2004	Angela Marie Eddy	Eric J. Greenfield
Joelle Nicole Meschino	Robert E. Mooney	Stephanie M. Kirker	<i>Centurion</i>	Laura Ann Eiselen	Jesse Allen Winks
Feng Peng	<i>Pioneer</i>	Angel Marie Knox	James Stansbury Blake	Alexander R. Gerson	
Amy Melissa Samuels	James E. Arrigoni	Daniel Joseph Kwasnowski	<i>Pioneer</i>	Kenel J. Antoine	
George Schmitt	Kristie Marie Barba	Todd Jeremy Laquay	Kenel J. Antoine	Jill Marie Bellenger	
W. Gregory Shriver	Timothy Andrew Cimbali	Amber Lynn Lenweaver	Robert Stephen Burick	Robert Stephen Burick	
David L. Szymanski	John Joseph Dempsey	Amanda A. Park	Joseph Michael Chairvolotti	Joseph Michael Chairvolotti	
Jack T. Tessier	Jerry J. DeSantis	William Glenn Shaw		Joseph Michael Chairvolotti	

Corporations and Foundations

Founder's Club

ABB, Inc.
Ahlstrom Machinery, Inc.
Albany International Corporation
Appleton Papers, Inc.
Blasland, Bouck & Lee, Inc.
Bowater, Inc.
Bristol-Myers Squibb Company
Henry H. Buckley Foundation
Buckman Laboratories, Inc.
Central National-Gottesman, Inc.
Champion International Corporation
CNY Community Foundation
Consolidated Papers Foundation, Inc.
Eastman Kodak Company
Engelhard Corporation
Garden State Paper Company
Georgia-Pacific Corporation
Gutchess Lumber Company
Harden Furniture, Inc.
Hercules, Incorporated
HSBC - North America
IMERYS
International Paper Company
James River Corporation Foundation
Key Bank of CNY/Key Corp
MeadWestvaco Corporation
Metso Paper, Inc.
Mohawk Paper Mills, Inc.
Nalco Chemical Company
National Starch & Chemical Corporation
The Newark Group
The Niagara Mohawk Foundation
O'Brien & Gere Engineers
P.H. Glatfelter Company
Silicon Graphics, Inc.
Solvay Paperboard
Southern Container Corporation
Specialty Minerals
L&JG Stickley, Inc.
Edna Bailey Sussman Fund
Dale Travis Associates, Inc.
Union Camp Corporation

Voith Paper
The Walbridge Fund, Ltd.
Westvaco Foundation
Weyerhaeuser Company Foundation
Xerox Corporation
Yang Family Foundation

President's Club

Alstrom Power Inc.
Asten Johnson
Bartlett Tree Foundation, Inc.
Bond, Schoeneck & King, LLP
Brookside Veneers, Ltd.
Burrows Paper Corporation
C&S Engineers, Inc.
CCPS Inc.
Clariant Corporation
William J. Cox Memorial Fund
Rosamond Gifford Foundation
Hollingsworth & Vose Company
Industrial Pump Service of NC
International Business Machines
Lockheed Martin Corporation
Malcolm Pirnie, Inc.
MPW Industrial Services
OMYA, Inc.
Procter & Gamble
Prudential Timber
QPK Design
R.A. Miller Hardwood Company
John Ben Snow Foundation, Inc.
Sonoco Products Company
Specialty Minerals, Inc.
State Farm Companies Foundation
Stora Enso North America
Syracuse City School District
The Burrows Little Falls Foundation
Tricon Metals & Service
Voith Paper
Walter N. Yoder & Sons Inc
Wyeth
Leader
Ahn Associates
Alloy Cladding Co. Inc.
ATM & E. Communications, Inc.

BASF Corporation
Beitzel Corporation
Boeing Corporation
Carl Belt Inc.
Clough, Harbour & Associates
CM Hall Associates, Inc.
Columbia Corporation
Custom Valve Repair
EKA Chemicals
Emerson Process Management
Equipment & Controls, Inc.
Erco Worldwide
Frischkorn, Inc.
GL&V/IMPSCO-Jones Co.
Hunton & Williams
Metso Automation
Microsoft Corporation
Millennium Inorganic Chemicals
Mosinee Paper Corporation
Northeast Utilities
Paperchine, Inc.
Rockwell Automation
Rohm & Haas
Solvera Controls
Stowe Woodward
The Davey Tree Expert Company
Union Pacific Corporation
Pacesetter
Anheuser-Busch Companies
ExxonMobil Corporation
FMC Corporation
J.P. Morgan & Company, Inc.
Merrill Lynch
The Johnson Corporation
Wachovia
Wausau-Mosinee Paper
Centurion
Aegon USA
Akzo Nobel
Alcoa Corporation
Amerada Hess Corporation
C.D. Spangler Foundation, Inc.
Campbell Soup Company

Community Foundation of New Jersey
Conoco, Inc.
Cooper Industries
Dow Corning Corporation
Equiva Services, LLC
General Electric
Intel Foundation
Johnson Controls Inc.
Kimberly-Clark Corp.
Merck & Co., Inc.
New York State Gas & Electric Corporation
Paper Industry Recruitment
Pfizer, Inc.
Plumcreek Timber Company
Shell Oil Company
Swiss Reinsurance America Corporation
Tate & Lyle North America
The Chubb Corporation
The Prudential Foundation
The Walt Disney Company Foundation
Univar
Verizon
Pioneer
Air Products & Chemicals
American International Group
Becton Dickinson and Company
Consolidated Edison Co.
Constellation Energy Group
Corning, Inc.
Environmental Design & Research P.C.
Hallmark, Inc.
Hewlett-Packard Company
Honeywell International
Monsanto Company
Morgan Stanley
Pearson Education
Pharmacia & Upjohn
Toyota Motor Sales, USA, Inc.

Board of Trustees and Foundation Directors

Founder's Club

Domenico Annese '41
Curtis H. Bauer '50
John D. Marsellus
Nancy A. Mayer '71
Robert M. Sand '50
Walter P. Smith '54

President's Club

Stephen Y. L. Chow
Douglas L. Cotton
George W. Curry
Darlene Kerr
Lowell W. McBurney '85
William L. McGarry Jr.
James P. McKenna '77

Charles B. Morgan
Elizabeth B. Mosher
Cornelius B. Murphy Jr.
Virginia C. Robbins
George J. Schunck
Herbert Seidel '43
John J. Vasselli
Connie S. Webb

Ross S. Whaley
J. Warren Young
Leader
Edward J. Audi
Larry R. Leatherman
Harrison H. Payne '50
Arthur V. Savage

Pacesetter

Jeffrey B. Davis
Peter M. Kapcio
William H. McAvoy
Centurion
Mary W. Clements '82
Daniel T. Fitts '81
Richard E. Garrett '59

Orrin MacMurray
Robert R. Quinn '75
Harold E. Schumm '53
Robert S. Stegemann '80

Friends

Founder's Club

Cathrine C. Baxter
Ann Castagnozzi
Richard D. Greenfield
Paul Haczel
Dale & Vera Johnson
Estate of Helen R. Kennedy
George W. Lee Jr.
Gratia Lowe
John & Candace Marsellus
Marion W. Meyer
Elizabeth H. Naumberg
Claude & Meira Penchina
Burton Perry III
William L. Sammons
Harriet Schwarzer
Henrietta Simeone
Walter Sutton
Ralph & Iris Szwarz
Rina Szwarz
M.J. Van Witsen
Louise Wendel

President's Club

Judith Anderson
Peter W. Bragdon
Janette Burnett
William E. Davis
Albert W. Fowler
India Graves
John Hensel
Julie Higgins
Sheila M. Mackintosh
Christopher B. Martin
Noah Montena

Richard C. & Susan B. Ernst
Brenda Sage
Richard W. Sage Sr.
H. Louise C. Vier
Leader
Dennis Cook
James M. Heffernan
Nancy C. Hrusa
John J. Maroscia
Margaret Z. Thomas
Anthony Van Witsen

Pacesetter

Kelly S. Betters
Peter D. Brickman
Donald W. Edwards
Randolph D. Hamilton
Jan D. Klotz
David R. Kohr
Charles L. Kroll
R. D. Moore Jr.
Peter S. Paine Jr.
Charles L. Rosenthal
John J. Scibetta
Sally E. Sherwood
James T. Townsend

Centurion

Richard Barletta
Kermit E. Becker
Steve Bell
Judith Bergoffen
Charles R. Bosley
Carter B. Chase
Anne C. Coon
Richard H. Dewolf

Michael C. Diehl
L.F. B. Doyle
John R. Duffus
Scott W. Graham
John K. Groetzing
Trent M. Gyory
Lloyd P. Hardman
John M. Heagle
Howard K. Herbert
Tambra Hopkins
Timothy F. Jackson
Robert L. Kidwell
Orville J. Knott
Clifford E. Knotts
John A. Lepley
James E. Lopez
John C. Marini
Ted Mascott
Ramona H. Matthews
Michael L. McDowell
Susan McMahan
Edward Nast, MD
Constance R. Nyman
Christopher J. Paitsel
Peter Pamepinto
Frederick F. Pritts
James B. Rattray
Robert W. Rock
Irma Sawyer
Daniel S. Streets
John R. Tarbox
George Tasker
John M. Thomas
Grace Vredenburgh

Donald R. Wilkinson Jr.
Henry G. Williams
Paul F. Williams
John Young
Pioneer
Ilene Barocas
Louis Barocas
Charles F. Bass
Steven W. Beavers
Richard Becker
Fern R. Butler
Isaac D. Butner
Mary H. Cass
Marion Chester
Lorie Christian
Carol Courtwright
David F. Daniels
Jack Dolan
Marvin Druger
Bruce A. Dubins
Roger N. Fazenbaker
Arthur J. Fritz Jr.
Linda M. Galloway
Michael A. Garlitz
Jennifer Groff
John G. Hamilton
John A. Hetrick
Ronald Holly
Ann S. Hudomint
Scott A. Igoe
John A. Kinnie
Shaun Koontz
Larry G. Layman
Herbert Lepke Jr.

Susan Lieberman
Donald Lohrer
Stanley Lowell
J. D. Mabie
C. C. Moreland
John F. Myers
William T. Natolly
William W. Naugle Jr.
Fredric Neary
Michael Nonni
Georgiana F. Norton
Irene Norton
Paul Peacock
Gail Pedescleaux-Muckle
James Pfuelf
Timothy W. Puffenbarger
William S. Rubin
Dale E. Sams
Marilyn B. Shaffer
William C. Shimer
William B. Smith IV
Helen M. Subbio
Edward H. Thorndike
Eve Tierson-Wool
Bonnie A. Waite
Howard L. Walton
Merrill M. Webb
Phillip C. Whetstone
Phyllis Wilhelm
Woodrow C. Wilson
James R. Zuhlke

Organizations

Founder's Club

ESF Alumni Association
Kappa Phi Delta Fraternity
Undergraduate Student Association

President's Club

Helen R. Brady Charitable Trust
New York Conservation Officers Association
NY Allergy & Asthma Society
Town of Newcomb Golf Tournament Committee

Wellesley College
Women of the University

Leader

NY Library Association Inc
NYFOA - NAC

Pacesetter

ASLA, NY Upstate Chapter
Novartis

Centurion

Air Quality Sciences, Inc.

Pioneer

Brockway Farms Garden Club
Franklinville Central High School
Quality of Worklife Committee
St. Matthew's Episcopal Church

Faculty and Staff

Founder's Club

Maurice M. Alexander '40
Anonymous
William R. Bentley
Carlton W. Dence '47

President's Club

Donald F. Behrend '66
Michael R. Brower
Emanuel J. Carter Jr.
George W. Curry
Arthur R. Eschner '50
Donald L. Ferlow '56
James P. Halligan
Cornelius B. Murphy Jr.
William F. Porter
Norman A. Richards '57
Stephen V. Stehman
Larry W. VanDruff
Connie S. Webb
Ross S. Whaley

Leader

Christine R. Capella-Peters '80
Robert W. Davidson '56
Elizabeth A. Elkins

James M. Hassett
Richard S. Hawks '72
George H. Kyanka
Robert T. LaLonde
Harrison H. Payne '50
Dudley J. Raynal
Robert M. Silverstein
Jeri Lynn Smith
Kenneth J. Tiss '78
Christopher L. Westbrook '73

Pacesetter

Gary E. Colella
Chad P. Dawson '83
M. E. Deming
Danette J. Desimone
Cheryl S. Doble '86
Michael T. Dugan '00
Jo Anne C. Ellis
Mark P. Fennessy
Thomas R. Fletcher
Michael K. Gooden '78
Brenda T. Greenfield
John P. Hassett
Robert D. Hennigan
Mary O. Hooven
Christine A. Langlois
Arthur J. Stipanovic '74

Centurion

Susan E. Anagnost '82
Anonymous
George R. Armstrong '49
Marcia Barber
Brian D. Boothroyd
James E. Coufal '60
Justin F. Culkowski '73
Charlotte L. Demers '86
Theodore S. Dibble
Miklos A. Gratzler
Paul B. Hai '00
Charles A. Hall
Myrna H. Hall '95
Robin E. Hoffman '82
D. S. Keller '96
Robin W. Kimmerer '75
Donald J. Leopold
Frank L. Maraviglia
Raymond Masters
Myron J. Mitchell
John D. Novado
William A. Powell
Kevin J. Reynolds
Anatole Sarko '66
James M. Savage '86
Yongwei Sheng
Lawrence B. Smart

Johannes Smid '57
David L. VanTress '76
John E. View
Robert G. Werner
Julie R. White

Pioneer

Lawrence P. Abrahamson
Douglas C. Allen
Thomas E. Amidon '68
John E. Auwaerter '00
Andrea Baird
Judy A. Barton
Amy L. Bashant '02
Douglas R. Brackett '68
Jerome Brezner
William M. Burry '74
Wilfred A. Cote Jr. '58
Allan P. Drew
Daniel D. Dugan
Claire B. Dunn
George F. Earle
Theodore A. Endreny
Linda A. Fagan '93
John M. Farrell '91
John P. Felleman
Danilo D. Fernando

Teresa E. Frese
David R. Gerber PE '88
James P. Gibbs
Eric J. Greenfield '05
L. P. Herrington
Mark Hill
Venera A. Jouraeva '00
Dianne M. Juchimek
Mary Ann C. Keenan
David J. Kieber
Charles N. Kroll
Diane M. Kuehn '02
Louise W. Loughton
Charles N. Lee '49
Valerie A. Luzadis '97
Robert W. Malmshaimer '86
Richard Mark '50
Gregory McGee '93
Donald G. McLean
Anthony J. Miller '72
Howard C. Miller '41
Susan D. Morgan '70
Barbara L. Nelson
Roger L. Nissen Jr.
Christopher A. Nowak '85

Ralph D. Nyland '58
Janis Petriceks '68
Marian C. Poczobutt '81
Lindi J. Quackenbush '98
Daniel A. Reeder '86
Robert G. Reimann '54
D. Dayton Reuter
Richard A. Schwab '69
Susan L. Senecah
Gail M. Simmons
Leonard A. Smith '72
Ragan A. Squier
Kathleen A. Stribley
Linda C. Tarolli
Tore E. Timell
Hornng-sheng Tu '02
Chun J. Wang
David E. White
Edwin H. White '62
Patricia D. Williams
Ruth D. Yanai

Parents

President's Club

Bill & Carol Dugan

Leader

Robert C. Downs
John A. Thorne

Pacesetter

Brian P. Brady
Terry L. Brown
Thomas A. Davidheiser
John E. Kenderdine Jr.
Walter G. Raza
David H. Sullivan
John L. Tripodi
Chih-Wei Wang
Karen K. Zumwalt

Centurion

Steven R. Alexander
Milton I. Bickle
John J. Blakeney
Dante E. Blatt
Magda Boulos
Rose Bowden
Susan Carnevale
Chad Cohen
Patrick J. Colby
Robert J. Craner
Michael Cubera
Miriam A. Cunha
Arthur De Rise
John F. Dickey
Thomas L. Doody

Paul E. Doxey
Judas H. Estes
Thomas H. Evans
Severin D. Gonnella
Ellen M. Griffin
Tedd Habberfield
Constance Harper
James K. Harris
Marie S. Innocent
Charles Kaczynski
Leonard J. Kaplan
Chao Yu Kung
Thomas G. Kuser
Daniel J. Kwiatkowski
Denis A. Livingston
Robert Macleod
Patricia O. Mitchell
Richard W. Newman
Michael L. Nicoll
John A. Nolan
Sally-Ann Peters
Jeff Rogers
George F. Ruppel Jr.
Cathy K. Ryan
Alan S. Sacerdote
Frederick Saia
Whitney Saunders
Nancy A. Savoy
Thomas E. Smyser
Yvette St. Jacques
James P. Stewart
George E. Stuckey Jr.

Craig D. Thompson
Marie Toscano
Margaret S. Tully
Richard L. Ulrich
Nicholas J. Viscio
William D. Walton
Robert G. Williams
Pioneer
Donald Ackerley
Kathleen M. Adragna
Robin L. Ahrens
Charity I. Akujuo
John S. Alberts
Catherine M. Albunio
Salim M. Almuti
Betty J. Andre
Robert Andreassen
Christina Aracil
Barbara Augstein
Donald R. Baker
Michele R. Baker
Michael F. Barber
Joanne M. Bartolomei
Kathleen M. Bauer
Sylviane S. Baumflek
Gary M. Behms
Mark S. Bellenger
Gail Berben
David Berkery
Philip W. Berler
Robert P. Billings
Anne M. Bishop

James P. Blakely
Denise M. Blass
Laurie J. Blood
Dale A. Blothenburg
Tammy Blume
Mark R. Bocketti
Steven J. Bolton
Susan B. Borchardt
Benjamin A. Boshier Jr.
Tari Botto
Randal O. Bouwens
Barbara J. Brady
Warren Brand
Nancy Bronstein
Margaret K. Brown
Mary R. Brusoe
Nancy L. Bryant
Alan Bumpus
Joseph A. Burns
Edmund M. Cancellare
Richard P. Cargill
Karen A. Carlson
Jacquelyn Case
Beth J. Cash
Gloria P. Caviglia
John K. Chatterton
Margaret A. Chesbro
Richard A. Chetney Sr.
Barbara J. Christ
Paul A. Christman
Augustus J. Cicala Jr.
Donna M. Cieurzynski

Cora K. Clark
David Clark
Dolores Clark
Janice Clark
Stephen L. Cocca
David Coder
Arlene Cody
Carol Cohen
Lynn M. Colletti
John Cologgi
Donna L. Colvin
Patricia Colmartin
Janice W. Coon
Linda Corbett
Clare H. Cornell
R. Craig Cornell
Kathleen W. Costello
Lynn E. Coyne
Andrew W. Crapo
Janet E. Crast
Raymond F. Cronk
John F. Crowley
Eladio Cruz
Ronald L. Culbertson
Gregory O. Custer
Manuel da Silva
Peter S. D'Angelo
Robert C. Darin
Richard D. Dayton
Alan Degracia
Sandra E. Degroat
Douglas G. DeRue

Parents continued

Marsha G. Deuel	Dennis J. Hayes III	Robert W. Manfrida	Gary A. Powers	Donald F. Storm MD
Roy L. Deyo	Michael Hayes	Robert W. Manning	Barbara A. Raab	Mary C. Strang
Robert J. Di Carlo	Susan Herson	Paul P. Marchese	Jean A. Rasmus	Angela P. Stuber
Julie Diefendorf	Dana L. Herrington	J. S. Marcus	Westley H. Reeves	Kaye L. Studdert
Frank B. DiGirolomo	Richard E. Hetey	Samuel Marr	Michael G. Reilly	Evelyn Sullivan
Richard L. Dingman	Mark P. Hettler	Kathleen Marsala	Cynthia Reppel	Mark Suraf
Maurice J. Dionne	Jude Holdsworth	Charles W. Martin Jr.	Albert G. Richard	Richard N. Swanson
Kathleen A. Dixon	Eileen K. Hollembaek	Kathleen M. Martin	Timothy R. Riley	Joseph Szwed
Thomas M. Dodd	Edward E. Holtz	Kimberly Martinez	Michael R. Riposo	Edward Taylor
George Doherty	Evelyn Holz	Martin Martino	Mark E. Robbins	Amy L. Thatcher
Joseph Donigan	Robert J. Howland	Ray S. Mastin	Margaret E. Ronan	George R. Thompson
Edward G. Dooley	McKinnon B. Huggins	James D. McFadden	Elizabeth Rose	Samuel L. Thorndike Jr.
Roma Douglas	Douglas E. Hutson	Brian M. McMillin	Fernando P. Rufa	Edward F. Tidd III
James M. Drake	Frederick C. Ingerson	Thomas E. Mead	Paul C. Russell	Faith Tidd
Bernadette Drumgoole	Frances Innella	Laurie A. Meehan	Vito S. Russo	Phyllis A. Trapani
Marilyn Duggan	James C. Ippolito	Patricia A. Meschino	Kevin Ryan	Mary Tretiak
Paul K. Dukette	Cecelia Jeffrey	Donna J. Meyer	Denise C. Sabattis	Linda Tringali
James T. Dumpert	Jeffrey M. Jenkins	Charles R. Miller	Ann M. Sanger	Roberta Truscello
John M. Dunay	Samuel A. Joy	Craig L. Miller	Kathryn M. Sanzo	Susan J. Tunkey
Jay A. Dunn	Marilyn Kahan	Matthew Miller	Damodaran Sathyamurthy	Mary Ellen Tunskey
William M. Eddy	Marvin Kapus	William F. Millier	Gregory P. Savas	James C. Turner
Eugene L. Edwards	Carol Keener	Diane M. Money	Suzanne L. Scales	Terry C. Ulion
James P. Eisenberg	Tracy Kellogg	John Montalbano	Brad Schoenberg	William C. Van Wormer
Carole Ellsworth	William G. Kerr	Michael C. Moore	James P. Schofield	Todd A. VanAuker
Clare Epworth	Barry C. Kessler	Ronald H. Mucha	Rhonda Scicutella	Elizabeth Veliz
Frederick W. Erlich	David Kessler	Merle Murphy	John A. Scott	Michael Verdile
Miguel Escobar	Donna Kieper	Susan K. Nachtrieb	Pamela C. Scott	Alfonse Visco
Theresa A. Fadden	Daniel King	Linda Nack	George Seeger	Roy F. Viskupic
Rita P. Fischedick	Kevin R. King	Daniel F. Nagle	Richard W. Shappell	Anna Vistocci
Karen S. Fisher	John Kirk	Victor Nelson	Steven J. Sheldon	Cathy A. Wade
Michael A. Fitzgibbons	Margaret A. Klein	Bruce Nevin	Mary G. Sheridan	George Waldenmayer
Paula Fontaine	Joyce Koenig	Doreen Newton	Dennis E. Showers	Kevin M. Walsh
Betsy R. Foote	Kathy Koers	Keith Nicholas	Wendy Sidener	Lisa Walsh
Melissa A. Forbes	Kristopher Konis	Patricia Nichols	Gina Silverstein	Mary Walsh
Don R. Forisha	Tina Kral	Charles L. Norton	Alfred Simeone Jr.	Wayne S. Warner
Paul G. Foster	Raymond Krukovsky	Deborah L. Oliver	Alan Simpson	Gary L. Warren
Linda Fouskaris	Mary C. Lanzafame	Kimberly M. Oliver	Diana L. Simpson	Robert G. Weigand III
John R. Fox	Thomas Larose	John J. Olszewski	Allissa F. Smith	Ronald J. Weiss
Joseph M. Fox	Linda J. Latimer	Stephen J. Pachla	Debra S. Smith	Douglas R. Wernet
Dawn Franits	David G. Leckvarcik	Donna C. Padowski	James R. Smith	Eileen A. Whalen
David M. Freund	Henry Lee	Joseph Pagano	Mary F. Smith	Theodore R. Wiedrich
Ruthel Fung	Ronald Lehrer	Linda Pallack	Richard Smith	Denise C. Williams
Christine Furlong	Richard Leo	Michele Pangburn	Suzanne C. Smith	Linda V. Williams
Donald Gardner	Jeanne Leone	Gregory A. Partch	William F. Smith III	Scott W. Williams
Mary G. Gerhart	Richard G. Liddell	Anthony M. Pastore	Richard R. Snyder	Ernest J. Wiltsie
Paul H. Gerlach	Arthur J. Lipp	Linda A. Paul	Samuel H. Soffler	Richard Winter
Thomas D. Gibbons	Steven Lippold	Susan Peguero	Christine A. Sohm	David T. Wolfson
Roy J. Gilbert	Ilene S. Liszka	Agnes Penque	Arthur O. Soyk	Ronald J. Wolverton
Michael A. Goldsmith	Daniel A. Little	Glenn E. Pezzulo	Barbara Spinosa	Terrance O. Woodburn
Stephen Gomez	Richard Lituchy	Richard E. Piascik	Mary Spitaletta	Jacquelyn A. Woodford
Peter Grace	Jane Lloyd	Michael A. Pichura Jr.	Carolyn G. Stafford	Charles R. Yeskey
William R. Guenther	Brenda Loerzel	Conrad F. Piskorz	George Stergio	Doris R. Young
Ken Hadam	Elizabeth N. Logan	Robert E. Platt	Margaret A. Stevens	Sara E. Young
Linda K. Haffner	Patricia M. Logan	Larry D. Pless	Lisa Stevenson	Stanley L. Zak Jr.
George Hainer	Michael D. Lorenz	Janet L. Plummer	William J. Stilan	
Ellen E. Haley	Mustafa Malkoc	Patricia Portzline	Richard W. Stoddard	

Named Funds

- George J. Albrecht Lecture Fund
Maurice M. & Annette Alexander
Wetland Research Fund
Stuart D. & Cecile T. Alexander
Endowed Fellowship
Allied Paper Sales Associates Endowment
Alumni & Friends Endowment for Pulp
and Paper Science
Domenico & Serafina Annese Fund
Annual Fund Merit Scholarship Program
Baillie Lumber Company Scholarship Fund
Baker Laboratory Equipment Fund
Paul C. Baldwin Endowed Scholarship
Bartlett Tree Foundation Grant-In-Aid
Curtis H. Bauer Scholarship
Herbert R. Baxter Scholarship Fund
Warren Bennett Memorial Fund
Jay & Olive Bentley Scholarship Fund
Olive M. Bentley Ranger School Scholarship
and Chairs Award
John V. Berglund Memorial Forestry
Scholarship Fund
Alfred Green Blake Endowed Scholarship
Blasland Bouck & Lee ESF in the High School
Minority Scholarship/Internship Program
Board of Trustees Fund
Olin & Grace Bockes Fund
Simeon H. Bornt III Memorial Fund
Bristol-Myers Squibb Minority Scholars Program
Kenneth W. Britt Endowed Scholarship
John W. & Elizabeth C. Brooks Fund
H.P. Brown Endowed Scholarship
Henry H. Buckley Endowed Scholarship
Frank & Letitia Buholtz Endowed Scholarship
in Honor of Dr. C. Eugene Farnsworth
Robert L. Burgess Scholarship
Russell F. Burke Memorial Fund
Emanuel J. Carter Jr. Award
Daniel M. Castagnozzi Memorial Fund
Central National-Gottesman Inc.
Endowed Scholarship
Denise M. Cerimeli Memorial Fund
L. Baxter Chamberlain Endowed Scholarship
Betty Moore Chamberlaine Memorial Fund
John & Marie Chamberlaine
Memorial Scholarship
Chemistry Citizenship Award
Chemistry Emeriti Faculty Fellowship
Chemistry Graduate Fellowship
Earl Church Memorial Fund
John P. Clark Memorial Scholarship
1931 Class Fund
Alec C. Proskine '36 Scholarship
1939 Class Fund
1943 Class Fund
1950 Class Fund
1951 Class Fund
Class of 1958 Endowment
Class of 1964 Scholarship
Raymond & Barbara Cline
Silviculture Scholarship
Sandy Cochran Memorial Fund
Dann Colvin Scholarship
College Anniversary Fund
College Memorial Fund
Continuing Education Fund
Daniel Cooke '55 Ranger School Scholarship
Wilfred A. Cote Jr. Endowed
Wood Technology Seminar Fund
William J. Cox Memorial Scholarship
Cranberry Lake Endowment
George B. Creamer Endowed Scholarship
William Cross Memorial Scholarship
Arthur G. & Pearl L. Crysler
Endowed Scholarships
Nicholas DeCandia Endowed Scholarship
Wilford A. Dence Award
Carlton F. Diskin Endowed Scholarship
William J. Donlon Visiting
Professorship in Environmental Science
Aladino Duke Scholarship
George F. Earle Memorial Scholarship Fund
George F. Earle Off-Campus Scholarship
Empire State Paper Sales Associates
Empire State TAPPI Endowed Scholarship
Endowment for Management Education
in Paper Science & Engineering
Charles W. Engelhard, Jr. Endowed Scholarship
Engelhard Corporation Endowed Scholarship
Entrepreneurial Program Endowment
Saul L. Epstein Endowed Scholarship
Faculty of Chemistry Fund
Faculty of Environmental & Forest Biology Fund
Faculty of Forestry Endowment
Faculty of Forestry Fund
Faculty of Landscape Architecture Fund
Faculty of Paper Science & Engineering Fund
Faculty of Wood Products Engineering Fund
C. Eugene Farnsworth Memorial Fellowship
Sol Feinstone Environmental Award
Jean E. Fisher Memorial Fund
Forest Engineering Alumni Scholarship
Forestry Undergraduate Scholarship
Jeremy Frenzel Scholarship for Tropical Ecology
Field Experience
Philip Friedman Memorial Fund
Friends of Moon Library Endowment
Geis Memorial Fund
D. Samuel Gottesman Endowed Scholarship
Christina Lynn Greif Carlson
Endowed Scholarship
Grossman-Southern Container Foundation
Endowed Scholarship
Richard & Patricia Gustafson
Charitable Remainder Unitrust
Gutchess Family Fund
Gary Hamilton '76 Memorial Scholarship
Hammermill Endowed Scholarship Fund
Carmen McCoy-Harrison Memorial Scholarship
Joseph & Ruth Hasenstab Memorial Scholarship
Cyrus Heigl Endowed Scholarship
Janet Hensel Memorial Fund
Hercules, Inc. Endowed Scholarship
Bernard & Rebecca Hirsch Scholarship
R.N. Hoerner Sr., A.J. Hus, & J.H. Myers
Founder's Scholarship
Huntington Renovation Fund
Harold Henry Holden Endowed Scholarship
Minert E. Hull Endowed Scholarship
Mattias C. Huppuch '29 Scholarship
Jack Hutton Scholarship
International Paper Company
Endowed Centennial Scholarship
Edwin C. Jahn Fellowship
James River Corporation Endowed Scholarship
Robert Jelinek Endowed Scholarship
Lancy Jen '51 Endowed Scholarship
Herman L. Joachim Endowed Scholarship
Herman L. & Gertrude Joachim
Endowment Fund
Robert B. Johnson & Class of 1952 Scholarship
William L. Johnson Fund
for the Mapping Sciences
Kappa Phi Delta Scholarship Fund
E. Scott Kasproicz '78 Fund
William Munsey Kennedy Jr.
Distinguished Professor & Scholarship Fund
Ralph T. King Recognition Fund
Friedrich Klaehn Award
Philip L. Knapp Endowed Scholarship
George J. Kneeland Endowed Scholarship
A.E. Komar Charitable Remainder Trust
A. E. Komar Student Aid Fund
Maurice Landberge Endowment
Landscape Architecture Advisory
Council Fund
Landscape Architecture Advisory
Council Scholarship
Gerald N. Lanier Memorial Fund
Albert L. Leaf Memorial Fund
George W. Lee '47 Endowment Fund
Clarence Earl Libby Endowed Scholarship
Littlehales Scholarship Fund
Frank W. Lorey Endowed Scholarship
Julia A. Lorey Memorial Fund
Josiah Lowe & Hugh Wilcox Scholarship Fund
Malcolm G. Lyon Endowed Scholarship
Marsellus Forest Management Fund
Bob Marshall Fund
Renata Marton Endowed Scholarship
Herbert B. McKean '33 Endowment Fund
John A. Meyer Endowed Professorship
John A. Meyer Environmental Chemistry
Scholarship
John A. Meyer Graduate Fellowship
John A. Meyer Wood-Plastic Scholarship
Robert A. Miller Hardwood
Company Scholarship
H. Walter Moeller Fund
Harry Clare Moore Endowed Scholarship
Patricia & Jeffrey Morrell Scholarship
John L. Morrison Scholarship Fund
Edward K. Mullen Endowed Scholarship
News & Publications Fund
New York State/Canadian PIMA
Endowed Scholarship
New York State Conservation Officers
Association Scholarship
New York Forest Owners'
Association Scholarship Fund
O'Brien & Gere ESF in the High School
Minority Scholarship/Internship Program

Named Funds continued

George A. Oechsle Endowed Scholarship
Olin Corporation Endowed Scholarship
Alan W. Oliner Endowed Scholarship
Frederic W. O'Neil Endowed Scholarship
C.L. Pack Endowment
Randolph Green Pack Fund
Paper Chase Endowed Scholarship
Paper Industry Management Association
Endowed Scholarship
Parmalee Pooled Income Fund
Harrison H. Payne Scholarship Fund
Burton E. Perry Jr. Memorial Fund
Jerome & Bertha Prigoff Endowment
Pound Family Charitable Remainder Trust
Pulp and Paper Class of 1938
Endowed Scholarship
Pulp and Paper Class of 1951
Endowed Scholarship
Pulp and Paper Class of 1952
Endowed Scholarship
Pulp and Paper Class of 1954
Endowed Scholarship
Pulp and Paper Class of 1958
Endowed Scholarship
Pulp and Paper Class of 1967
Endowed Scholarship
Pulp and Paper Class of 1971
Endowed Scholarship
Pulp and Paper Class of 1977
Endowed Scholarship
Ranger School Endowment
Ranger School Equipment Fund
Eugene C. Reichard Scholarship
John H. Rich Endowed Scholarship

Carl M. Rise Fellowship in Forest
Products Business
Raymond Rizzo Memorial Scholarship Fund
Robin Hood Oak Gift Plan
Roosevelt Wild Life Station Fund
Phyllis Roskin Memorial Award
Laurence E. Russell Endowed Scholarship
Richard W. Sage Jr. Apprenticeship Fund
Saratoga Associates Fund
Randall J. Schmidt Memorial Fund
Conrad Schuerch Chemistry
Graduate Scholarship
Gary Scott Memorial Fund
Richard B. Scudder Endowed Scholarship
Bradford G. Sears Lecture Fund
75th Anniversary Endowed Scholarship
Walter A. Sherman Undergraduate Scholarship
Hardy L. Shirley Memorial Fund
Joseph C. Shouvlin Endowed Scholarship
Savel B. Silverborg Memorial Scholarship
John & Henrietta Simeone Endowed Scholarship
Sigma Lambda Alpha Scholarship
Carl O. Skoggard Endowed Scholarship
Raymond M. '52 & Rita J. Smith
Scholarship Fund
Society of American Foresters
Bauer/Sand Scholarship Fund
Solvay Paperboard Scholarship
Ernest Sondheimer Fund
John V. Spachner Endowed Scholarship
Joseph S. Spaid, Sr. Fellowship
Leroy C. Stegeman Endowment
in Invertebrate Ecology
Elmer K. Stilbert '39 Fund

Roger and Bertha Strauss Endowed Scholarship
Student Affairs Fund
Student Association Fund
Student Leader Fund
Edna Bailey Sussman Fund
Vivian Ryan Sutton Scholarship
Micharl M. Szwarc Memorial Fellowship
Walter E. Tarbox Memorial Scholarship
Raymond H. Taylor Endowed Scholarship
Louis J. Thaisz Memorial Scholarship
Peter G. Thomson Endowed Scholarship
Thousand Island Biological Station Fund
Sandra C. Trice Endowed Scholarship
Tropical Social Forestry Fund
25th Anniversary Corporate Scholarship
Endowment Fund
25th Anniversary Scholarship Endowment Fund
Union Camp Corporation Endowed Scholarship
Piet Van Witsen Memorial Scholarship
John J. View Memorial Scholarship Fund
Robert F. Vokes Endowed Scholarship
Ira D. Wallach Endowed Scholarship
James G. Wallach & Kenneth L. Wallach
Endowed Scholarship
Richard J. & Lonny Watro Fund
Bill & Helen Webb Huntington
Field Apprenticeship Fund
Beverly Whaley Scholarship
Ross S. Whaley Endowment
Gerald H. Williams Scholarship
Bruce Wright Endowed Scholarship
Robert A. Zabel Endowed Scholarship
Harold F. Zigmund Endowed Scholarship

Contribute to the ESF Annual Fund and We Guarantee You'll Feel Like A Million



SUNY College of Environmental Science and Forestry

2005 - 2006 ANNUAL FUND

FUNDING

THE FUTURE

When you contribute to the ESF Annual Fund, you make an investment that ensures the college will continue to prosper and mature for many years to come.

For more than 30 years, the Annual Fund has provided the support that has helped ESF to develop into a world-class university.

Your gift will continue that tradition. It will help the college build on its rich history and its current successes; not only to be "world class" but to be the best college of the environment in the world.

When ESF succeeds, you succeed. And that will make you feel great.

Office of Development
315-470-6683
www.esf.edu

Seed Money

CHANGE SERVICE REQUESTED



February 20

Accepted Student Reception, Alumni Lounge, Marshall Hall. Also: March 25, April 22. Additional information: Undergraduate Admissions, 1-800-777-7373 or www.esf.edu/admissions/asr.htm

February 24

SUNY Alumni of Atlanta Annual Mid Winter Gathering, Holiday Inn Select Atlanta-Perimeter/Dunwoody, Atlanta, Ga. Additional information: ESF Alumni Office, 315-470-6632 or alumni@esf.edu

February 24

2006 Festival of Places, Alumni Lounge, Marshall Hall. Additional information: Faculty of Landscape Architecture, 315-470-6544.

March 10

Transfer Day at ESF for prospective transfer students, Baker Laboratory Foyer. Additional information: Undergraduate Admissions, 1-800-777-7373 or www.esf.edu/admissions/transferday.htm

March 11

Accepted Graduate Student Reception, Moon Library Conference Room. Additional information: Office of Instruction and Graduate Studies, 315-470-6599 or <http://web.esf.edu/gweb/>

March 15-16

Stormwater Management Program: Design and Implementation of Erosion and Sediment Practices, Alumni Lounge, Marshall Hall, SUNY-ESF. Also: March 28-29, Fishkill, N.Y. Additional information: ESF Outreach, 315-470-6888 or www.esf.edu/outreach/stormwater/

March 16

SUNY Alumni of Florida Gathering, Kissimmee/Orlando, Florida. Additional information: ESF Alumni Office, 315-470-6632 or alumni@esf.edu

March 18

New York City Accepted Student Reception, 1 - 3 p.m., Lubin House, New York City. Additional information: Undergraduate Admissions, 1-800-777-7373 or www.esf.edu/admissions/asr.htm

April 1

Campus Day of Community Service. Additional information: Office of Student Activities, 470-6658.

April 4-6

Remote Sensing Across the Great Lakes: Observations, Monitoring and Action, Clarion Riverside Hotel, Rochester, N.Y. Additional information: ESF Outreach, 315-470-6888 or <http://rdx.glc.org/06>

April 5

SUNY Alumni Reception, Washington, DC. Location to be determined. Additional information: ESF Alumni Office, 315-470-6632 or alumni@esf.edu

April 7

Spring Awards Banquet, Oncenter Complex Convention Center. Additional information: Office of Student Activities, 470-6658.

Farnsworth Lecture, 3:30 - 5 p.m., 140 Baker Laboratory. "The Erosion of Public Space: Acquiring and Allocating Conservation Lands," Dr. Sally Fairfax, Henry J. Vaux Distinguished Professor of Forest Policy, UC-Berkeley. Additional information: Faculty of Forest and Natural Resources Management, 315-470-6536 or www.esf.edu/womenscaucus/speakers.htm

April 9-11

20th Northeastern Recreation Research Symposium, The Sagamore, Bolton Landing, N.Y. Additional information: ESF Outreach, 315-470-6888 or <http://www.esf.edu/nerr/>

April 17-22

Earth Week at ESF. Sponsor: Undergraduate Student Association. Additional information: Office of Student Activities, 470-6658.